

Storage Temperature	: -40°C to +85°C
Enclosure Material	: CRCA-Plated
Finish	: Powder Coating / Paint
Design Corresponding to	: MIL STD 220A, MIL-PRF-15733J, UL1283, IEC60939
MTBF	: >0.8 million hours (calculated using Mil Hdbk 217D)
Insertion Loss Performance	: 100dB from 10KHz to 10GHz
Surge Suppression (optional)	: 40kA (8/20µs)

Ordering Information: 3 Lines

Model Number	Part Number	Model Number	Part Number	Rated Current @50° C (A)	DC Resistance (mΩ)	Maximum Leakage Current (A)	Min. Weight (Kgs)
TMF912-3-6	E106242-1	TMF912S-3-6	E111787-1	6	30	2.5	70
TMF912-3-10	E106250-1	TMF912S-3-10	E111788-1	10	25	2.5	70
TMF912-3-16	E106243-1	TMF912S-3-16	E111789-1	16	25	2.5	70
TMF912-3-20	E106244-1	TMF912S-3-20	E111790-1	20	20	2.5	80
TMF912-3-25	E106245-1	TMF912S-3-25	E111791-1	25	15	2.5	80
TMF912-3-30	E106251-1	TMF912S-3-30	E111792-1	30	15	2.5	80
TMF912-3-32	E106246-1	TMF912S-3-32	E111793-1	32	10	2.5	80
TMF912-3-40	E106247-1	TMF912S-3-40	E111794-1	40	8	5	100
TMF912-3-50	E104203-1	TMF912S-3-50	E111795-1	50	8	5	100
TMF912-3-60	E104207-1	TMF912S-3-60	E111796-1	60	8	5	100
TMF912-3-63	E106248-1	TMF912S-3-63	E111797-1	63	8	5	100
TMF912-3-100	E104211-1	TMF912S-3-100	E111798-1	100	5	7	135
TMF912-3-125	E106249-1	TMF912S-3-125	E111799-1	125	4	9	210
TMF912-3-150	E104215-1	TMF912S-3-150	E111800-1	150	4	9	210
TMF912-3-200	E104219-1	TMF912S-3-200	E111801-1	200	2	9	210
TMF912-3-225	E104223-1	TMF912S-3-225	E111802-1	225	2	9	280
TMF912-3-250	E104227-1	TMF912S-3-250	E111803-1	250	1	9	280
TMF912-3-300	E104231-1	TMF912S-3-300	E111804-1	300	0.5	12	335
TMF912-3-400	E104235-1	TMF912S-3-400	E111805-1	400	0.4	12	335
TMF912-3-600	E104239-1	TMF912S-3-600	E111806-1	600	0.3	12	600
TMF912-3-800	E104243-1	TMF912S-3-800	E111807-1	800	0.2	12	750
TMF912-3-1000	E104247-1	TMF912S-3-1000	E111808-1	1000	0.2	12	750
TMF912-3-1200	E104251-1	TMF912S-3-1200	E111809-1	1200	0.1	12	950
TMF912-3-1600	E104255-1	TMF912S-3-1600	E111810-1	1600	0.06	12	1000
TMF912-3-2000	E108537-1	TMF912S-3-2000	E111811-1	2000	0.06	12	1100
TMF912-3-2500	E108538-1	TMF912S-3-2500	E111812-1	2500	0.06	12	1150
TMF912-3-3000	E108539-1	TMF912S-3-3000	E111813-1	3000	0.04	12	1500

TMF912S – Standard Performance with Surge Suppressor

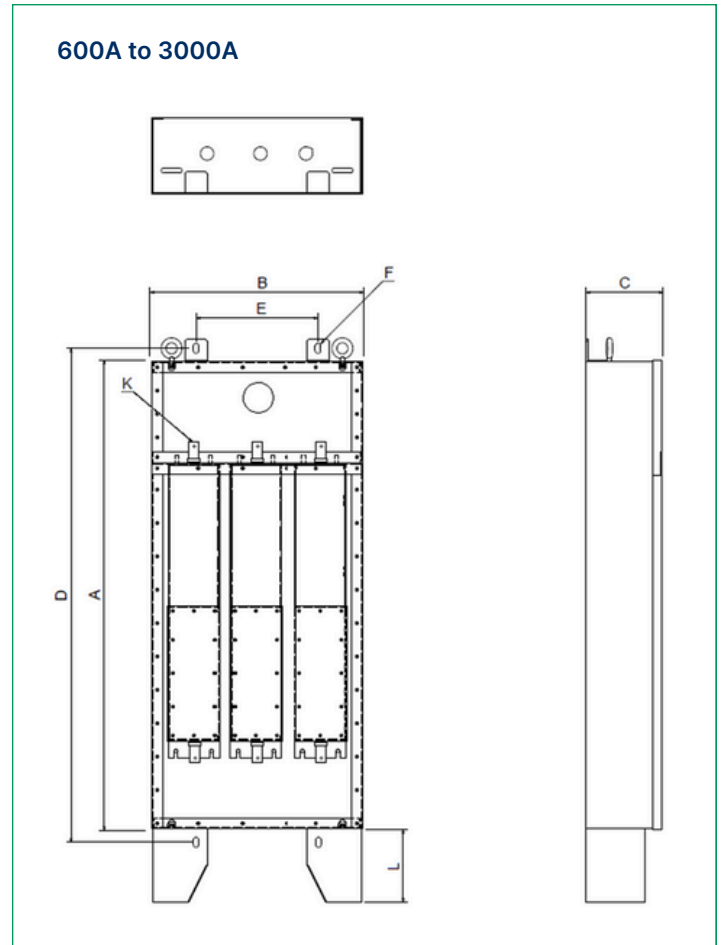
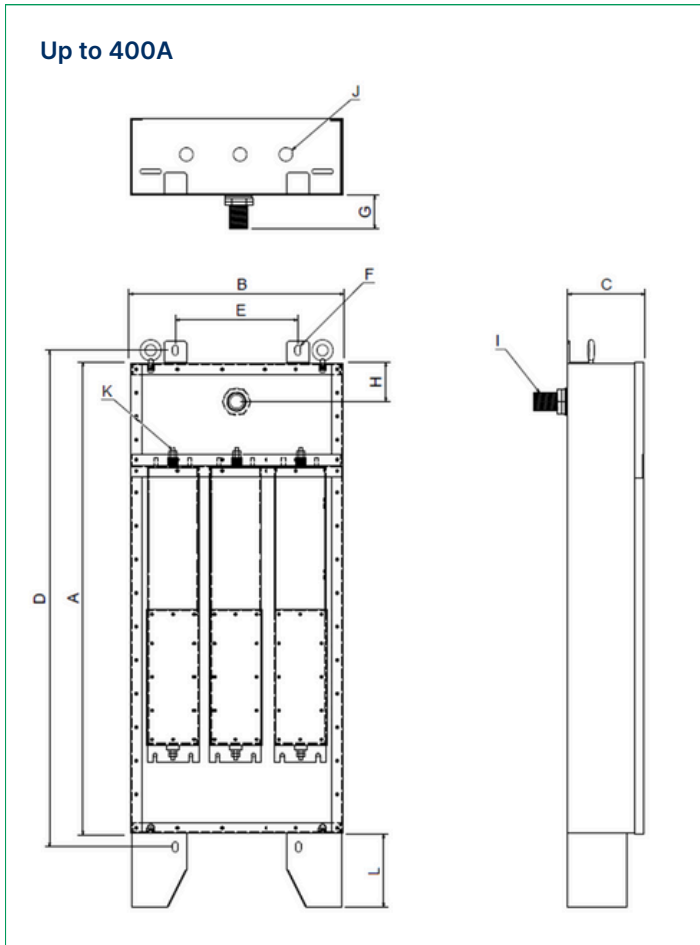
Note: EXXXXXX - Y

- Y - Indicates Enclosure Paint Color
- 1 - Olive Green RAL 6003
- 2 - Light Grey RAL 7035
- 3 - Dark Grey RAL 7046

Note:

1. Earth Leakage Current is measured at 250VAC, 50Hz
2. This Filter series have very high leakage current to the ground, it is recommended to use Earth Leakage Circuit Breaker (ELCB) or Residual Circuit Breaker (RCCB) at the load side of filter
3. Different Enclosure Paint Colors are provided on request

Mechanical Drawing :



Mechanical Dimensions :

Up to 400A

Rated Current (A)	A	B	C	D	E	ØF	G	H	I	J	K	L
6	900	550	160	950	440	Ø13X28	120	80	M32	30	M6	200
10	900	550	160	950	440	Ø13X28	120	80	M32	30	M6	200
16	1000	550	160	1050	440	Ø13X28	120	80	M44	30	M8	200
20	1000	550	160	1050	440	Ø13x28	120	80	M44	30	M8	200
25	1000	550	160	1050	440	Ø13x28	120	80	M44	30	M8	200
30	1000	550	160	1050	440	Ø13x28	120	80	M44	30	M8	200
32	1000	550	160	1050	440	Ø13x28	120	80	M44	30	M8	200
40	1150	550	160	1200	440	Ø13x28	120	80	M44	30	M8	200
50	1150	550	160	1200	440	Ø13x28	120	80	M44	30	M8	200
60	1150	550	160	1200	440	Ø13x28	120	80	M44	30	M8	200
63	1150	550	160	1200	440	Ø13x28	120	80	M44	30	M8	200
100	1350	600	190	1410	480	Ø18x35	150	100	M80	50	M10	250
125	1350	600	190	1410	480	Ø18x35	150	100	M80	50	M10	250
150	1350	600	190	1410	480	Ø18x35	150	100	M80	50	M10	250
200	1550	750	210	1610	600	Ø18x35	150	140	M150	60	M12	300
225	1550	750	210	1610	600	Ø18x35	150	140	M150	60	M12	300
250	1550	750	210	1610	600	Ø18x35	150	140	M150	60	M12	300
300	1900	870	250	1970	700	Ø22x40	150	140	M150	100	M18	400
400	1900	870	250	1970	700	Ø22x40	150	140	M150	100	M18	400

Mechanical Dimensions :

600A to 3000A

Rated Current (A)	A	B	C	D	E	ØF	K	L
600	2100	1100	310	2180	940	Ø22x50	50x8	400
800	2300	1100	310	2380	940	Ø22x50	50x8	400
1000	2300	1100	310	2380	940	Ø22x50	60x10	400
1200	2300	1100	310	2380	940	Ø22x50	80x10	400
1600	2800	1400	380	2900	1120	Ø22x50	125x10	400
2000	2800	1400	380	2900	1120	Ø22x50	125x16	400
2500	3400	1600	430	3520	1300	Ø22x50	127x16	400
3000	3600	1600	430	3720	1300	Ø22x50	130x20	400

All dimensions are in mm;

Note: The output threaded tube or Bulk-head Penetration Pipe along with accessories shall be supplied on request

Ordering Information: 4 Lines

Model Number	Part Number	Model Number	Part Number	Rated Current @50°C (A)	DC Resistance (mΩ)	Maximum Leakage Current (A)	Min. Weight (Kgs)
TMF912-4-6	E106252-1	TMF912S-4-6	E111814-1	6A	30	2.5	90
TMF912-4-10	E104198-1	TMF912S-4-10	E111815-1	10A	25	2.5	90
TMF912-4-16	E106253-1	TMF912S-4-16	E111816-1	16A	25	2.5	90
TMF912-4-20	E106254-1	TMF912S-4-20	E111817-1	20A	20	2.5	100
TMF912-4-25	E106255-1	TMF912S-4-25	E111818-1	25A	15	2.5	100
TMF912-4-30	E106260-1	TMF912S-4-30	E111819-1	30A	15	2.5	100
TMF912-4-32	E106256-1	TMF912S-4-32	E111820-1	32A	10	2.5	100
TMF912-4-40	E106257-1	TMF912S-4-40	E111821-1	40A	8	5	130
TMF912-4-50	E104204-1	TMF912S-4-50	E111822-1	50A	8	5	130
TMF912-4-60	E104208-1	TMF912S-4-60	E111823-1	60A	8	5	130
TMF912-4-63	E106258-1	TMF912S-4-63	E111824-1	63A	8	5	130
TMF912-4-100	E104212-1	TMF912S-4-100	E111825-1	100A	5	7	170
TMF912-4-125	E106259-1	TMF912S-4-125	E111826-1	125A	4	9	270
TMF912-4-150	E104216-1	TMF912S-4-150	E111827-1	150A	4	9	270
TMF912-4-200	E104220-1	TMF912S-4-200	E111828-1	200A	2	9	270
TMF912-4-225	E104224-1	TMF912S-4-225	E111829-1	225A	2	9	360
TMF912-4-250	E104228-1	TMF912S-4-250	E111830-1	250A	1	9	360
TMF912-4-300	E104232-1	TMF912S-4-300	E111831-1	300A	0.5	12	450
TMF912-4-400	E104236-1	TMF912S-4-400	E111832-1	400A	0.4	12	450
TMF912-4-600	E104240-1	TMF912S-4-600	E111833-1	600A	0.3	12	780
TMF912-4-800	E104244-1	TMF912S-4-800	E111834-1	800A	0.2	12	1020
TMF912-4-1000	E104248-1	TMF912S-4-1000	E111835-1	1000A	0.2	12	1020
TMF912-4-1200	E104252-1	TMF912S-4-1200	E111836-1	1200A	0.1	12	1270
TMF912-4-1600	E104256-1	TMF912S-4-1600	E111837-1	1600A	0.06	12	1300
TMF912-4-2000	E108540-1	TMF912S-4-2000	E111838-1	2000A	0.06	12	1480
TMF912-4-2500	E108541-1	TMF912S-4-2500	E111839-1	2500A	0.06	12	1550
TMF912-4-3000	E108542-1	TMF912S-4-3000	E111840-1	3000A	0.04	12	1980

Note: EXXXXX - Y

Y - Indicates Enclosure Paint Color

1 - Olive Green RAL 6003

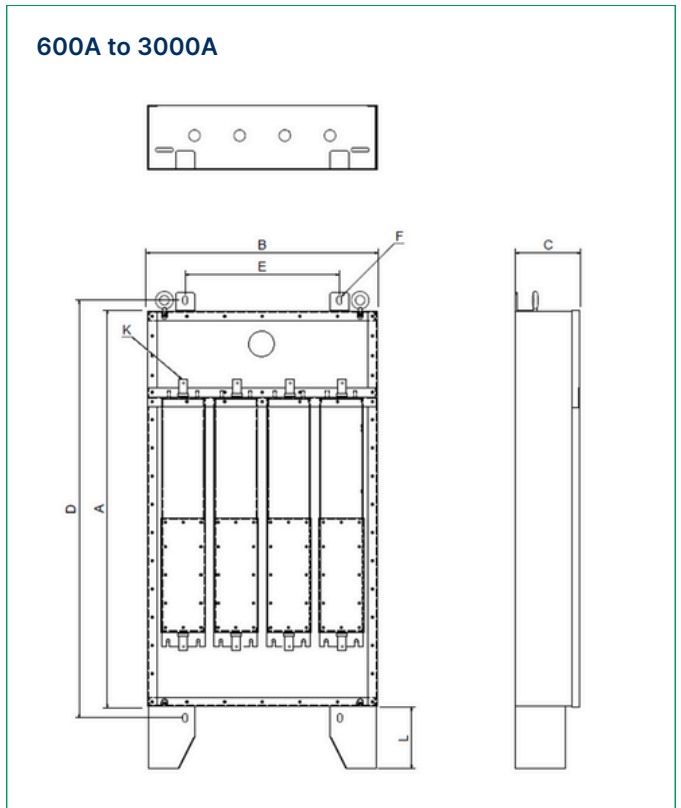
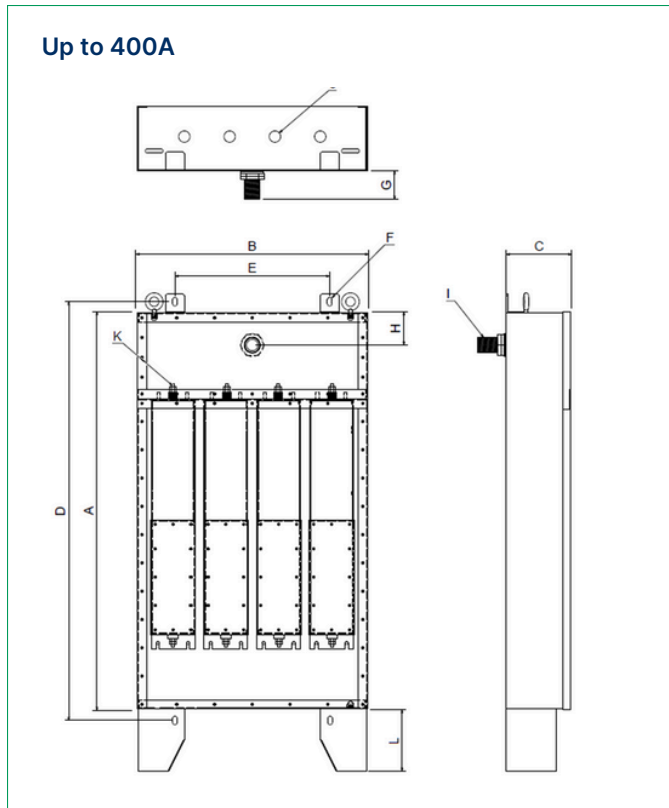
2 - Light Grey RAL 7035

3 - Dark Grey RAL 7046

Note:

1. Earth Leakage Current is measured at 250VAC, 50Hz
2. This Filter series have very high leakage current to the ground, it is recommended to use Earth Leakage Circuit Breaker (ELCB) or Residual Circuit Breaker (RCCB) at the load side of filter
3. Different Enclosure Paint Colors are provided on request

Mechanical Drawing :



Mechanical Dimensions :

Up to 400A

Rated Current (A)	A	B	C	D	E	ØF	G	H	I	J	K	L
6	900	700	160	950	500	Ø13X28	120	80	M32	30	M6	200
10	900	700	160	950	500	Ø13X28	120	80	M32	30	M6	200
16	1000	700	160	1050	500	Ø13X28	120	80	M44	30	M8	200
20	1000	700	160	1050	500	Ø13x28	120	80	M44	30	M8	200
25	1000	700	160	1050	500	Ø13x28	120	80	M44	30	M8	200
30	1000	700	160	1050	500	Ø13x28	120	80	M44	30	M8	200
32	1000	700	160	1050	500	Ø13x28	120	80	M44	30	M8	200
40	1150	700	160	1200	500	Ø13x28	120	80	M44	30	M8	200
50	1150	700	160	1200	500	Ø13x28	120	80	M44	30	M8	200
60	1150	700	160	1200	500	Ø13x28	120	80	M44	30	M8	200
63	1150	700	160	1200	500	Ø13x28	120	80	M44	30	M8	200
100	1350	850	190	1410	700	Ø18x35	150	100	M80	50	M10	250
125	1350	850	190	1410	700	Ø18x35	150	100	M80	50	M10	250
150	1350	850	190	1410	700	Ø18x35	150	100	M80	50	M10	250
200	1550	1050	210	1610	800	Ø18x35	150	140	M150	60	M12	300
225	1550	1050	210	1610	800	Ø18x35	150	140	M150	60	M12	300
250	1550	1050	210	1710	800	Ø18x35	150	140	M150	60	M12	300
300	1900	1200	250	1970	1000	Ø22x40	150	140	M150	100	M18	400
400	1900	1200	250	1970	1000	Ø22x40	150	140	M150	100	M18	400

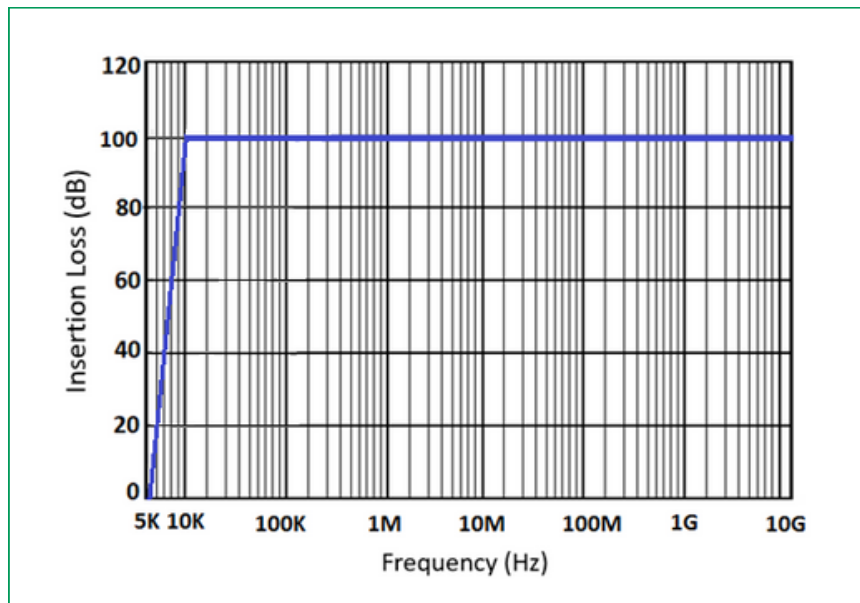
600A to 3000A

Rated Current (A)	A	B	C	D	E	F	K	L
600	2100	1450	310	2180	1200	Ø22x50	50x8	400
800	2300	1450	310	2380	1200	Ø22x50	50x8	400
1000	2300	1450	310	2380	1200	Ø22x50	60x10	400
1200	2300	1450	310	2380	1200	Ø22x50	80x10	400
1600	2800	1900	380	2900	1600	Ø22x50	125x10	400
2000	2800	1900	380	2900	1600	Ø22x50	125x16	400
2500	3400	2200	430	3520	1800	Ø22x50	127x16	400
3000	3600	2200	430	3720	1800	Ø22x50	130x20	400

All dimensions are in mm;

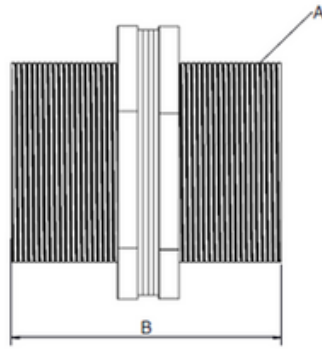
Note: The output threaded tube or Bulk-head Penetration Pipe along with accessories shall be supplied on request

Insertion Loss Graph :



Accessories Details :

Bulk Head Penetration Kit

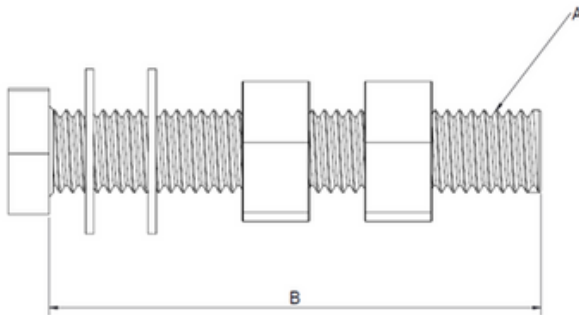


Accessories :

1. Threaded Pipe - 1 No
2. Plain Washer - 2 No's
3. Hex Nut - 2 No's
4. Gasket - 2 No's

SL No.	Part Number	Description	Thread(A) X Length(B)
1	E111914-1	BULKHEAD PENETRATION KIT FOR M20	M20X100
2	E111915-1	BULKHEAD PENETRATION KIT FOR M25	M25X100
3	E111916-1	BULKHEAD PENETRATION KIT FOR M32	M32X100
4	E111917-1	BULKHEAD PENETRATION KIT FOR M40	M40X100
5	E111918-1	BULKHEAD PENETRATION KIT FOR M50	M50X100
6	E111919-1	BULKHEAD PENETRATION KIT FOR M63	M63X100
7	E111920-1	BULKHEAD PENETRATION KIT FOR M75	M75X100

Fixing Screw Kit



Accessories :

1. Bolt - 1 No
2. Plain Washer - 2 No's
3. Hex Nut - 2 No's

SL No.	Part Number	Description	Thread(A) X Length(B)
1	E111921-1	FIXING SCREW KIT FOR M5	M5X40
2	E111922-1	FIXING SCREW KIT FOR M6	M6X40
3	E111923-1	FIXING SCREW KIT FOR M8	M8X50
4	E111924-1	FIXING SCREW KIT FOR M10	M10X50
5	E111925-1	FIXING SCREW KIT FOR M12	M12X60
6	E111926-1	FIXING SCREW KIT FOR M16	M16X60
7	E111927-1	FIXING SCREW KIT FOR M20	M20X70

Note: The suggested Fasteners can be used with a mounting surface thickness up to 20mm