

Maximum Voltage drop per line	: Max 2% @ 240VAC
Short Pulse Common Mode	: 5kA (20ns/500ns-550ns) ≤ 10A
Short Pulse Line to Ground	: 2.5kA (20ns/500ns-550ns) ≤ 10A
Intermediate Pulse Common Mode	: 0.25kA (1.5µs/3ms-5ms) – No Damage
Intermediate Pulse Line to Ground	: 0.25kA (1.5µs/3ms-5ms) – No Damage
Overload Capability	: 140 % of rated current for 15 minutes
Operating Temperature	: -40°C to +50°C
Storage Temperature	: -40°C to +85°C
Enclosure Material	: CRCA-Plated
Finish	: Powder Coating / Paint
Design Corresponding to	: MIL-STD-188-125-1/2, MIL-PRF-15733J
Insertion Loss Performance	: 100dB attenuation from 30MHz to 18GHz then 90dB attenuation up to 40GHz
Peak Surge Current	: 80kA (8/20µs)

Ordering Information: 1 Line

Model Number	Part Number	Rated Current @50°C (A)	Maximum Leakage Current (A)	Min. Weight (Kgs)
SMF914-1-6	E108582-1	6	1.5	18
SMF914-1-10	E111487-1	10	1.5	20
SMF914-1-16	E108583-1	16	1.5	20
SMF914-1-20	E111488-1	20	1.5	35
SMF914-1-25	E111489-1	25	1.5	35
SMF914-1-30	E111490-1	30	1.5	35
SMF914-1-32	E108584-1	32	1.5	35
SMF914-1-40	E111491-1	40	3	35
SMF914-1-50	E111492-1	50	3	35
SMF914-1-60	E111493-1	60	3	35
SMF914-1-63	E108585-1	63	3	35
SMF914-1-100	E108586-1	100	5	40
SMF914-1-125	E111494-1	125	5	45
SMF914-1-150	E108587-1	150	5	45
SMF914-1-200	E108588-1	200	5	50
SMF914-1-225	E111495-1	225	6	60
SMF914-1-250	E111496-1	250	6	60
SMF914-1-300	E108589-1	300	6	60
SMF914-1-400	E108590-1	400	8	60
SMF914-1-500	E108591-1	500	10	100
SMF914-1-600	E108592-1	600	10	110
SMF914-1-700	E108593-1	700	10	130
SMF914-1-800	E108594-1	800	14	140
SMF914-1-1000	E108595-1	1000	14	140

Model Number	Part Number	Rated Current @50°C (A)	Maximum Leakage Current (A)	Min. Weight (Kgs)
SMF914-1-1200	E108596-1	1200	14	150
SMF914-1-1500	E108597-1	1500	14	165
SMF914-1-1600	E111497-1	1600	14	165
SMF914-1-2000	E108598-1	2000	16	180
SMF914-1-2500	E108599-1	2500	16	200
SMF914-1-3000	E108600-1	3000	16	250

Note: EXXXXXX - Y

Y - Indicates Enclosure Paint Color

1 - Olive Green RAL 6003

2 - Light Grey RAL 7035

3 - Dark Grey RAL 7046

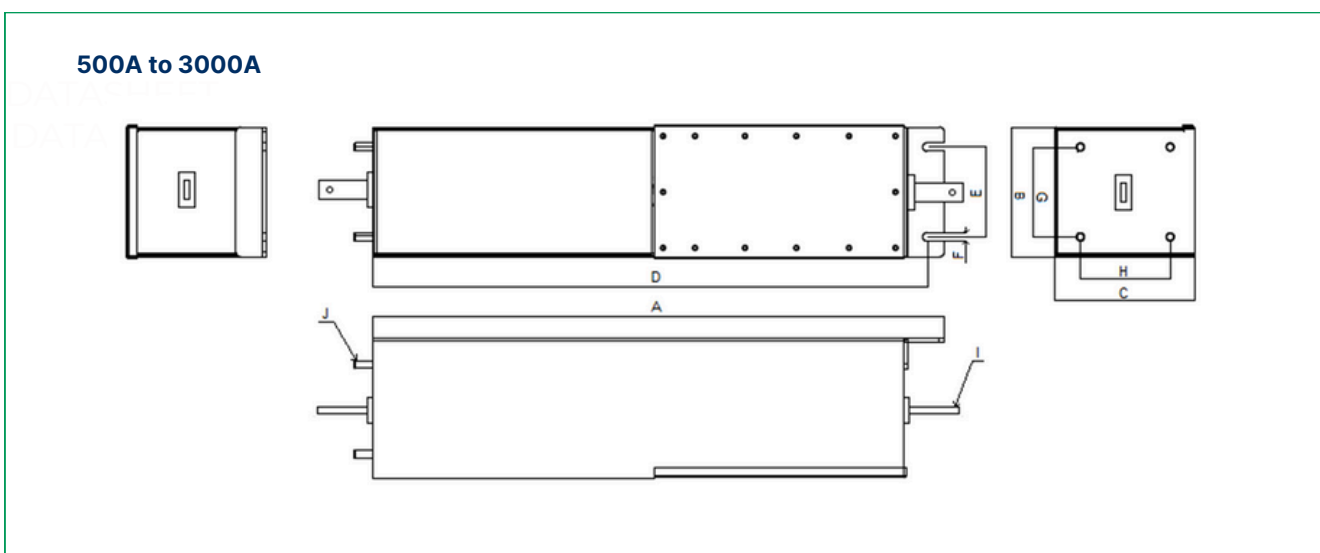
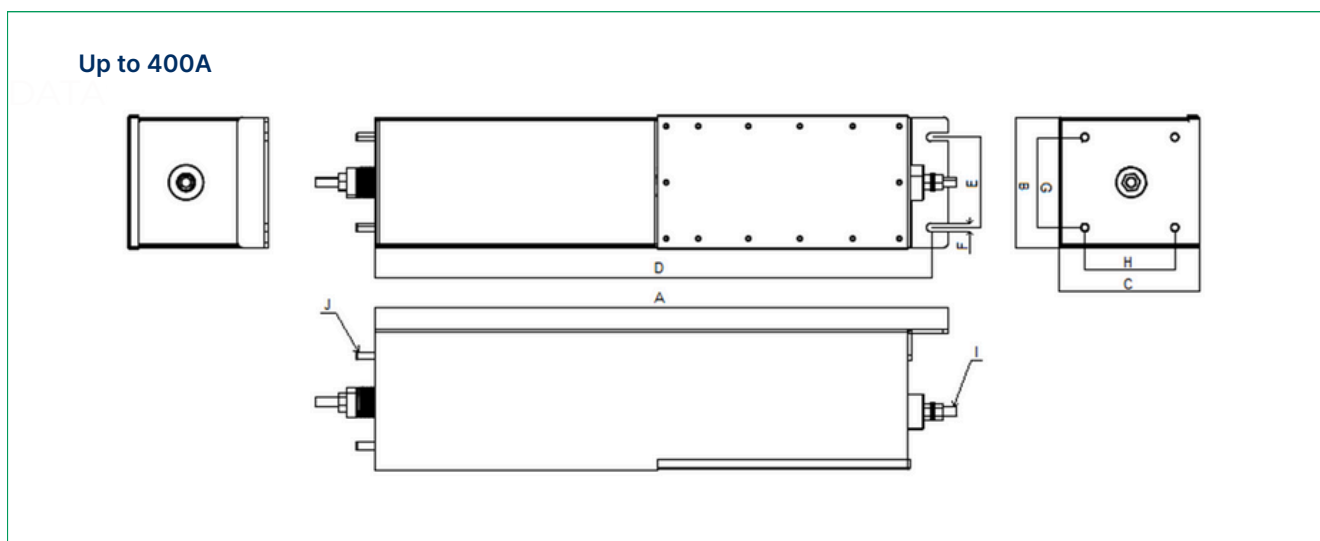
Note:

1. Earth Leakage Current is measured at 250VAC, 50Hz

2. This Filter series have very high leakage current to the ground, it is recommended to use Earth Leakage Circuit Breaker (ELCB) or Residual Circuit Breaker (RCCB) at the load side of filter

3. Different Enclosure Paint Colors are provided on request

Mechanical Drawing :



Mechanical Dimensions :

Up to 400A

Model Number	A	B	C	D	E	ØF	G	H	I	J
SMF914-1-6	700	130	110	685	90	8.5	90	70	M6	M5
SMF914-1-10	700	130	110	685	90	8.5	90	70	M6	M5
SMF914-1-16	800	130	110	785	90	8.5	90	70	M8	M5
SMF914-1-20	800	130	110	785	90	8.5	90	70	M8	M5
SMF914-1-25	800	130	110	785	90	8.5	90	70	M8	M5
SMF914-1-30	800	130	110	785	90	8.5	90	70	M8	M5
SMF914-1-32	800	130	110	785	90	8.5	90	70	M8	M5
SMF914-1-40	950	130	110	930	90	8.5	90	70	M8	M6
SMF914-1-50	950	130	110	930	90	8.5	90	70	M8	M6
SMF914-1-60	950	130	110	930	90	8.5	90	70	M8	M6
SMF914-1-63	950	130	110	930	90	8.5	90	70	M8	M6
SMF914-1-100	1100	160	130	1080	110	8.5	120	90	M10	M8
SMF914-1-125	1100	160	130	1080	110	8.5	120	90	M10	M8
SMF914-1-150	1100	160	130	1080	110	8.5	120	90	M10	M8
SMF914-1-200	1300	200	150	1275	140	11	150	90	M12	M8
SMF914-1-225	1300	200	150	1275	140	11	150	90	M12	M8
SMF914-1-250	1300	200	150	1275	140	11	150	90	M12	M8
SMF914-1-300	1500	240	180	1475	160	13	180	120	M18	M10
SMF914-1-400	1500	240	180	1475	160	13	180	120	M18	M10

500A to 3000A

Model Number	A	B	C	D	E	ØF	G	H	I	J
SMF914-1-500	1600	350	240	1560	200	18	220	160	50x8	M10
SMF914-1-600	1600	350	240	1560	200	18	220	160	50x8	M10
SMF914-1-700	1600	350	240	1560	200	18	220	160	50x8	M10
SMF914-1-800	1750	410	320	1710	200	18	220	160	50x8	M10
SMF914-1-1000	1750	410	320	1710	200	18	220	160	60x10	M10
SMF914-1-1200	1750	410	320	1710	200	18	220	160	80x10	M10
SMF914-1-1500	2100	410	320	2050	280	22	300	200	125x10	M12
SMF914-1-1600	2100	410	320	2050	280	22	300	200	125x10	M12
SMF914-1-2000	2100	410	320	2050	280	22	300	200	125x16	M12
SMF914-1-2500	2600	450	350	2550	340	22	340	260	127x16	M14
SMF914-1-3000	2800	450	350	2750	340	22	340	260	130x20	M14

All dimensions are in mm;

Note: The output threaded tube or Bulk-head Penetration Pipe along with accessories shall be supplied on request

Ordering Information: 2 Lines

Model Number	Part Number	Rated Current @50 °C (A)	Maximum Leakage Current (A)	Min. Weight (Kgs)
SMF914-2-6	E108601-1	6	1.5	50
SMF914-2-10	E111498-1	10	1.5	60
SMF914-2-16	E108602-1	16	1.5	60
SMF914-2-20	E111499-1	20	1.5	80
SMF914-2-25	E111500-1	25	1.5	80
SMF914-2-30	E111501-1	30	1.5	80
SMF914-2-32	E108603-1	32	1.5	80
SMF914-2-40	E111502-1	40	3	80
SMF914-2-50	E111503-1	50	3	80
SMF914-2-60	E111504-1	60	3	80
SMF914-2-63	E108604-1	63	3	80
SMF914-2-100	E108605-1	100	5	90
SMF914-2-125	E111505-1	125	5	100
SMF914-2-150	E108606-1	150	5	100
SMF914-2-200	E108607-1	200	5	120
SMF914-2-225	E111506-1	225	6	140
SMF914-2-250	E111507-1	250	6	140
SMF914-2-300	E108608-1	300	6	140
SMF914-2-400	E108609-1	400	8	140
SMF914-2-500	E108610-1	500	10	240
SMF914-2-600	E108611-1	600	10	250
SMF914-2-700	E108612-1	700	10	280
SMF914-2-800	E108613-1	800	14	300
SMF914-2-1000	E108614-1	1000	14	300
SMF914-2-1200	E108615-1	1200	14	330
SMF914-2-1500	E108616-1	1500	14	360
SMF914-2-1600	E111508-1	1600	14	390
SMF914-2-2000	E108617-1	2000	16	390
SMF914-2-2500	E108618-1	2500	16	440
SMF914-2-3000	E108619-1	3000	16	550

Note: EXXXXXX - Y

Y - Indicates Enclosure Paint Color

1 - Olive Green RAL 6003

2 - Light Grey RAL 7035

3 - Dark Grey RAL 7046

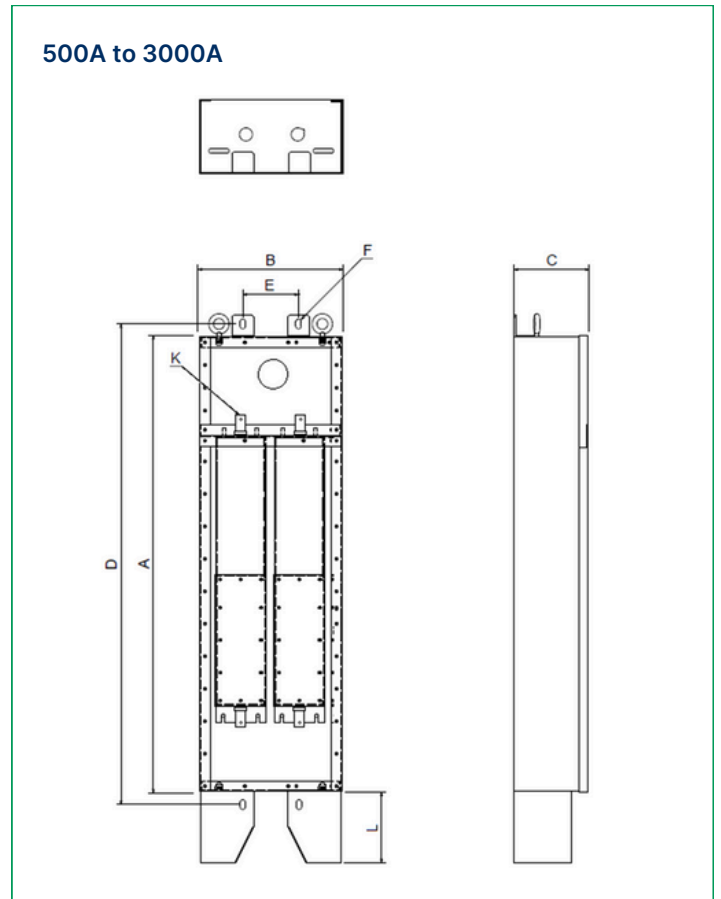
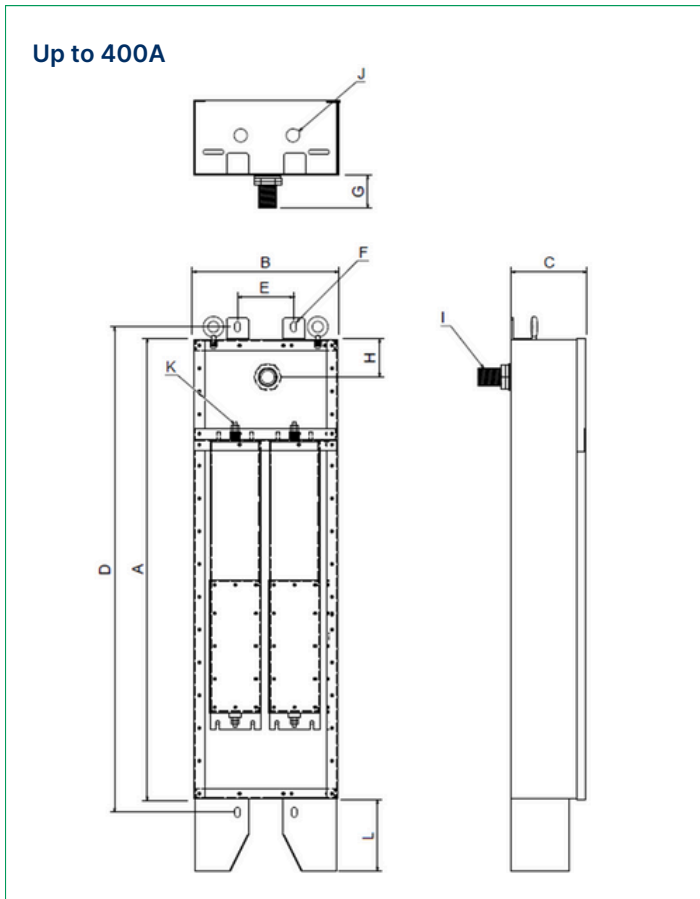
Note:

1. Earth Leakage Current is measured at 250VAC, 50Hz

2. This Filter series have very high leakage current to the ground, it is recommended to use Earth Leakage Circuit Breaker (ELCB) or Residual Circuit Breaker (RCCB) at the load side of filter

3. Different Enclosure Paint Colors are provided on request

Mechanical Drawing :



Mechanical Dimensions :

Up to 400A

Model Number	A	B	C	D	E	ØF	G	H	I	J	K	L
SMF914-2-6	1050	350	160	1100	240	Ø13x28	120	80	M32	30	M6	200
SMF914-2-10	1050	350	160	1100	240	Ø13x28	120	80	M32	30	M6	200
SMF914-2-16	1150	350	160	1200	240	Ø13x28	120	80	M44	30	M8	200
SMF914-2-20	1150	350	160	1200	240	Ø13x28	120	80	M44	30	M8	200
SMF914-2-25	1150	350	160	1200	240	Ø13x28	120	80	M44	30	M8	200
SMF914-2-30	1150	350	160	1200	240	Ø13x28	120	80	M44	30	M8	200
SMF914-2-32	1150	350	160	1200	240	Ø13x28	120	80	M44	30	M8	200
SMF914-2-40	1300	350	160	1350	240	Ø13x28	120	80	M44	30	M8	250
SMF914-2-50	1300	350	160	1350	240	Ø13x28	120	80	M44	30	M8	250
SMF914-2-60	1300	350	160	1350	240	Ø13x28	120	80	M44	30	M8	250
SMF914-2-63	1300	350	160	1350	240	Ø13x28	120	80	M44	30	M8	250
SMF914-2-100	1500	430	190	1560	300	Ø18x35	150	100	M80	50	M10	300
SMF914-2-125	1500	430	190	1560	300	Ø18x35	150	100	M80	50	M10	300
SMF914-2-150	1500	430	190	1560	300	Ø18x35	150	100	M80	50	M10	300
SMF914-2-200	1750	540	210	1810	340	Ø18x35	150	140	M150	60	M12	350
SMF914-2-225	1750	540	210	1810	340	Ø18x35	150	140	M150	60	M12	350
SMF914-2-250	1750	540	210	1810	340	Ø18x35	150	140	M150	60	M12	350
SMF914-2-300	2000	620	250	2070	440	Ø22x40	150	140	M150	100	M18	400
SMF914-2-400	2000	620	250	2070	440	Ø22x40	150	140	M150	100	M18	400

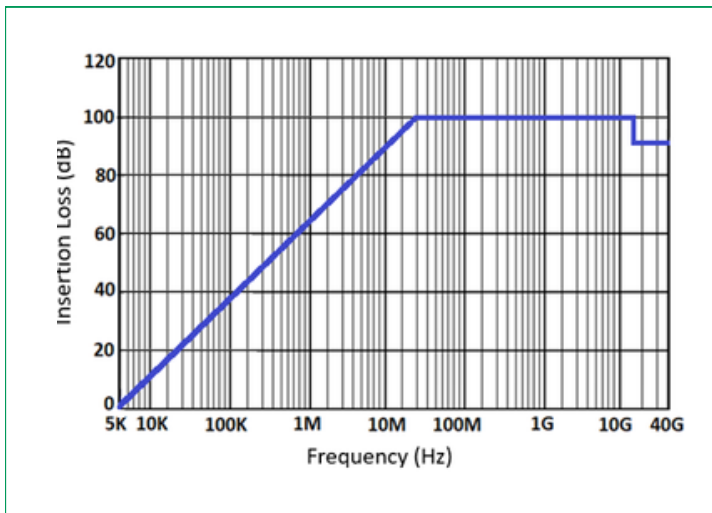
500A to 3000A

Model Number	A	B	C	D	E	ØF	K	L
SMF914-2-500	2350	870	310	2430	600	Ø22x50	50x8	400
SMF914-2-600	2350	870	310	2430	600	Ø22x50	50x8	400
SMF914-2-700	2350	870	310	2430	600	Ø22x50	50x8	400
SMF914-2-800	2550	1000	390	2630	700	Ø22x50	50x8	400
SMF914-2-1000	2550	1000	390	2630	700	Ø22x50	60x10	400
SMF914-2-1200	2550	1000	390	2630	700	Ø22x50	80x10	400
SMF914-2-1500	3000	1000	390	3120	700	Ø22x50	125x10	400
SMF914-2-1600	3000	1000	390	3120	700	Ø22x50	125x10	400
SMF914-2-2000	3000	1000	390	3120	700	Ø22x50	125x16	400
SMF914-2-2500	3500	1100	430	3620	850	Ø22x50	127x16	450
SMF914-2-3000	3700	1100	430	3820	850	Ø22x50	130x20	450

All dimensions are in mm;

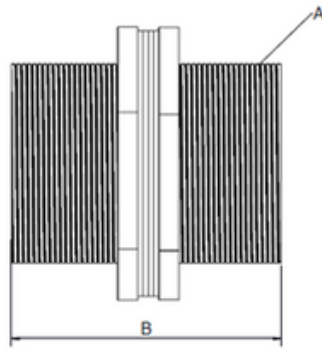
Note: The output threaded tube or Bulk-head Penetration Pipe along with accessories shall be supplied on request

Insertion Loss Graph :



Accessories Details :

Bulk Head Penetration Kit

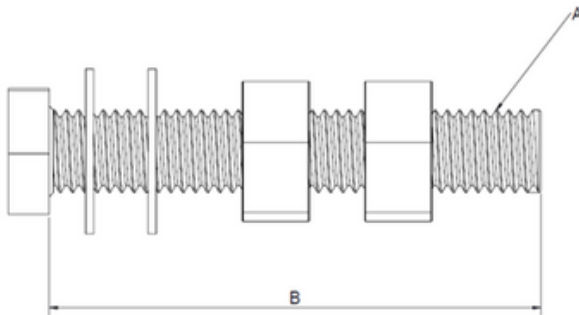


Accessories :

1. Threaded Pipe - 1 No
2. Plain Washer - 2 No's
3. Hex Nut - 2 No's
4. Gasket - 2 No's

SL No.	Part Number	Description	Thread(A) X Length(B)
1	E111914-1	BULKHEAD PENETRATION KIT FOR M20	M20X100
2	E111915-1	BULKHEAD PENETRATION KIT FOR M25	M25X100
3	E111916-1	BULKHEAD PENETRATION KIT FOR M32	M32X100
4	E111917-1	BULKHEAD PENETRATION KIT FOR M40	M40X100
5	E111918-1	BULKHEAD PENETRATION KIT FOR M50	M50X100
6	E111919-1	BULKHEAD PENETRATION KIT FOR M63	M63X100
7	E111920-1	BULKHEAD PENETRATION KIT FOR M75	M75X100

Fixing Screw Kit



Accessories :

1. Bolt - 1 No
2. Plain Washer - 2 No's
3. Hex Nut - 2 No's

SL No.	Part Number	Description	Thread(A) X Length(B)
1	E111921-1	FIXING SCREW KIT FOR M5	M5X40
2	E111922-1	FIXING SCREW KIT FOR M6	M6X40
3	E111923-1	FIXING SCREW KIT FOR M8	M8X50
4	E111924-1	FIXING SCREW KIT FOR M10	M10X50
5	E111925-1	FIXING SCREW KIT FOR M12	M12X60
6	E111926-1	FIXING SCREW KIT FOR M16	M16X60
7	E111927-1	FIXING SCREW KIT FOR M20	M20X70

Note: The suggested Fasteners can be used with a mounting surface thickness up to 20mm