

Features:

- Wide range of capacitance.
- High contact reliability.
- Easy to install.
- High quality and Reliability.
- Corrosion resistant.

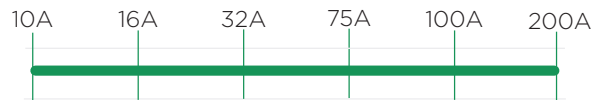
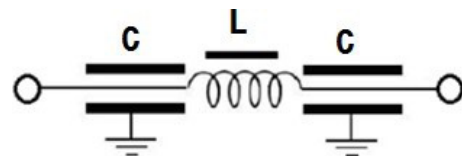
Applications:

- Broadband interference suppression for shielded rooms.
- Telephone exchanges, base stations.
- Electrical machines and systems.
- Power Supplies and MRI Rooms.
- RF power supplies/Switching power supplies.
- Power amplifiers and generators.


DATA SHEET
AC FEEDTHROUGH FILTER
Description

Feed through Filters provide significant Insertion loss over a wide range of frequency up to 1GHz. Construction of Feedthrough Filters results in an excellent performance.

Performance Indicator

Rated current [A]

Typical circuit Diagram

Technical Specifications:

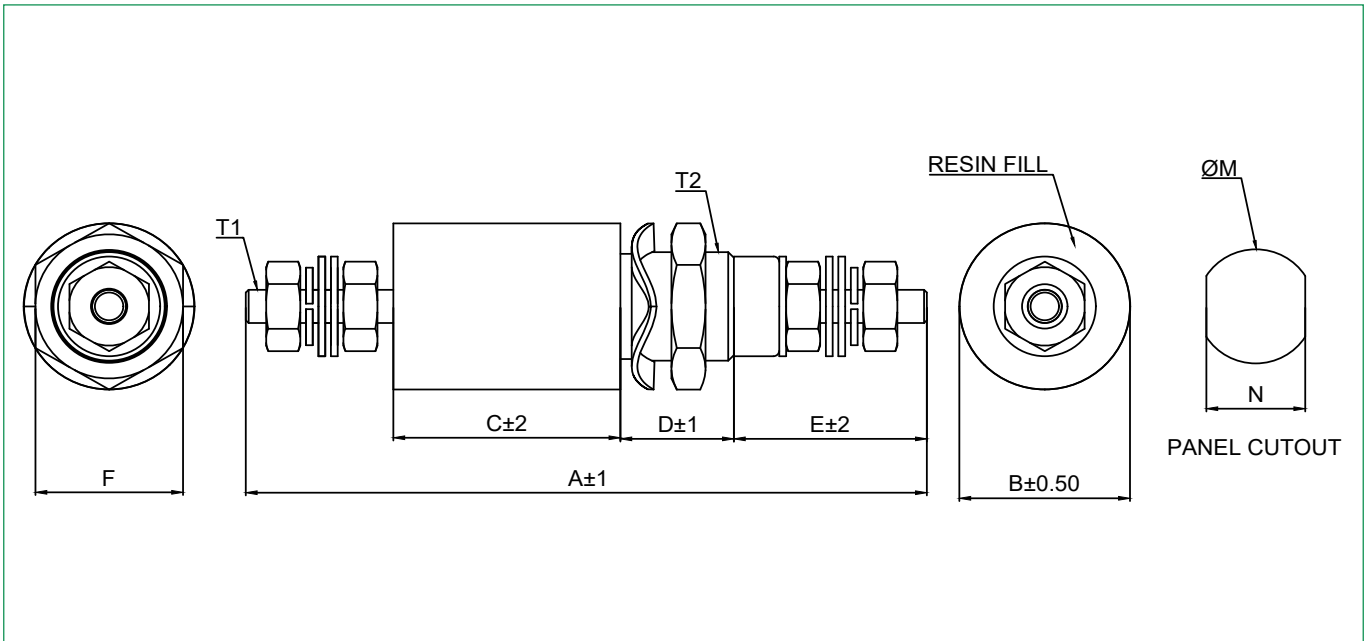
Max. Operating Voltage	: 250VAC/250VDC
Operating Frequency	: 50/60 Hz
Rated Current	: 10A to 200A @60°C
High Potential Test Voltage	: 3000VDC Line to Case For 2 sec
Capacitance Class	: Y2
Design Corresponding to	: UL60939-3
Flammability Corresponding To	: UL 94 V-0 or better
Temperature Range	: -40°C to+100°C (40/100/21)

Ordering Information

Model Number	Part Number	Current Rating @60°C	Leakage Current (mA) @250 VAC/50Hz	Capacitance (nF) ± 20%	A	B	C	D	E	F	T1	T2	M	N	Approx Weight (kg)
FTFAC-0010N-010A	E106685-1	10A	2.0	10	125	25	70	12	24	17	M3	M12	12.3	-	0.5
FTFAC-0022N-016A	E106686-1	16A	4.5	22	130	28	82	14	28	22	M4	M16	16.3	14.3	0.75
FTFAC-0022N-032A	E106687-1	32A			140	28	82	14	30	22	M5	M16	16.3	14.3	0.75
FTFAC-0047N-010A	E106688-1	10A	10.0	47	150	28	86	14	24	22	M3	M16	16.3	14.3	0.75
FTFAC-0100N-016A	E106689-1	16A	20.0	100	150	28	86	14	24	22	M4	M16	16.3	14.3	0.75
FTFAC-0100N-032A	E106690-1	32A			150	32	90	14	28	22	M5	M16	16.3	14.3	1
FTFAC-0100N-075A	E106691-1	75A			200	38	110	16	37	27	M8	M20	20.3	18.3	1.5
FTFAC-0150N-063A	E109822-1	63A	30.0	150	185	38	110	16	32	27	M6	M20	20.3	18.3	1.5
FTFAC-0470N-010A	E110090-1	10A	90.0	470	210	32	150	14	23	22	M3	M16	16.3	14.3	1.5
FTFAC-0470N-016A	E110091-1	16A			210	38	150	14	24	24	M4	M16	16.3	14.3	1.5
FTFAC-0470N-025A	E106692-1	25A			220	38	160	14	27	24	M5	M16	16.3	14.3	2.5
FTFAC-0470N-032A	E110092-1	32A			240	38	170	14	27	24	M5	M16	16.3	14.3	2.5
FTFAC-0470N-063A	E106693-1	63A			245	38	170	14	33	24	M6	M16	16.3	14.3	2.5
FTFAC-0470N-075A	E106694-1	75A			258	38	170	16	37	27	M8	M20	20.3	18.3	2.5
FTFAC-0470N-100A	E106695-1	100A			258	38	170	16	37	27	M8	M20	20.3	18.3	2.5
FTFAC-0470N-200A	E106696-1	200A			275	57	180	19	45	40	M10	M24	24.3	22.3	4.5
FTFAC-1000N-010A	E110093-1	10A	190.0	1000	210	38	150	14	27	24	M3	M16	16.3	14.3	2.5
FTFAC-1000N-016A	E110094-1	16A			210	38	150	14	27	24	M4	M16	16.3	14.3	2.5
FTFAC-1000N-025A	E106700-1	25A			220	38	160	14	27	24	M5	M16	16.3	14.3	2.5
FTFAC-1000N-032A	E110095-1	32A			240	38	170	14	30	24	M5	M16	16.3	14.3	2.5
FTFAC-1000N-063A	E106701-1	63A			245	57	170	16	33	27	M6	M20	20.3	18.3	4.5
FTFAC-1000N-075A	E106702-1	75A			258	57	170	19	37	40	M8	M24	24.3	22.3	4.5
FTFAC-1000N-100A	E106703-1	100A			258	57	170	19	37	40	M8	M24	24.3	22.3	4.5
FTFAC-1000N-200A	E106704-1	200A			275	57	180	19	45	40	M10	M24	24.3	22.3	4.5
FTFAC-2200N-010A	E110096-1	10A	420.0	2200	210	38	150	14	22	24	M3	M16	16.3	14.3	2.5
FTFAC-2200N-016A	E110097-1	16A			210	38	150	14	22	24	M4	M16	16.3	14.3	2.5
FTFAC-2200N-032A	E110098-1	32A			240	57	170	14	24	24	M5	M16	16.3	14.3	4.5
FTFAC-2200N-063A	E106708-1	63A			245	57	170	16	33	27	M6	M20	20.3	18.3	4.5
FTFAC-2200N-075A	E109823-1	75A			258	57	170	19	37	40	M8	M24	24.3	22.3	4.5
FTFAC-2200N-100A	E106709-1	100A			258	57	170	19	37	40	M8	M24	24.3	22.3	4.5
FTFAC-2200N-200A	E106710-1	200A			275	57	180	19	45	40	M10	M24	24.3	22.3	4.5
FTFAC-3300N-010A	E110099-1	10A	630.0	3300	216	57	160	14	22	24	M3	M16	16.3	14.3	4.5
FTFAC-3300N-016A	E110100-1	16A			220	57	160	14	22	24	M4	M16	16.3	14.3	4.5
FTFAC-3300N-032A	E110101-1	32A			240	57	170	14	30	24	M5	M16	16.3	14.3	4.5
FTFAC-3300N-063A	E110102-1	63A			245	57	170	16	33	27	M6	M20	20.3	18.3	4.5
FTFAC-3300N-100A	E110103-1	100A			258	57	170	19	37	40	M8	M24	24.3	22.3	4.5
FTFAC-3300N-200A	E110104-1	200A			275	57	180	19	45	40	M8	M24	24.3	22.3	4.5
FTFAC-4700N-063A	E106714-1	63A	890.0	4700	245	57	170	16	33	27	M6	M20	20.3	18.3	4.5
FTFAC-4700N-100A	E106715-1	100A			258	57	170	19	37	40	M8	M24	24.3	22.3	4.5
FTFAC-4700N-200A	E106716-1	200A			275	57	180	19	45	40	M10	M24	24.3	22.3	4.5

All dimensions are in mm.

Mechanical Drawing:



Typical Insertion Loss (At 50Ω)

Capacitance(nF)	Frequency (Hz)	0.03M	0.1M	1M	10M	100M	1G
10	Attenuation in dB	-	-	3	21	45	70
22		-	-	6	25	45	70
47		-	2	15	34	50	80
100		2	5	20	40	65	80
150		2	5	20	40	65	80
470		9	16	33	33	80	80
1000		15	22	40	42	80	80
2200		18	25	42	45	80	80
3300		20	28	45	48	80	80
4700		38	40	52	57	85	90

Torque Details

	M3	M4	M5	M6	M8	M10	M10X1	M12X1	M16X1	M20X1	M24X1
Terminal thread	0.5Nm	1.2Nm	1.8Nm	3Nm	6Nm	10Nm	----	----	----	----	----
Mounting thread	----	----	----	----	----	----	10Nm	14Nm	25Nm	36Nm	50Nm