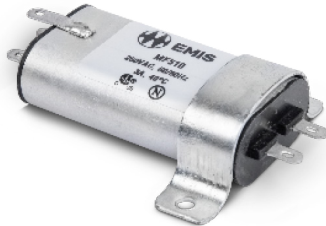
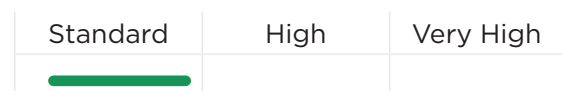


**Features:**

- Excellent performance/size ratio
- Rated currents up to 6 A
- Medical versions available

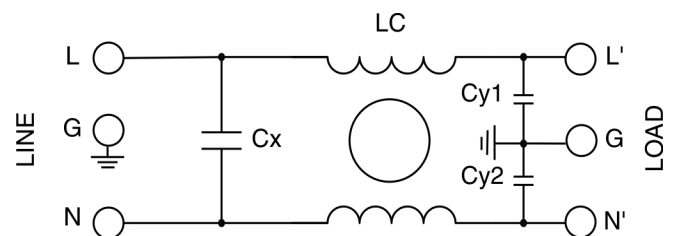
**Applications:**

- Printers
- Monitors
- Electric test instruments


**DATA SHEET**
**SINGLE PHASE EMI FILTER – MF510**
**Performance Indicator**

**Rated current [A]**

**Description**

Filter with additional differential mode rejection in low frequency. For use with switched mode power supplies to reduce noise from power supply back into the mains. Filter also provides good attenuation of incoming interference.

**Typical circuit Diagram**

**Technical Specifications:**

Maximum Continuous Operating Voltage : 250VAC, 50/60Hz(UL Approval)  
250VDC

Operating Frequency : DC to 400Hz

Current ratings : 1A to 6A @40°C

High Potential test voltage : L to G 2250Vdc for 1 Minute  
L to L 1450Vdc for 1 Minute

Overload Capability : 135% of Rated current for 15 minutes

Design Corresponding to : UL1283, CSA 22.2 No.8-13 and IEC 60939

Flammability corresponding to : UL 94 V-0

Temperature range : -25°C to +85°C

Climatic Category : 25/85/21

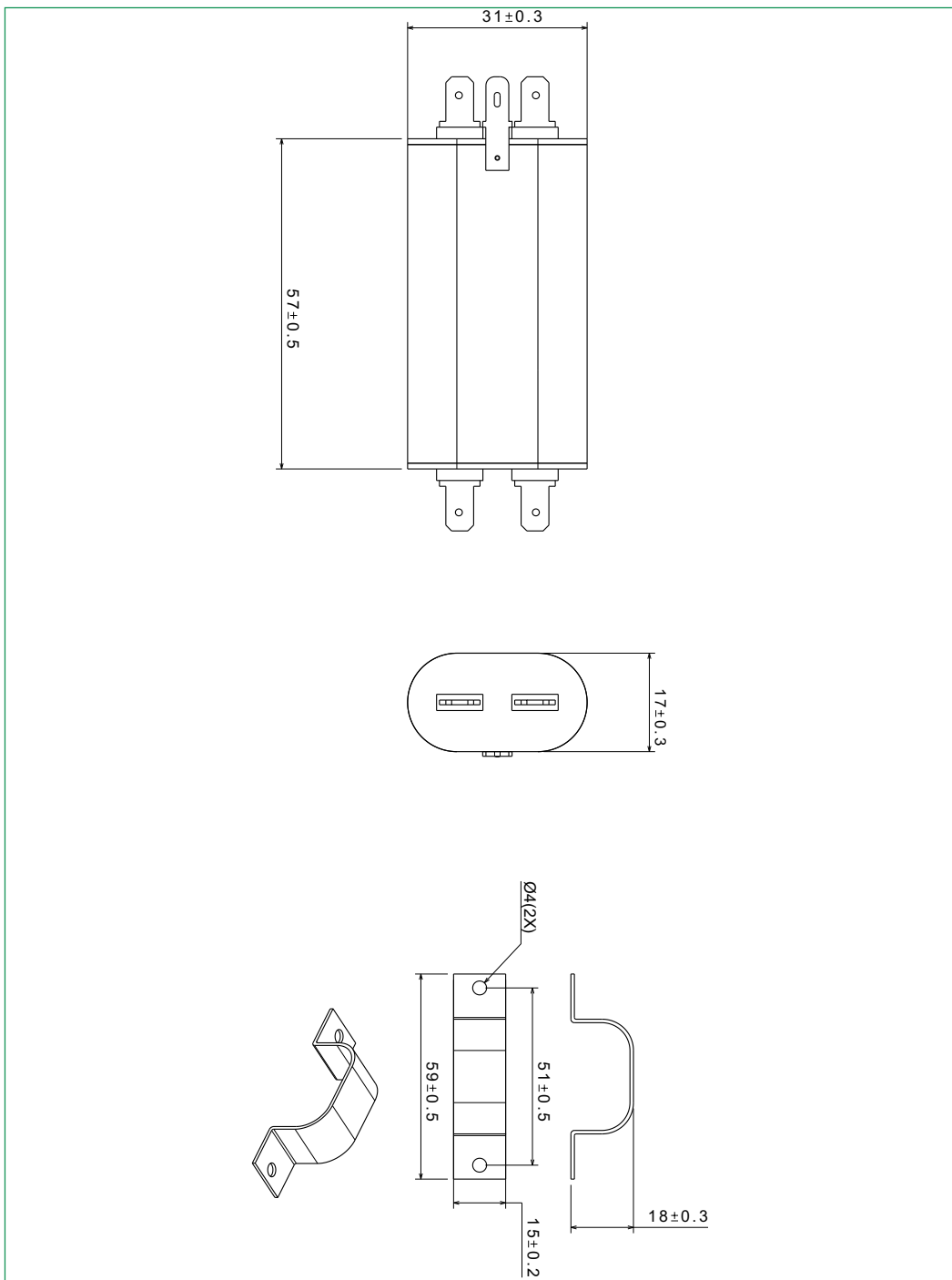
## Ordering Information

Model Number	Part Number	Rated Current @40°C	Leakage Current @250VAC (mA)	Termination	Weight (Grams)
MF 510-01	E100055-2	1A	0.34	2.3 Fastons	60
MF 510-02	E100055-3	2A*	0.34	2.3 Fastons	60
MF 510-03	E100055-4	3A	0.34	2.3 Fastons	60
MF 510-04	E100055-5	6A	0.34	2.3 Fastons	60

Note : \*not covered under NEMKO

## Mechanical Drawing:

### 1A to 6A

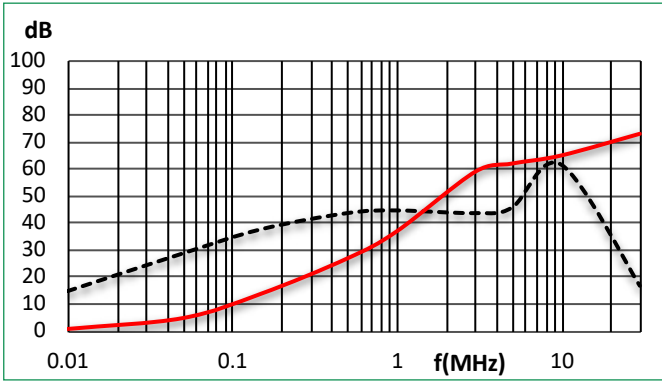


Note: All dimensions in mm; Tolerances according to ISO2768-C

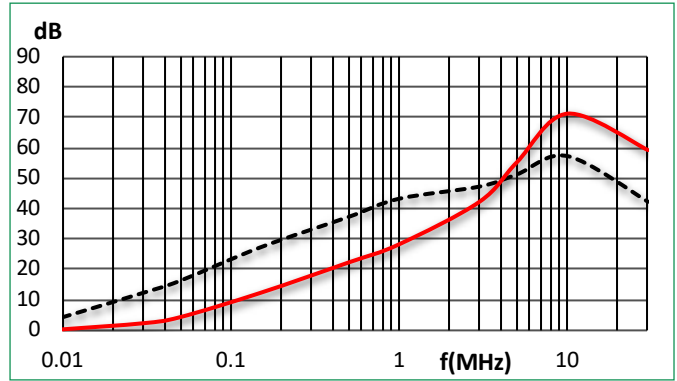
Insertion Loss : ..... Common mode \_\_\_\_\_ Differential Mode

Per CISPR 17; DM=50/50 sym; CM=50/50 asym

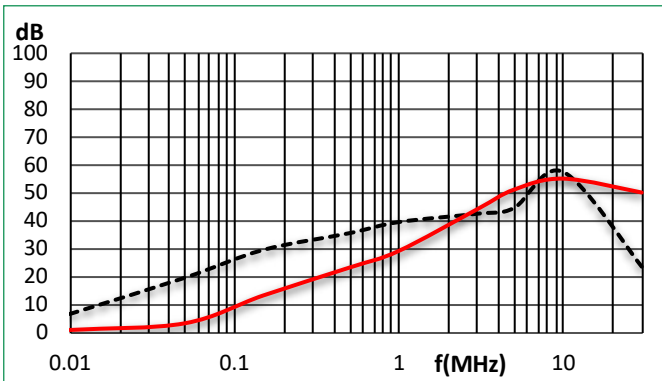
1A



2A



3A



6A

