


Features:

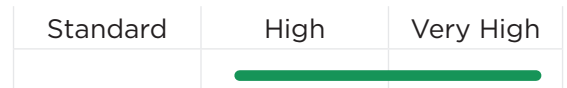
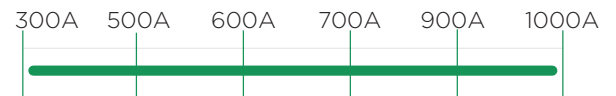
- 3 General Purpose
- High Current rating
- Superior Performance
- Bus bar Terminals
- Available with protective Cover

Applications:

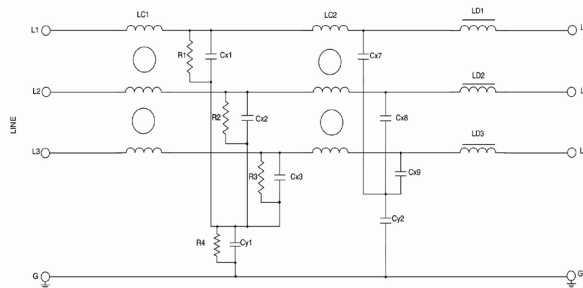
- CNC Machines
- AC/DC Drives
- Convertors
- Elevators
- HVAC

DATA SHEET
THREE PHASE EMI FILTER - MF423 3 3D BB
Description

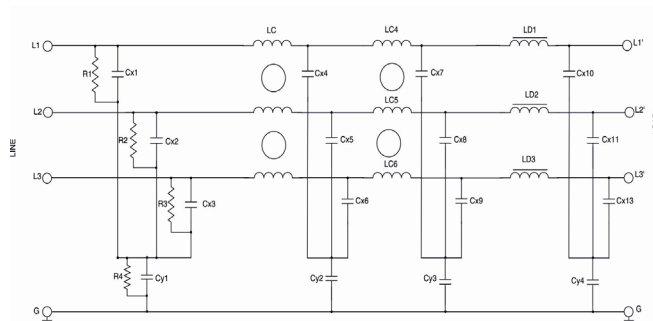
These series range of dual stage three phase high performance filters with book shelf design is designed for motor drive applications requiring minimum space and convenient installation with superior performance at significant interference levels.

Performance Indicator

Rated current [A]

Typical circuit Diagram

300A-600A




700A-1000A



Technical Specifications:

Maximum Continuous Operating Voltage	: 440/520VAC
Operating Frequency	: 50/60 Hz
Current ratings	: 300A to 1000A @ 40°C
High Potential test voltage	: L to G 2660Vdc for 1 Minute L to L 1950Vdc for 1 Minute
Overload Capability	: 135% of Rated current for 15 minutes
Design Corresponding to	: UL 60939-3, CSA 22.2 No.8-13 and IEC60939-1&2
Flammability corresponding to	: UL 94 V-0
Temperature range	: -25°C to +85°C
Climatic Category	: 25/85/21

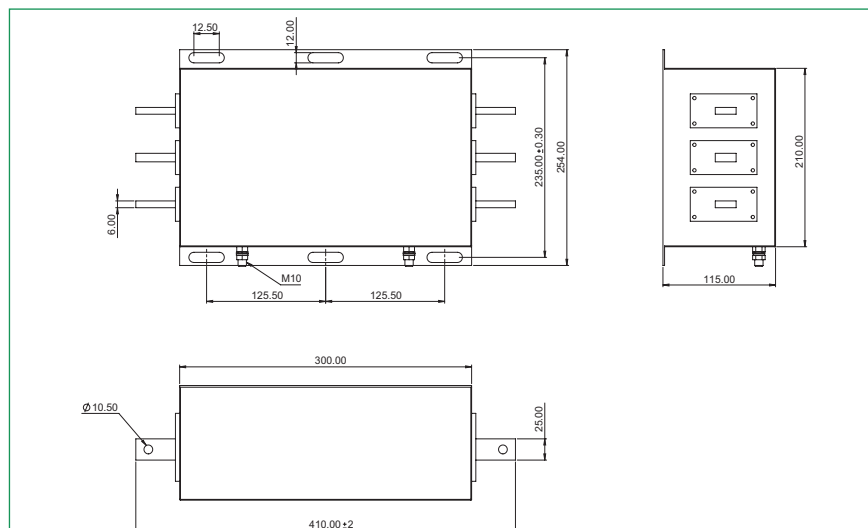
Ordering Information

Model Number	Part Number (for 440VAC)	Part Number (for 520VAC)	Rated Current @40°C	Leakage current (m A)	Termination 	Weight (Kg)
MF 423 3 3D BB	E100102-2	E101897-2	300A	80	25x6	13
MF 423 3 3D BB	E100102-3	E101897-3	320A	80	25x6	13
MF 423 3 3D BB	E100102-4	E101897-4	400A	80	25x6	14
MF 423 3 3D BB	E100102-5	E101897-5	450A	80	25x6	14
MF 423 3 3D BB	E100102-6	E101897-6	500A	80	25x10	15
MF 423 3 3D BB	E100102-7	E101897-7	550A	80	25x10	15
MF 423 3 3D BB	E100102-8	E101897-8	600A	80	25x10	16
MF 423 3 3D BB	E100102-9	E101897-9	700A	80	40x10	28
MF 423 3 3D BB	E100102-10	E101897-10	800A	80	40x10	28
MF 423 3 3D BB	E100102-11	E101897-11	1000A	80	40x10	28

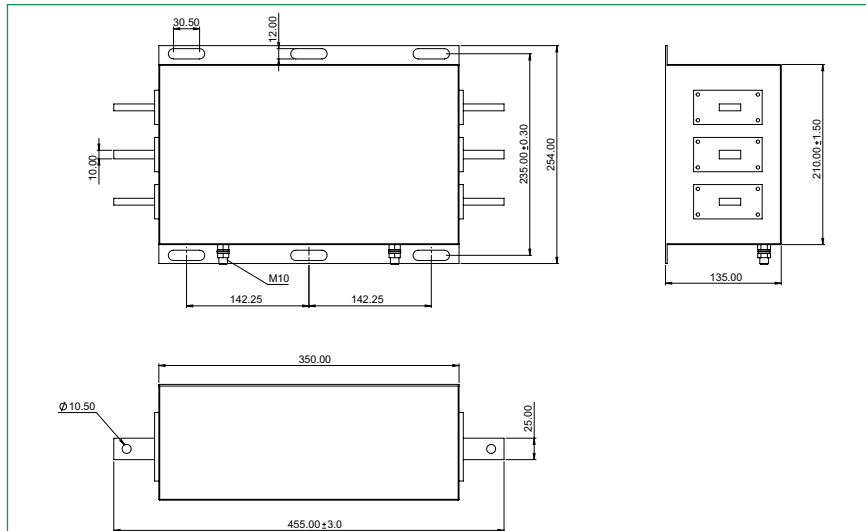
Filters with 520VAC are not covered under NEMKO.

Mechanical Drawing:

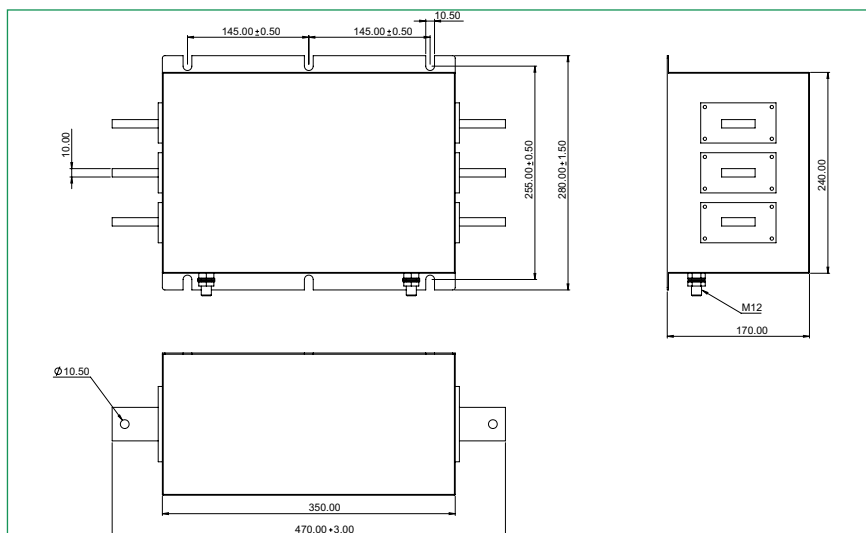
300A-450A



500A-600A



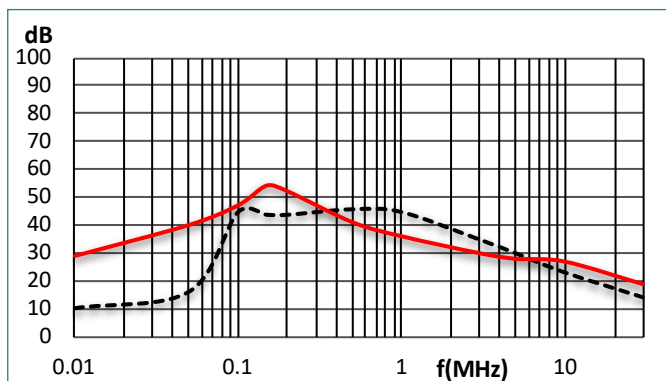
700A-1000A



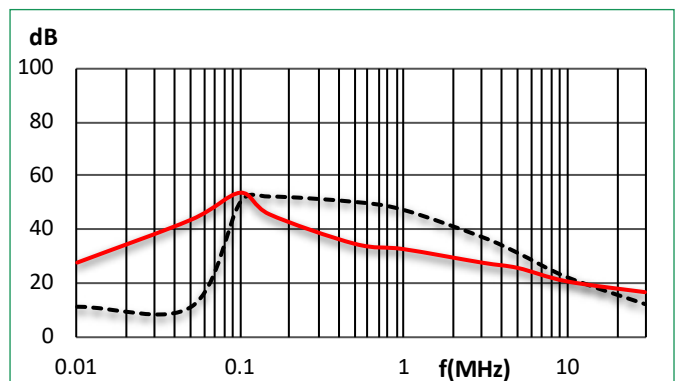
All dimensions in mm; Tolerances according to ISO2768-C

Insertion Loss : Common mode _____ Differential Mode
Per CISPR 17; DM=50/50 sym; CM=50/50 asym

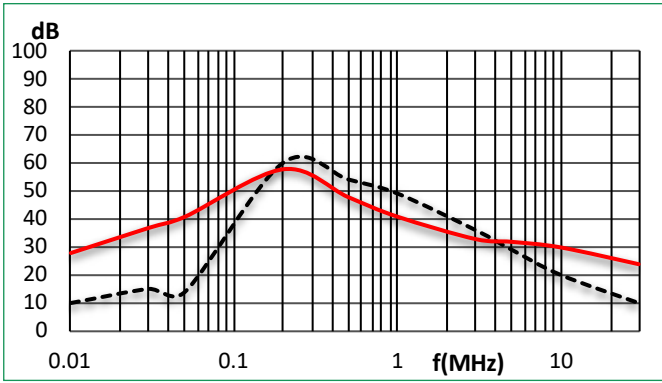
300A



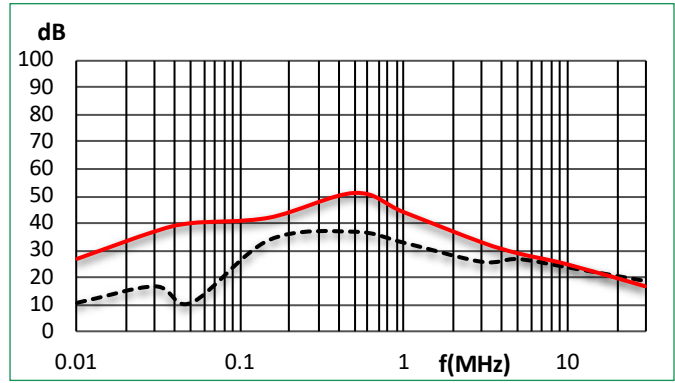
400A



550A



600A



1000A

