

Features:

- Good attenuation performance/size ratio
- Rated currents up to 16 A
- Medical versions available

Applications:

- Washing Machines
- Refrigerator
- Air Conditioner
- Microwave Equipment
- Office Automation Equipment
- Photocopier
- Printers


DATA SHEET
SINGLE PHASE EMI FILTER - MF210-P
Description

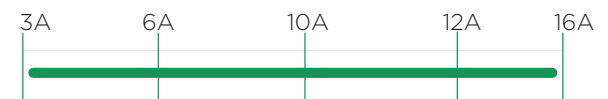
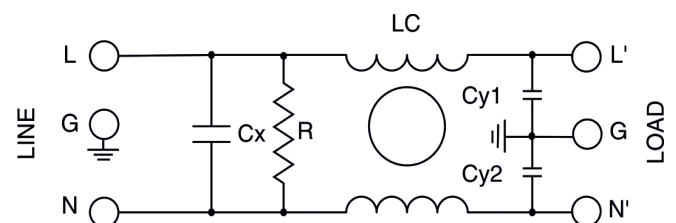
These series range of filters in cylindrical type Plastic enclosure are designed to suppress undesirable electrical disturbances in Power Lines. They limit the amplitude of interfering voltages on AC power lines and prevent them from propagating into or out of the filtered equipment.

Technical Specifications:

Maximum Continuous Operating Voltage	: 250VAC, 50/60Hz
Operating Frequency	: DC to 400Hz
Current ratings	: 3A to 16A @40°C
High Potential test voltage	: L to G 2250Vdc for 1 Minute L to L 1450Vdc for 1 Minute
Overload Capability	: 135% of Rated current for 15 minutes
Design Corresponding to	: CSA 22.2 No.8-13
Flammability corresponding to	: UL 94 V-0
Temperature range	: -25°C to +85°C
Climatic Category	: 25/85/21

Performance Indicator

Standard	High	Very High
█		

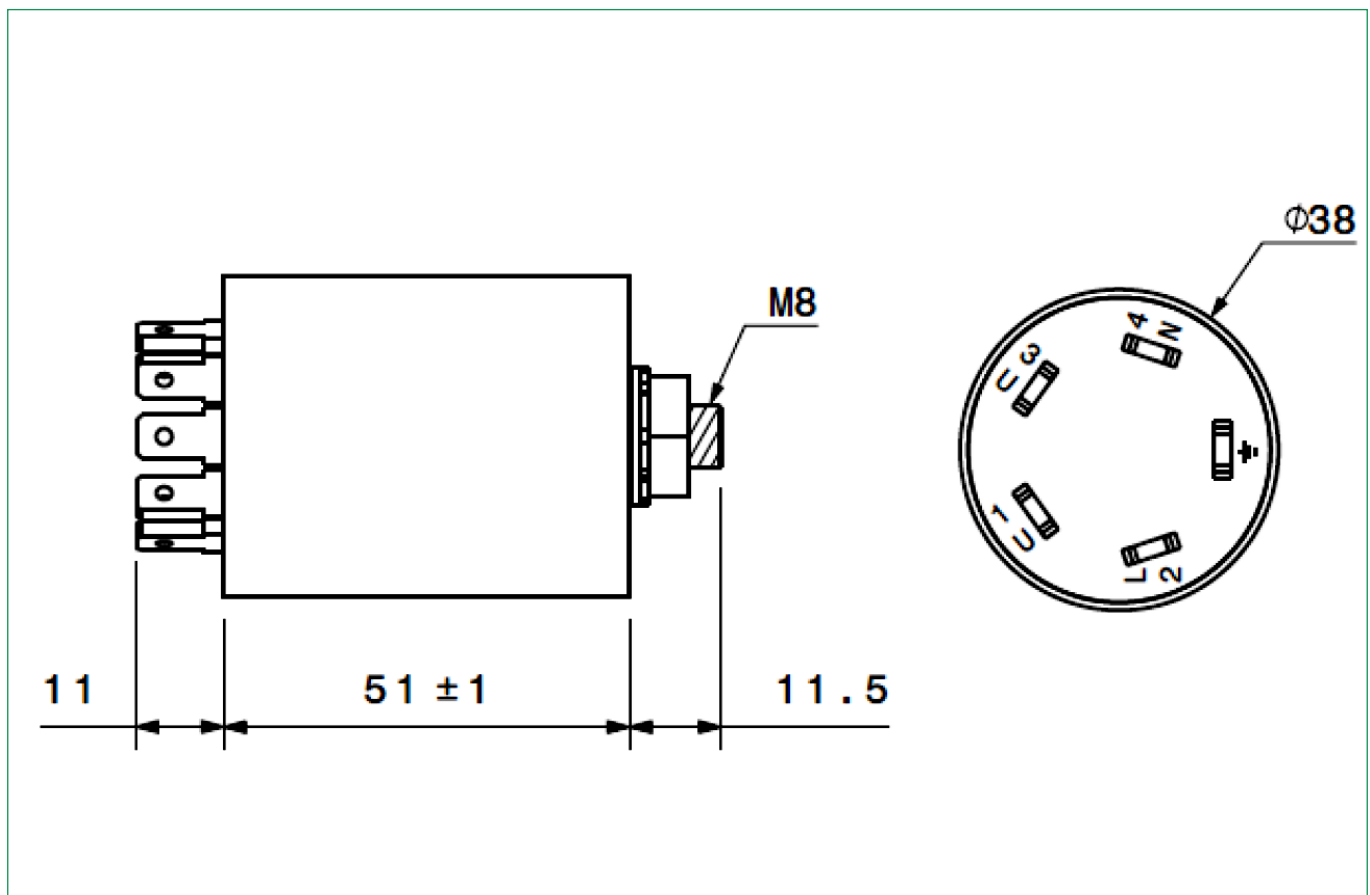
Rated current [A]

Typical circuit Diagram


Ordering Information

Model Number	Part Number	Rated Current @40°C	Leakage Current (μA) @250VAC/50Hz	Termination	Weight (Grams)
MF 210-P	E100054-2	3A	0.74	Fastons	70
MF 210-P	E100054-3	6A	0.16	Fastons	70
MF 210-P	E100054-4	10A	0.74	Fastons	70
MF 210-P	E100054-5	12A	0.74	Fastons	70
MF 210-P	E100054-6	16A	0.16	Fastons	70

Mechanical Drawing:

3A-16A Types

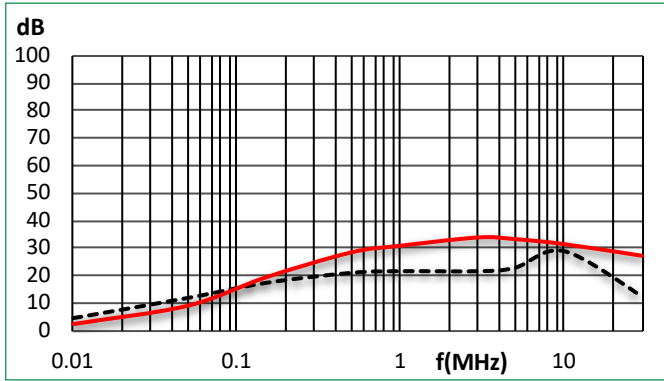


Note: All dimensions in mm; Tolerances according to ISO2768-C

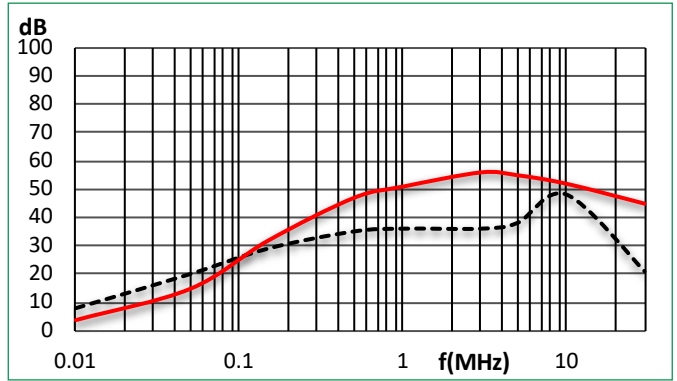
Insertion Loss : Common mode _____ Differential Mode

Per CISPR 17; DM=50/50 sym; CM=50/50 asym

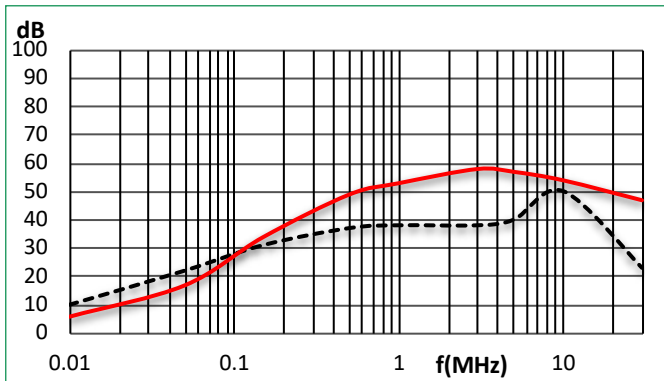
3A/6A



10A



12A



16A

