


Features:

- Integral IEC Connector
- High Conducted attenuation performance
- Rated currents up to 10 A
- Double Pole Single Throw Switch

Applications:

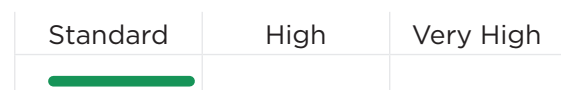
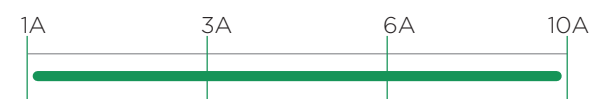
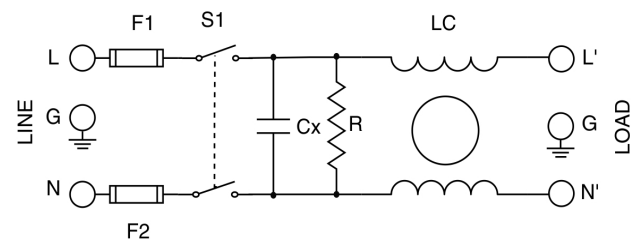
- Medical Application
- Electrical & Electronic Equipments
- Testing & Measurement Equipments
- Household equipment
- Rack mounting equipment

DATA SHEET
**SINGLE PHASE EMI FILTER - MF 160
IEC INLET WITH FUSE & SWITCH
(MEDICAL VERSION)**
Description

These series range of IEC Inlet type filters with fuse and Switch are designed to suppress undesirable electrical disturbances in Power Lines. They limit the amplitude of interfering voltages on AC power lines and prevent them from propagating into or out of the filtered equipment.

Technical Specifications:

Maximum Continuous Operating Voltage	: 250VAC, 50/60Hz(UL Approval) 250VDC
Operating Frequency	: DC to 400Hz
Current ratings	: 1A to 10A @40°C
High Potential test voltage	: L to G 2250Vdc for 1 Minute L to L 1450Vdc for 1 Minute
Overload Capability	: 135% of Rated current for 15 minutes
Design Corresponding to	: UL 60939-3, CSA 22.2 No.8-13
Flammability corresponding to	: UL 94 V-0
Temperature range	: -25°C to +85°C
Climatic Category	: 25/85/21

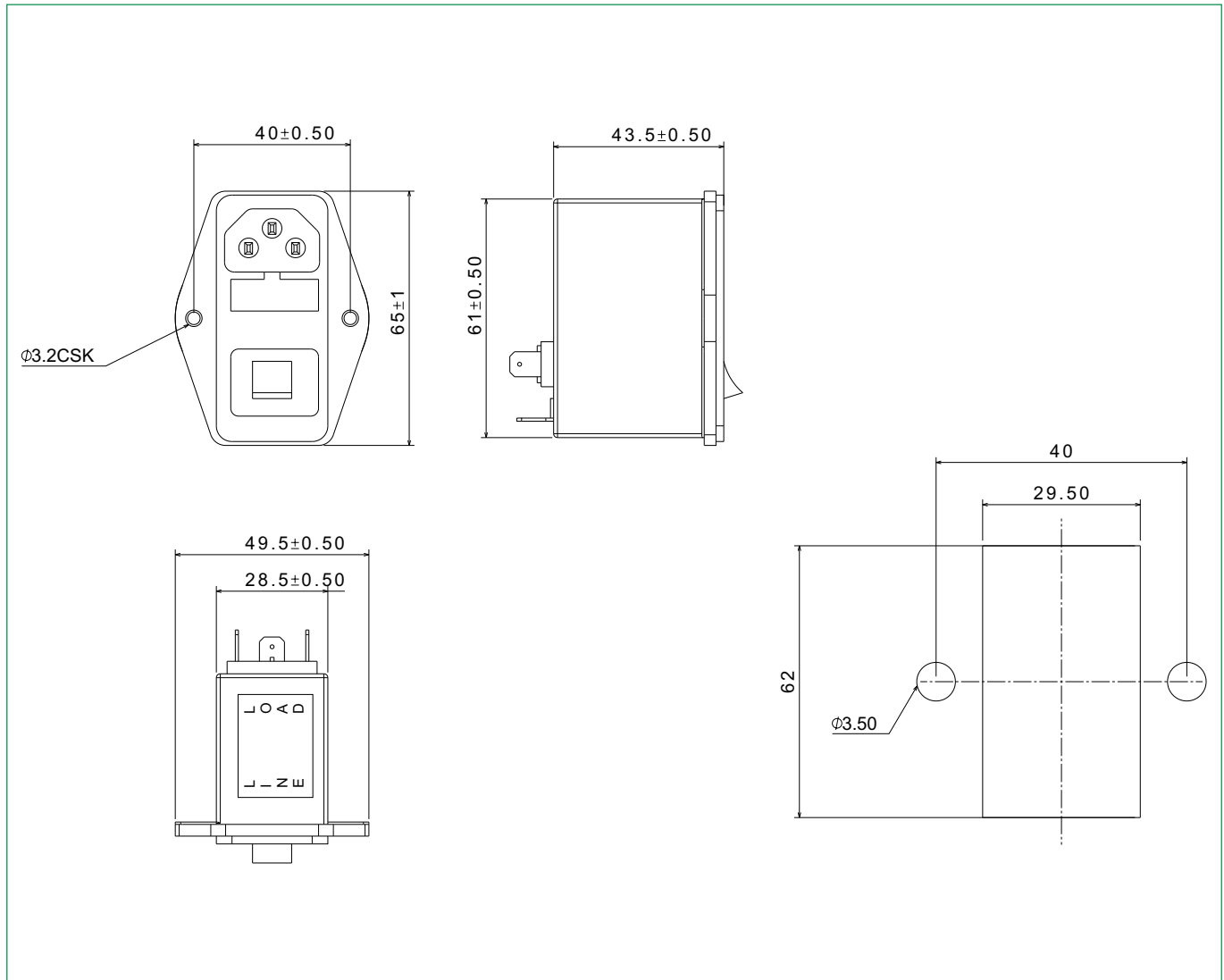
Performance Indicator

Rated current [A]

Typical circuit Diagram


Ordering Information

Model Number	Part Number	Rated Current @40°C	Leakage Current (μA) @250VAC	Termination	Weight (Grams)
MF 160	E101004-2	1A	<5	Fastons - 6.3x0.8	120
MF 160	E101004-3	3A	<5	Fastons - 6.3x0.8	120
MF 160	E101004-4	6A	<5	Fastons - 6.3x0.8	120
MF 160	E101004-5	10A	<5	Fastons - 6.3x0.8	120

Mechanical Drawing:

1 to 10A Types

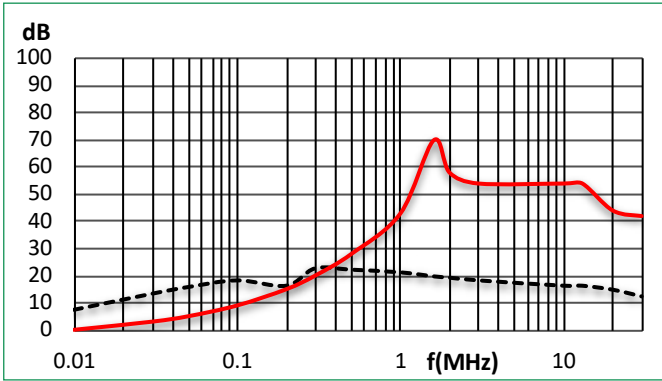


Note: All dimensions in mm; Tolerances according to ISO2768-C

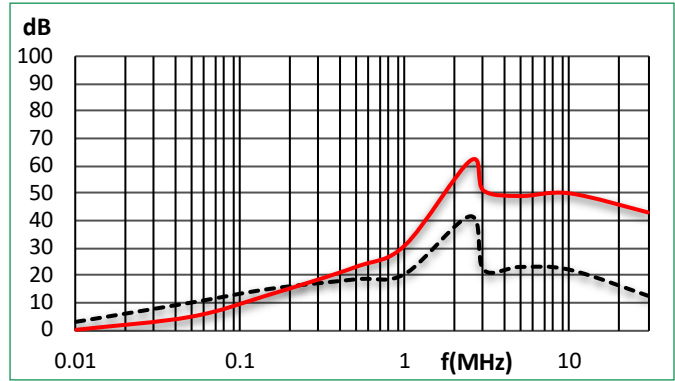
Insertion Loss : Common mode _____ Differential Mode

Per CISPR 17; DM=50/50 sym; CM=50/50 asym

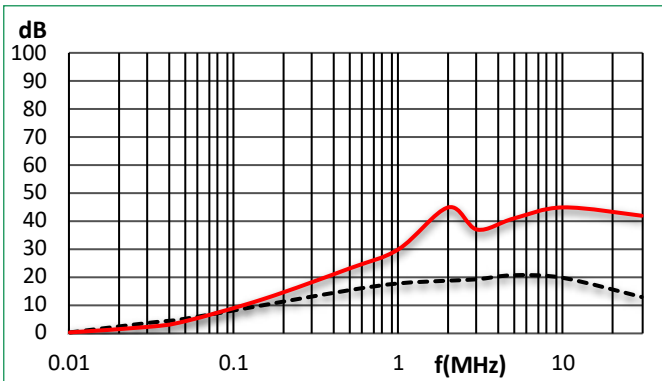
1A



3A



6A



10A

