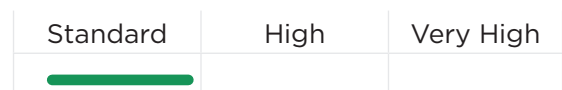
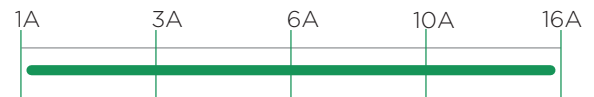



Features:

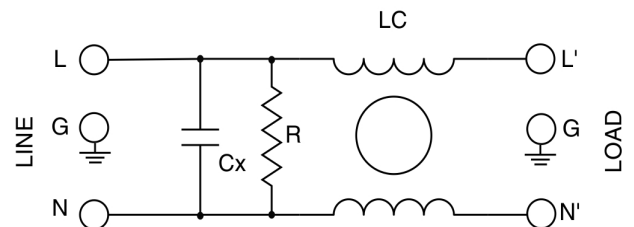
- Rated Current up to 16A
- Ultra-low leakage current
- High Conducted attenuation performance

Applications:

- Medical Equipments
- Frequency convertors
- Stepper motor drives
- UPS/Inverters

Performance Indicator

Rated current [A]

DATA SHEET
**SINGLE PHASE EMI FILTER - MF 140
IEC INLET TYPE (MEDICAL VERSION)**
Description

These series range of filters with IEC Inlet are designed to suppress undesirable electrical disturbances in Power Lines. They limit the amplitude of interfering voltages on AC power lines and prevent them from propagating into or out of the filtered equipment.

Typical circuit Diagram

Technical Specifications:

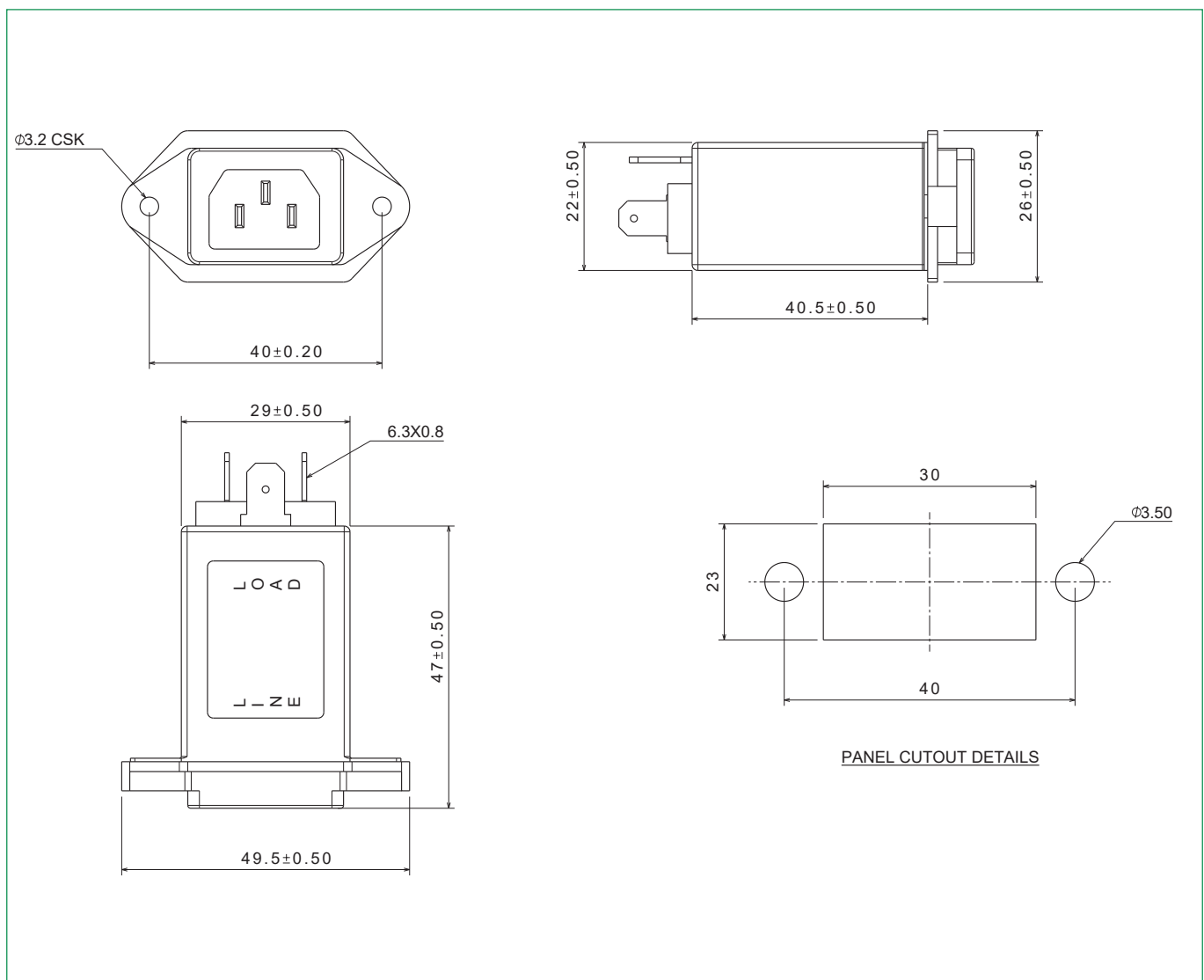
Maximum Continuous Operating Voltage	: 250VAC, 50/60Hz(UL Approval) 250VDC
Operating Frequency	: DC to 400Hz
Current ratings	: 1A to 16A @40°C
High Potential test voltage	: L to G 2250Vdc for 1 Minute L to L 1450Vdc for 1 Minute
Overload Capability	: 135% of Rated current for 15 minutes
Design Corresponding to	: UL 60939-3, CSA 22.2 No.8-13
Flammability corresponding to	: UL 94 V-0
Temperature range	: -25°C to +85°C
Climatic Category	: 25/85/21

Ordering Information

Model Number	Part Number	Rated Current @40°C	Leakage Current (μA) @250VAC/50Hz	Termination	Weight (Grams)
MF 140	E100998-2	1A	<5	Fastons - 6.3x0.8	60
MF 140	E100998-8	2A	<5	Fastons - 6.3x0.8	60
MF 140	E100998-3	3A	<5	Fastons - 6.3x0.8	60
MF 140	E100998-4	6A	<5	Fastons - 6.3x0.8	60
MF 140	E100998-5	10A	<5	Fastons - 6.3x0.8	60
MF 140	E100998-6	15A	<5	Fastons - 6.3x0.8	60
MF 140	E100998-7	16A	<5	Fastons - 6.3x0.8	60

Mechanical Drawing:

1A-16A

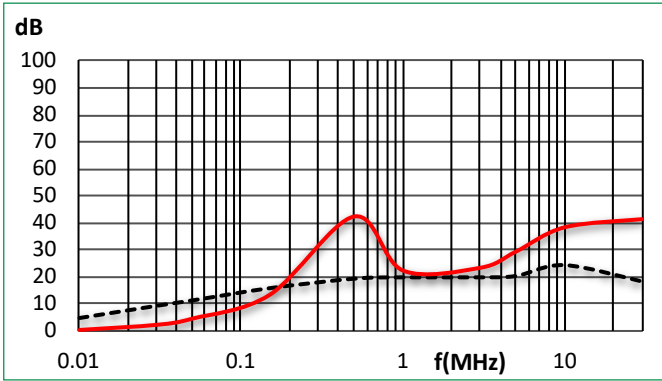


Note: All dimensions in mm; Tolerances according to ISO2768-C

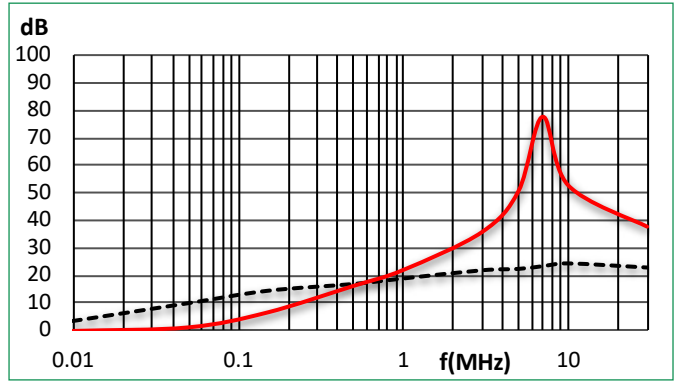
Insertion Loss : Common mode _____ Differential Mode

Per CISPR 17; DM=50/50 sym; CM=50/50 asym

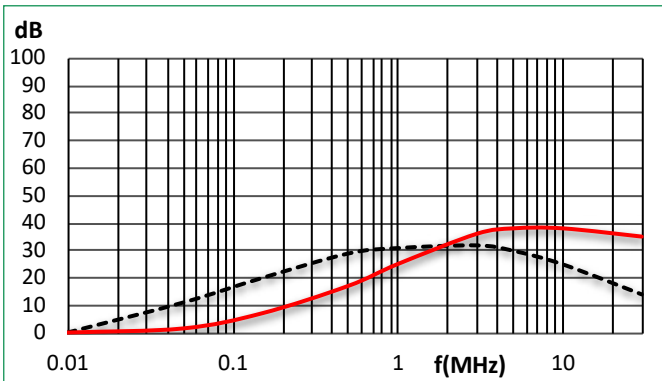
1A/2A



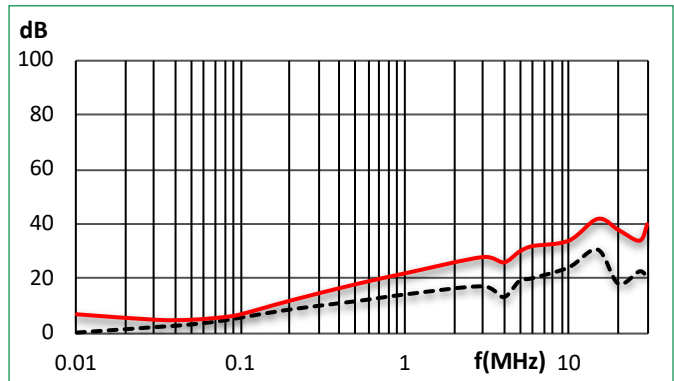
3A



6A



10A



15A/16A

