


DATASHEET

AC/DC CONTROL LINE HEMP FILTER HEMP-CLF (Multi Pair)

Description

AC/DC Control Line Filter are designed to meet all the requirements of MIL -STD-188-125-1 and MIL-F-15733. The Filter is classified under unrestricted lines of Intrasite of MIL STD-188-125-1 and Tested for same. The residual current observed is less than 100mA, which is well within the MIL STD requirement also meets or exceeds the insertion loss requirements throughout the frequency

Technical Specifications

Nominal Voltages	24 VDC/30VDC/48VDC/68VDC/120VAC/ 230VAC
Current Ratings	1 to 6A
Number of Lines*	2, 4, 6 and 8
Insertion Loss	80dB from 100KHz to 3GHz
Operating Temperature Range	-30° C to +55° C
Maximum Temperature Rise	+25° C
Design Corresponding to	MIL-STD-188-125-1&2 (E1 &E2 Pulse), IEC 61000-6-2, MIL-F-15733
Enclosure Size	As per the Table
Input Connection	MIL Connector
Output Connection	Threaded Tube
Enclosure	CRCA with Plating
Finish	Paint / Powder Coating

Features

Very easy to Install

No. of Lines can be made as per customer requirements

Models with various Voltages, Currents and pairs available.

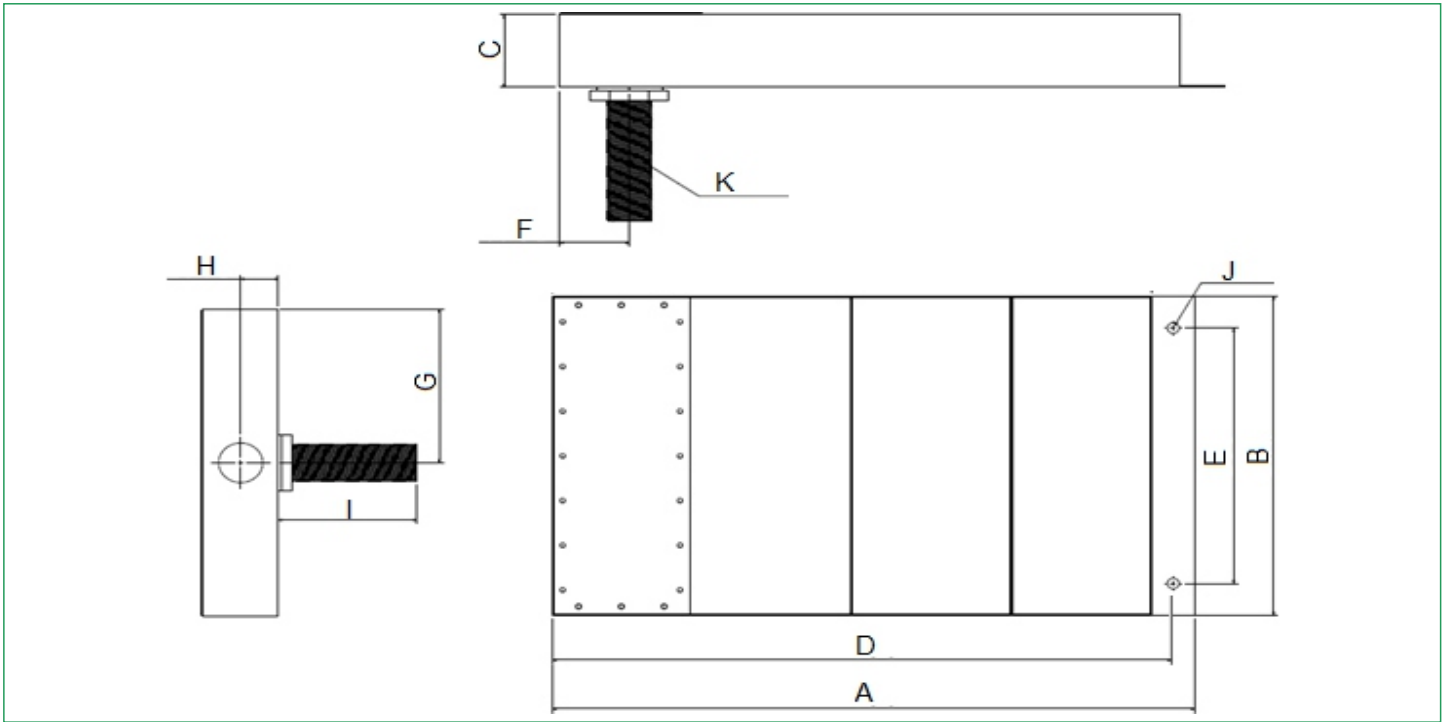
Applications

Electrical / Electronic Equipment .

Shielded Rooms.

Low Power Source.

Mechanical Drawing



Filter Type	A	B	C	D	E	F	G	H	I	J	K
1 Pair	450	80	55	435	50	47.5	40	27.5	100	4.2	M14
2 Pair	450	125	55	435	85	47.5	62.5	27.5	100	6.2	M20
3 Pair	450	180	55	435	130	47.5	90	27.5	100	6.2	M25
4 Pair	450	250	55	435	200	47.5	125	27.5	100	8.2	M30