


**DATASHEET**

# THREE PHASE EMI FILTER-MIL CONNECTOR

## Description

MIL Connector EMI Filters are used to enable equipment used in military ground, vehicles and support equipment to comply with MIL-STD-461 and MIL-STD-464 Conducted emission requirements

## Technical Specifications

Maximum Continuous Operating Voltage	440/520VAC
Operating Frequency	50/60Hz
Current ratings	6A to 150A @40°C
High Potential test voltage	L to G 2660Vdc for 1 Minute L to L 1950Vdc for 1 Minute
Overload Capability	135% of Rated current for 15minutes
Design Corresponding to	UL 60939-3, CSA 22.2 No.8-13 and IEC 60939
Flammability corresponding to	UL 94 V-0
Temperature range	-25°C to +85°C
Climatic Category	25/85/21
Enclosure	CRCA/Plated/Powder Coated

## Approval & Compliance



## Features

- EMI/EMC
- Superior Performance
- Chassis mounting 3 Phase Filter

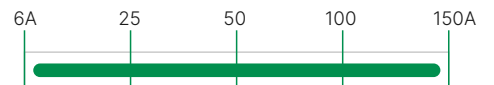
## Applications

- Industrial
- Military and Navy systems
- Vehicle

## Performance Indicator

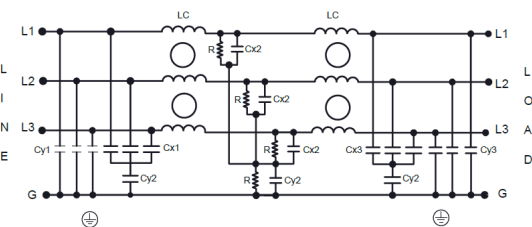
Standard	High	Very High

Rated current [A]

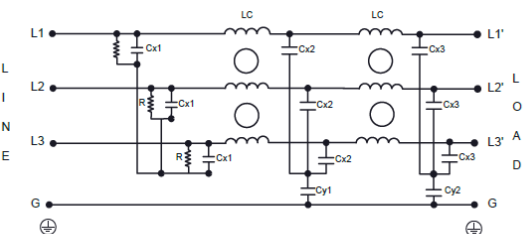


## Typical circuit Diagram

Upto 100A



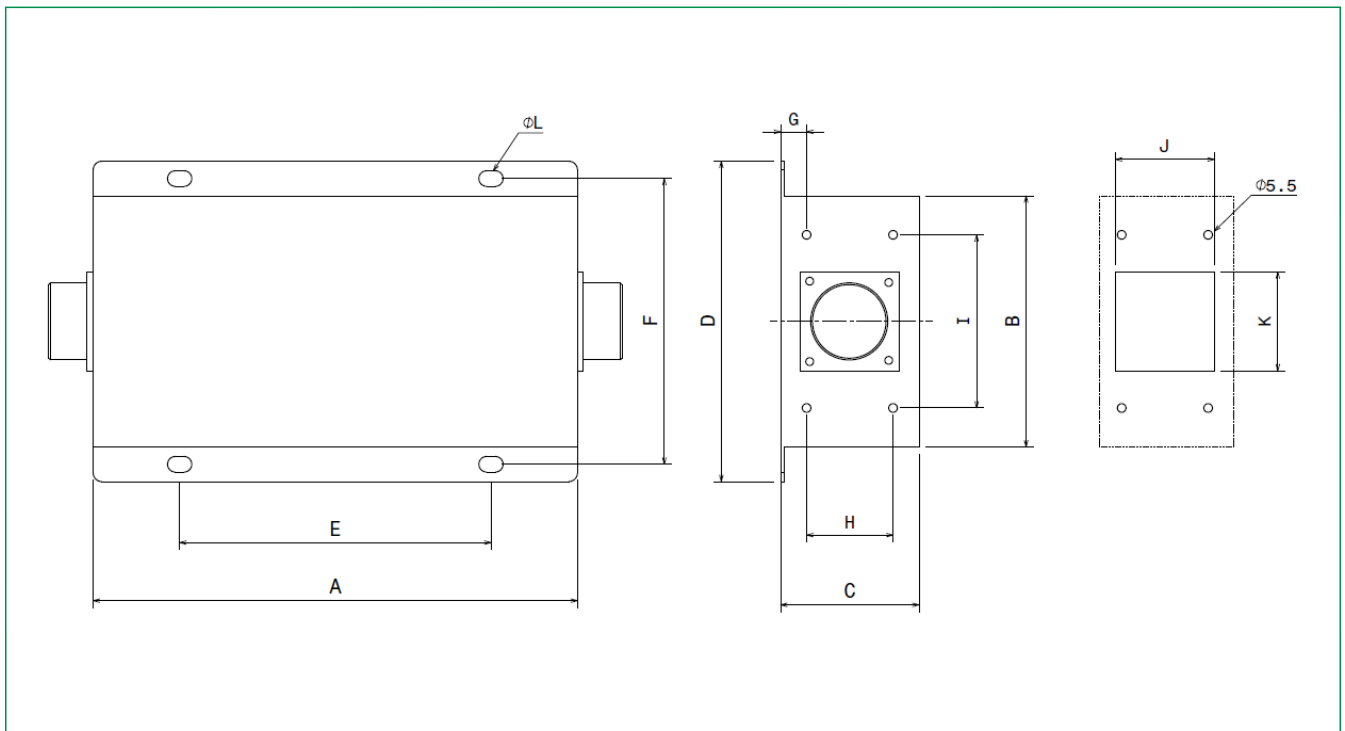
75A, 125A & Above



## Ordering Code Information

Part Number	Ordering Code (for 440VAC)	Ordering Code (for 520VAC)	Rated Current @40°C	Termination	Weight (Kgs)
MF 423-3-3D-M	E104922-1	E104934-1	6A	MIL Circular Connector	3
MF 423-3-3D-M	E104923-1	E104935-1	10A		3
MF 423-3-3D-M	E104924-1	E104936-1	20A		3
MF 423-3-3D-M	E104925-1	E104937-1	30A		3
MF 423-3-3D-M	E104926-1	E104938-1	40A		4
MF 423-3-3D-M	E104927-1	E104939-1	50A		4
MF 423-3-3D-M	E104928-1	E104940-1	60A		6
MF 423-3-3D-M	E104929-1	E104941-1	75A		7
MF 423-3-3D-M	E104930-1	E104942-1	80A		7
MF 423-3-3D-M	E104931-1	E104943-1	100A		7
MF 423-3-3D-M	E104932-1	E104944-1	125A		7
MF 423-3-3D-M	E104933-1	E104945-1	150A		7

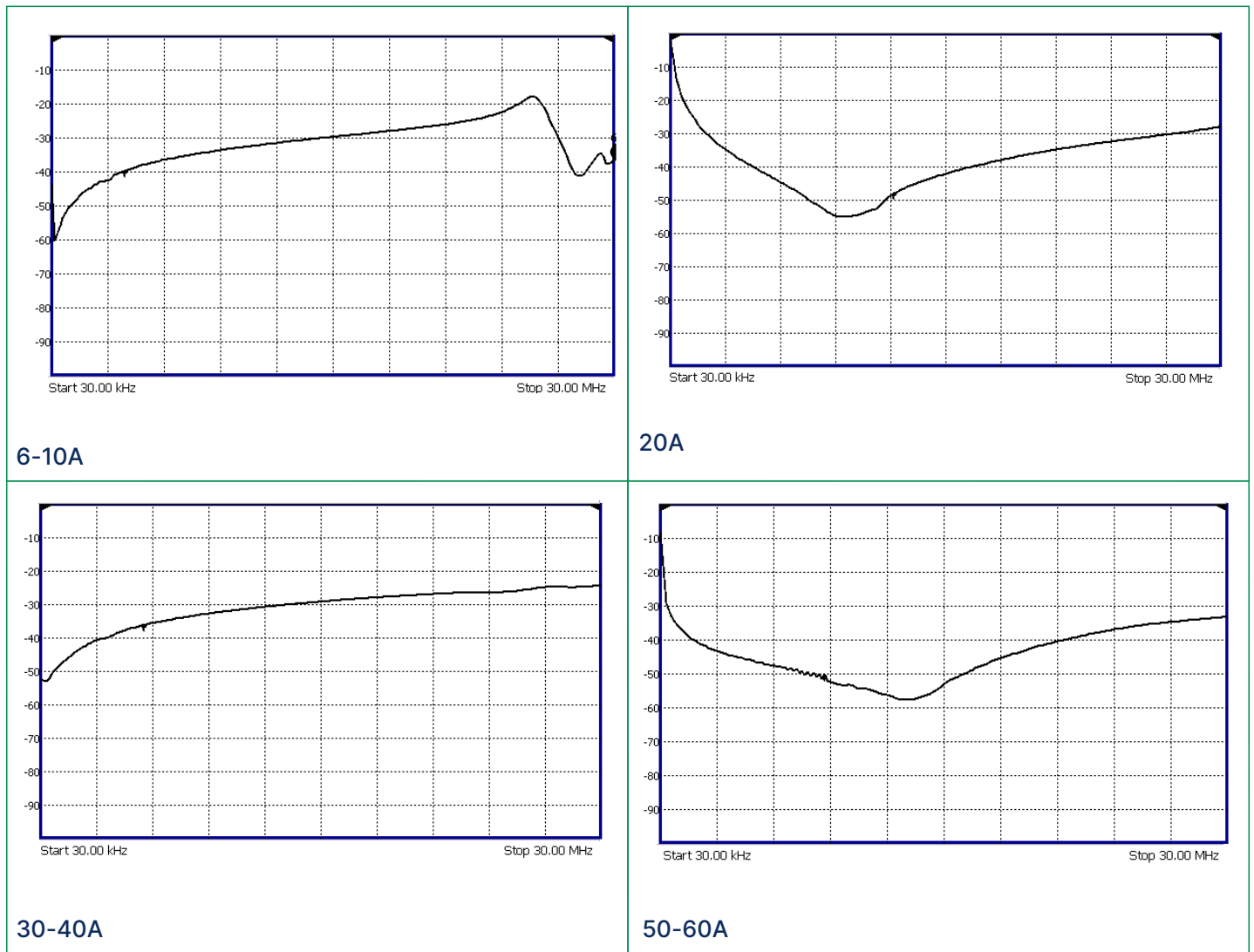
## Mechanical Drawing

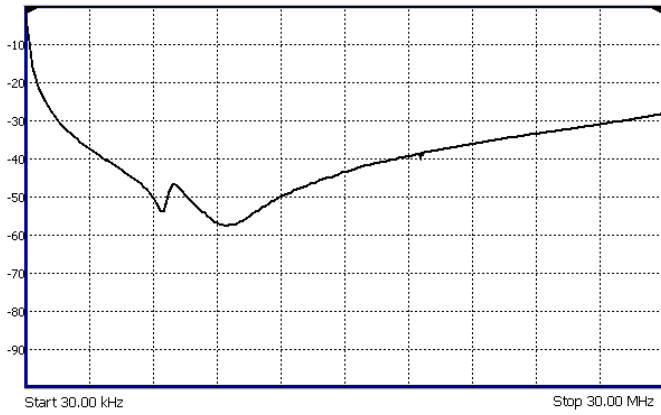


Current Rating	A	B	C	D	E	F	G	H	I	J	K	L
6A	170	130	75	170	120	150	15	45	90	33	33	6
10A	220	130	75	170	150	150	15	45	90	33	33	7
20A	220	130	75	170	150	150	15	45	90	34	34	7
30-40A	220	130	75	170	150	150	15	45	90	40	40	7
50-60A	220	130	75	170	150	150	15	45	90	53	53	7
75-80A	300	150	90	190	250	170	20	50	110	53	53	9
100A-150A	300	150	90	190	250	170	20	50	110	65	65	9

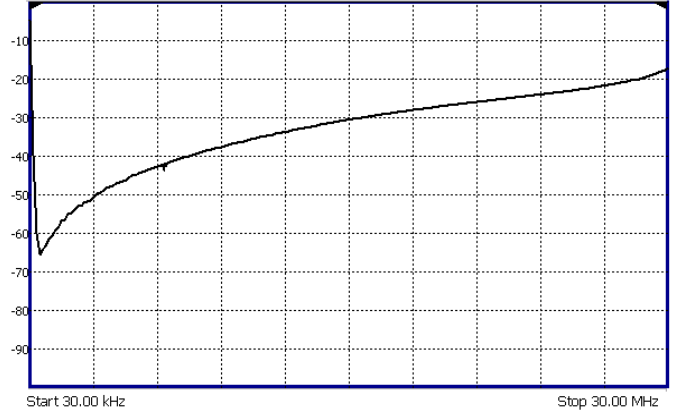
Note: All dimensions in mm; Tolerances according: ISO2768-m

### Insertion Loss – (Common mode)

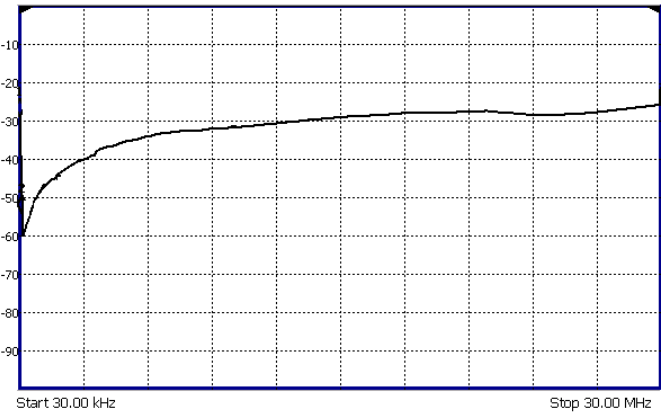




75-80A



100A



125-150A