


DATASHEET

Single/Three Phase HEMP Filter

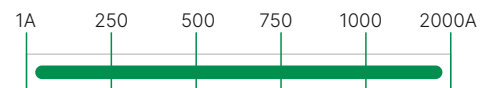
Technical Specifications

| | |
|-----------------------------------|---|
| Nominal Voltage | 230 VAC for Single Phase 440 VAC for Three Phase |
| Operating Frequency | 50/60Hz |
| Nominal Current | Upto 2000A |
| Short Pulse Common Mode | 5kA (20ns/500ns-550ns) ≤ 10A |
| Short Pulse Line to Ground | 2.5kA (20ns/500ns-550ns) ≤ 10A |
| Intermediate Pulse Common mode | 0.25kA (1.5µs/3ms-5ms) – No Damage |
| Intermediate Pulse Line to Ground | 0.25kA (1.5µs/3ms-5ms) – No Damage |
| Overload Current Rating | 140% of Rated Current for 15 minutes |
| Discharge Resistance | 1.5MΩ internally connected |
| Insulation Resistance | >100MΩ (Prior to fixing Discharger resistors) |
| Voltage Drop | Max 2% @ 240VAC |
| Operating Temperature range | -40°C to 55°C |
| Dielectric withstand voltage | 2500VDC |
| Casing Material | CRCA |
| Plating | Electrodeposited Tin Plating (ASTMB545) |
| Finish | Paint over Primer |

Performance Indicator



Rated current [A]

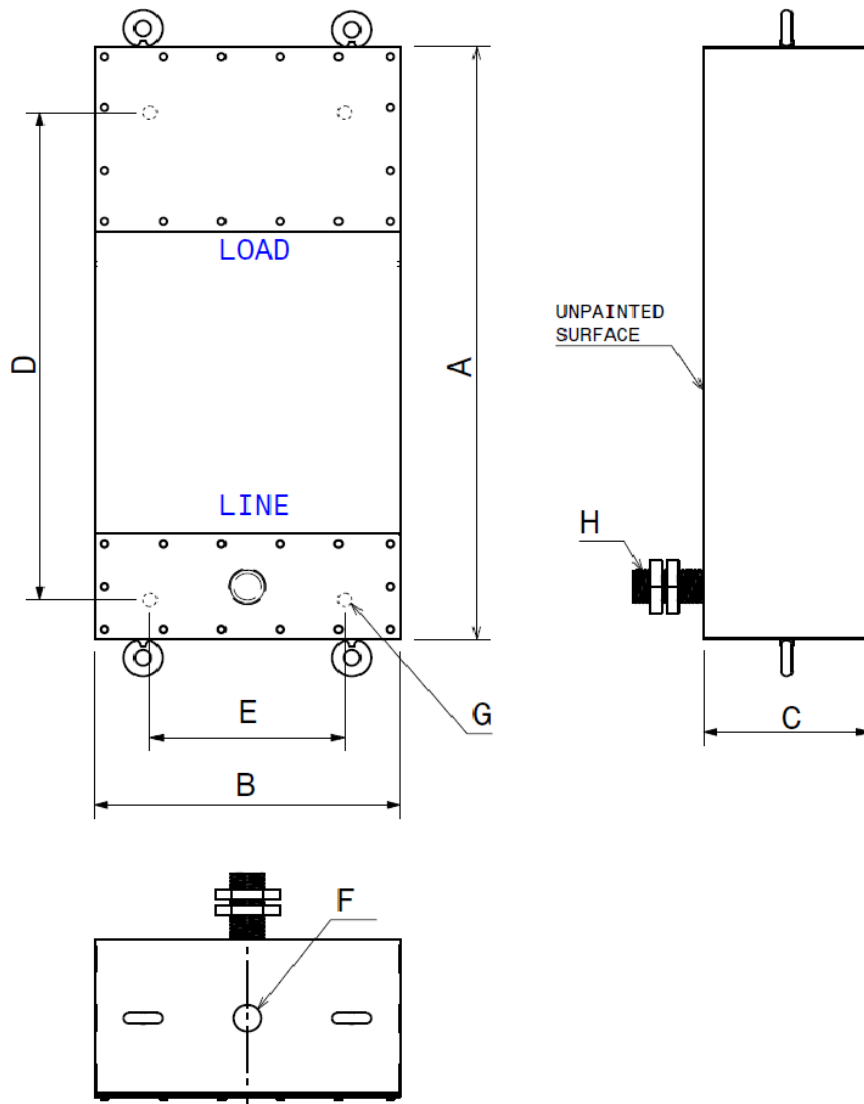


INSERTION LOSS

| Frequency | 10 KHz | 100KHZ | 1MHz | 10MHz | 100MHz | 1GHz | 3GHz |
|----------------|--------|--------|------|-------|--------|------|------|
| Insertion Loss | 20dB | 40dB | 60dB | 80dB | 80dB | 80dB | 80dB |

Note: ** Very High attenuation Filter upto 40GHz can be made as per customer request.

Mechanical Dimensions

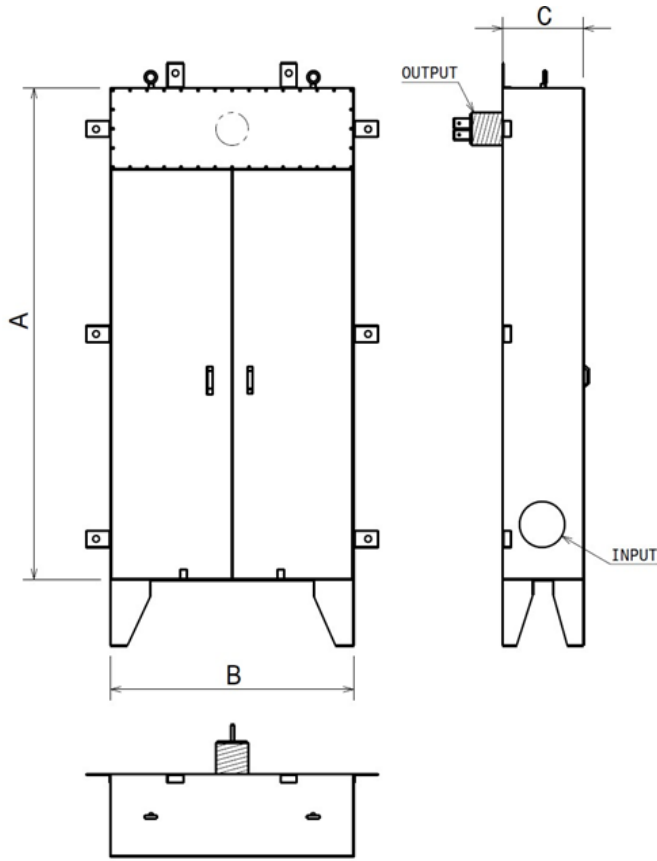


Mechanical Dimensions

| HEMP FILTER | CURRENT RATING(A) | A | B | C | D | E | F | G | H |
|---------------------|-------------------|------|------|--------------------------|------|-----|----|------|------|
| 2 LINE | 6 & 16 | 450 | 220 | 150 | 380 | 170 | 25 | 8.5 | M25 |
| | 32 | 800 | 240 | 200 | 700 | 190 | 25 | 8.5 | M30 |
| | 63 | 900 | 300 | 200 | 800 | 250 | 30 | 8.5 | M30 |
| | 100 | 1050 | 340 | 200 | 950 | 280 | 40 | 10.5 | M40 |
| | 150 | 1250 | 500 | 200 | 1100 | 440 | 50 | 10.5 | M60 |
| | 200 | 1250 | 500 | 250 | 1100 | 440 | 60 | 12.5 | M75 |
| | 300 | 1500 | 500 | 250 | 1350 | 440 | 70 | 12.5 | M75 |
| | 400 | 1800 | 500 | 250 | 1650 | 440 | 70 | 12.5 | M80 |
| | 500 | 1800 | 500 | 250 | 1650 | 440 | 80 | 12.5 | M80 |
| | 600 | 2200 | 500 | 300 | 2050 | 440 | 80 | 12.5 | M100 |
| | 700 | 2200 | 500 | 300 | 2050 | 440 | 80 | 12.5 | M100 |
| MAT: CRCA / PAINTED | | | | TERMINATION : NUT & BOLT | | | | | |
| 4 LINE | 6 & 16 | 450 | 440 | 150 | 380 | 380 | 30 | 8.5 | M30 |
| | 32 | 800 | 480 | 200 | 700 | 420 | 30 | 8.5 | M50 |
| | 63 | 900 | 600 | 200 | 800 | 540 | 40 | 8.5 | M50 |
| | 100 | 1050 | 680 | 200 | 350 | 610 | 40 | 10.5 | M50 |
| | 150 | 1250 | 950 | 200 | 1100 | 880 | 50 | 10.5 | M60 |
| | 200 | 1250 | 950 | 250 | 1100 | 880 | 50 | 12.5 | M70 |
| | 300 | 1500 | 950 | 250 | 1350 | 880 | 75 | 12.5 | M100 |
| | 400 | 1800 | 950 | 250 | 1650 | 880 | 75 | 12.5 | M180 |
| | 500 | 1800 | 950 | 250 | 1650 | 880 | 75 | 12.5 | M260 |
| | 600 | 2200 | 1000 | 300 | 2050 | 900 | 75 | 12.5 | M280 |
| | 700 | 2200 | 1000 | 300 | 2050 | 900 | 75 | 12.5 | M300 |

FOR HIGH CURRENTS PIPE SIZE AS PER CUSTOMER REQUEST

Mechanical Dimensions



NOTE:

1.INPUT CONNECTION CAN BE TAKEN VIA KNOCKOUT HOLE OR CONNECTIONS CAN BE MADE THROUGH THE EXTENDED BUSBAR

2.OUTPUT CONNECTION IS MADE THROUGH THE EXTENDED BUSBAR WHICH COMES VIA THREADED PIPE

***PIPE SIZE AS PER CUSTOMER REQUIREMENTS

| HEMP FILTER | CURRENT RATING(A) | A | B | C |
|-------------|-------------------|------|------|-----|
| 2 LINE | 800 | 2500 | 700 | 350 |
| | 1000 | 2700 | 700 | 350 |
| | 1200 | 2700 | 700 | 350 |
| | 1500 | 2700 | 700 | 350 |
| | 2000 | 3400 | 750 | 500 |
| 4 LINE | 800 | 2500 | 1200 | 350 |
| | 1000 | 2700 | 1200 | 350 |
| | 1200 | 2700 | 1200 | 350 |
| | 1500 | 2700 | 1200 | 350 |
| | 2000 | 3400 | 1250 | 500 |

MAT:GI OVER POWDER COATING(OUTER ENCLOSURE)