



# Power & Energy Management

Product Catalogue



# Index

## 01 EMI/EMC Products

Single Phase	IEC Inlet	04-05
	Single Stage	05
	Dual Stage	06
	Chokes	07
	PCB Mount	07
Three Phase	Single Stage	08
	Dual Stage	08-09
	Three Stage	10-11
DC Filter		11

## 02 Surge Protectors

Single Phase Surge Protector	13
Single Phase RC Filter	13
RC Network	13
Three Phase Surge Protector	13
Three Phase RC Filter	13

## 03 Power Quality Products

AC Single Phase Line Reactor	15
AC Three Phase Line Reactor	15

---

# 01 EMI/EMC Products

EMI can cause service interruption, data loss, permanent damage to equipment and failure when left unattended. Our sophisticated EMI/EMC products use high quality, grade A raw materials in an exhaustive range of specifications that meet customers' varied requirements.



# EMI Filters / Single Phase Filter / IEC Inlet

## MF 300



**Operating Voltage**  
250VAC

**Current Rating**  
1A to 16A

**Operating Frequency**  
50/60Hz

**Mounting**  
IEC Inlet Mounting

**Performance Indicator**

Standard	High	Very High
<div style="width: 100%; height: 5px; background-color: green;"></div>		



## MF 310



**Operating Voltage**  
250VAC

**Current Rating**  
1A to 10A

**Operating Frequency**  
50/60Hz

**Mounting**  
IEC Inlet Mounting

**Performance Indicator**

Standard	High	Very High
<div style="width: 100%; height: 5px; background-color: green;"></div>		



## MF 320



**Operating Voltage**  
250VAC

**Current Rating**  
1A to 10A

**Operating Frequency**  
50/60Hz

**Mounting**  
IEC Inlet Mounting

**Performance Indicator**

Standard	High	Very High
<div style="width: 100%; height: 5px; background-color: green;"></div>		



## MF 310 S



**Operating Voltage**  
250VAC

**Current Rating**  
1A to 10A

**Operating Frequency**  
50/60Hz

**Mounting**  
IEC Inlet Mounting

**Performance Indicator**

Standard	High	Very High
<div style="width: 100%; height: 5px; background-color: green;"></div>		



## EMI Filters / Single Phase Filter / IEC Inlet

### MF 320-2D



**Operating Voltage**  
250VAC

**Current Rating**  
1A to 10A

**Operating Frequency**  
50/60Hz

**Mounting**  
IEC Inlet Mounting

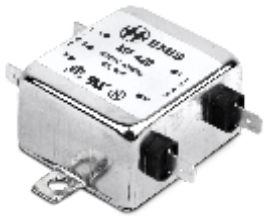
**Performance Indicator**

Standard	High	Very High
██████████	████████████████████	██



## EMI Filters / Single Phase Filter / Single Stage

### MF 420



**Operating Voltage**  
250VAC

**Current Rating**  
1A to 125A

**Operating Frequency**  
50/60Hz

**Mounting**  
Chassis Mounting

**Performance Indicator**

Standard	High	Very High
██████████	████████████████████	██



### MF 420-HP



**Operating Voltage**  
250VAC

**Current Rating**  
1A to 50A

**Operating Frequency**  
50/60Hz

**Mounting**  
Chassis Mounting

**Performance Indicator**

Standard	High	Very High
██████████	██	██



# EMI Filters / Single Phase Filter / Dual Stage

## MF 410



**Operating Voltage**  
250VAC

**Current Rating**  
1A to 100A

**Operating Frequency**  
50/60Hz

**Mounting**  
Chassis Mounting

**Performance Indicator**

Standard	High	Very High
█	█	



## MF 430



**Operating Voltage**  
250VAC

**Current Rating**  
1A to 60A

**Operating Frequency**  
50/60Hz

**Mounting**  
Chassis Mounting

**Performance Indicator**

Standard	High	Very High
█	█	



## MF 410-HP



**Operating Voltage**  
250VAC

**Current Rating**  
1A to 30A

**Operating Frequency**  
50/60Hz

**Mounting**  
Chassis Mounting

**Performance Indicator**

Standard	High	Very High
	█	█



## EMI Filters / Single Phase Filter / PCB Mount

### PCB Filters – MF 530



**Operating Voltage**  
250VAC

**Current Rating**  
1A to 10A

**Operating Frequency**  
50/60Hz

**Mounting**  
PCB Mount

#### Performance Indicator

Standard	High	Very High
█		



## EMI Filters / Chokes

### Differential Mode Choke Coil (DMC)



**Operating Voltage**  
250VAC

**Current Rating**  
0.5A to 25A

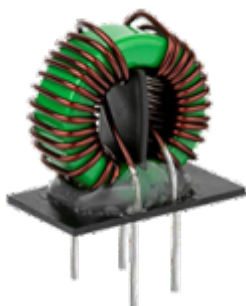
**Operating Frequency**  
50/60Hz

#### Performance Indicator

Standard	High	Very High
█		



### Common Mode Choke Coil (CMC)



**Operating Voltage**  
250VAC

**Current Rating**  
0.5A to 32A

**Operating Frequency**  
50/60Hz

#### Performance Indicator

Standard	High	Very High
█		



## EMI Filters / Three Phase Filter / Single Stage



### MF423-3W

**Operating Voltage**  
440/520VAC

**Current Rating**  
1A to 150A

**Operating Frequency**  
50/60Hz

**Mounting**  
Chassis Mounting

**Performance Indicator**

Standard	High	Very High
██████████		



### MF 423-4W

**Operating Voltage**  
440/520VAC

**Current Rating**  
1A to 150A

**Operating Frequency**  
50/60Hz

**Mounting**  
Chassis Mounting

**Performance Indicator**

Standard	High	Very High
██████████		



## EMI Filters / Three Phase Filter / Dual Stage



### MF 423-3-2D

**Operating Voltage**  
440/520VAC

**Current Rating**  
3A to 250A

**Operating Frequency**  
50/60Hz

**Mounting**  
Chassis Mounting

**Performance Indicator**

Standard	High	Very High
████████████████████		



### MF 423-3-2D-BS

**Operating Voltage**  
440/520VAC

**Current Rating**  
7A to 150A

**Operating Frequency**  
50/60Hz

**Mounting**  
Book Shelf

**Performance Indicator**

Standard	High	Very High
████████████████████		





## EMI Filters / Three Phase Filter / Dual Stage

### MF 423-4-2D



**Operating Voltage**  
440/520VAC

**Current Rating**  
6A to 250A

**Operating Frequency**  
50/60Hz

**Mounting**  
Chassis Mounting

**Performance Indicator**

Standard	High	Very High
█	█	



### MF 423-4-2D-BS



**Operating Voltage**  
440/520VAC

**Current Rating**  
7A to 150A

**Operating Frequency**  
50/60Hz

**Mounting**  
Book Shelf

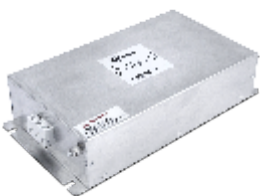
**Performance Indicator**

Standard	High	Very High
█	█	



## EMI Filters / Three Phase Filter / Three Stage

### MF423-3-3D



**Operating Voltage**  
440/520VAC

**Current Rating**  
6A to 250A

**Operating Frequency**  
50/60Hz

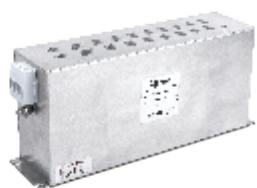
**Mounting**  
Chassis Mounting

**Performance Indicator**

Standard	High	Very High
	█	█



### MF 423-3-3D-BS



**Operating Voltage**  
440/520VAC

**Current Rating**  
7A to 150A

**Operating Frequency**  
50/60Hz

**Mounting**  
Book Shelf

**Performance Indicator**

Standard	High	Very High
	█	█



# EMI Filters / Three Phase Filter / Three Stage

## MF 423-4-3D



**Operating Voltage**  
440/520VAC

**Current Rating**  
6A to 250A

**Operating Frequency**  
50/60Hz

**Mounting**  
Chassis Mounting

**Performance Indicator**

Standard	High	Very High
	████████████████████	



## MF 423-4-3D-BS



**Operating Voltage**  
440/520VAC

**Current Rating**  
7A to 150A

**Operating Frequency**  
50/60Hz

**Mounting**  
Book Shelf

**Performance Indicator**

Standard	High	Very High
	████████████████████	



## MF 423-3-3D-BB



**Operating Voltage**  
440/520VAC

**Current Rating**  
300A to 1000A

**Operating Frequency**  
50/60Hz

**Mounting**  
Chassis Mounting

**Performance Indicator**

Standard	High	Very High
████████████████████		



## MF 423-4-3DD



**Operating Voltage**  
440/520VAC

**Current Rating**  
6A to 100A

**Operating Frequency**  
50/60Hz

**Mounting**  
Chassis Mounting

**Performance Indicator**

Standard	High	Very High
	████████████████████	



## EMI Filters / Three Phase Filter / Three Stage

### MF 423-4-3DD-BS



**Operating Voltage**  
440/520VAC

**Current Rating**  
7A to 150A

**Operating Frequency**  
50/60Hz

**Mounting**  
Book Shelf

**Performance Indicator**

Standard	High	Very High
	████████████████████	



## EMI Filters / DC Filter

### MF 610



**Operating Voltage**  
up to 1200VDC

**Current Rating**  
25A to 2500A

**Operating Frequency**  
-

**Mounting**  
Chassis Mounting

**Performance Indicator**

Standard	High	Very High
████████████████████		



---

## 02 Surge Protectors

Lightning and power system faults can cause high voltage surges subsequently causing enormous damage to electrical equipment. Our surge suppression and spark quencher solutions handle short duration over-voltages and protect electrical equipment from damage.



## Surge Protectors / Single Phase Surge Protector

---



### S-SP

**Operating Voltage**  
250VAC

**Surge Rating**  
20kA & 40kA @ 8/20µS

## Surge Protectors / Single Phase RC Filter

---



### S-RCF

**Operating Voltage**  
250VAC

**Surge Rating**  
6.5kA @ 8/20µS

## Surge Protectors / RC Network / Single Phase

---



### RCN

**Operating Voltage**  
250VAC

## Surge Protectors / Three Phase Surge Protector

---



### T-SP

**Operating Voltage**  
440VAC

**Surge Rating**  
20kA & 40kA @ 8/20µS

## Surge Protectors / Three Phase RC Filter

---



### T-RCF

**Operating Voltage**  
440VAC

**Surge Rating**  
6.5kA @ 8/20µS

---

## 03 Power Quality Products

Power quality products provide uninterrupted power supply and manage Harmonics, maintaining consistent power quality. Our superior range of Line and Load Reactors and Harmonic filters ensure reliable and efficient quality power for industrial and home needs.



## Power Quality / AC Single Phase Line Reactor

---



### PQR

**Operating Voltage**  
230VAC

**Current Rating**  
2A to 1000A

**Operating Frequency**  
50Hz

**Impedance**  
2%, 3% and 4%

## Power Quality / AC Three Phase Line Reactor

---



### PQR

**Operating Voltage**  
400VAC

**Current Rating**  
2.4A to 1000A

**Operating Frequency**  
50Hz

**Impedance**  
2%, 3% and 4%

#237-A5, Bommasandra Industrial Area, Hosur Road, Bengaluru 560 099  
Tel : 0091-80-2960 1335 / 2783 6838  
Fax : 0091-80-2783 6880

[www.emisindia.com](http://www.emisindia.com)