



Industrial

Product Catalogue



Index

01 EMI/EMC Products

Single Phase	IEC Inlet	05-06
	Single Stage	06-07
	Dual Stage	07
	Chokes	08
	PCB Mount	08
Two Phase		08
Three Phase	Single Stage	09
	Dual Stage	09-10
	Three Stage	10-12
DC Filter		12

02 Feedthrough Components

AC Feedthrough Capacitor	14
DC Feedthrough Capacitor	14
AC Feedthrough Filter	14
DC Feedthrough Filter	14

03 Surge Protectors

Single Phase Surge Protector	16
Single Phase RC Filter	16
RC Network	16
Three Phase Surge Protector	16
Three Phase RC Filter	16

04 Power Quality

AC Single Phase Line Reactor	18
AC Three Phase Line Reactor	18
Three Phase Passive Harmonic Filter	18
Three Phase dv-dt Reactor	18
Three Phase dv-dt Filter	19
Three Phase Sinewave Filter	19

01 EMI/EMC Products

EMI can cause service interruption, data loss, permanent damage to equipment and failure when left unattended. Our sophisticated EMI/EMC products use high quality, grade A raw materials in an exhaustive range of specifications that meet customers' varied requirements.



EMI Filters / Single Phase Filter / IEC Inlet

MF 300



Operating Voltage
250VAC

Current Rating
1A to 16A

Operating Frequency
50/60Hz

Mounting
IEC Inlet Mounting

Performance Indicator

Standard	High	Very High
<div style="width: 100%; height: 5px; background-color: green;"></div>		



MF 310



Operating Voltage
250VAC

Current Rating
1A to 10A

Operating Frequency
50/60Hz

Mounting
IEC Inlet Mounting

Performance Indicator

Standard	High	Very High
<div style="width: 100%; height: 5px; background-color: green;"></div>		



MF 320



Operating Voltage
250VAC

Current Rating
1A to 10A

Operating Frequency
50/60Hz

Mounting
IEC Inlet Mounting

Performance Indicator

Standard	High	Very High
<div style="width: 100%; height: 5px; background-color: green;"></div>		



MF 310 S



Operating Voltage
250VAC

Current Rating
1A to 10A

Operating Frequency
50/60Hz

Mounting
IEC Inlet Mounting

Performance Indicator

Standard	High	Very High
<div style="width: 100%; height: 5px; background-color: green;"></div>		



EMI Filters / Single Phase Filter / IEC Inlet

MF 320-2D



Operating Voltage
250VAC

Current Rating
1A to 10A

Operating Frequency
50/60Hz

Mounting
IEC Inlet Mounting

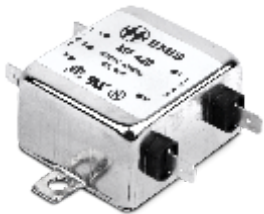
Performance Indicator

Standard	High	Very High
█	█	



EMI Filters / Single Phase Filter / Single Stage

MF 420



Operating Voltage
250VAC

Current Rating
1A to 125A

Operating Frequency
50/60Hz

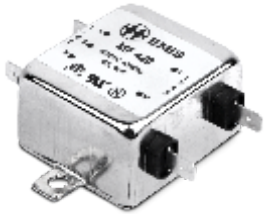
Mounting
Chassis Mounting

Performance Indicator

Standard	High	Very High
█		



MF 420-VF



Operating Voltage
250VAC

Current Rating
1A to 50A

Operating Frequency
50/60Hz

Mounting
Chassis Mounting

Performance Indicator

Standard	High	Very High
█	█	



MF 420-HP



Operating Voltage
250VAC

Current Rating
1A to 50A

Operating Frequency
50/60Hz

Mounting
Chassis Mounting

Performance Indicator

Standard	High	Very High
	█	█



EMI Filters / Single Phase Filter / Single Stage

MF 510



Operating Voltage
250VAC

Current Rating
1A to 6A

Operating Frequency
50/60Hz

Mounting
Clamp Mount

Performance Indicator

Standard	High	Very High
██████████		



EMI Filters / Single Phase Filter / Dual Stage

MF 410



Operating Voltage
250VAC

Current Rating
1A to 100A

Operating Frequency
50/60Hz

Mounting
Chassis Mounting

Performance Indicator

Standard	High	Very High
██████████	██████████	



MF 430



Operating Voltage
250VAC

Current Rating
1A to 60A

Operating Frequency
50/60Hz

Mounting
Chassis Mounting

Performance Indicator

Standard	High	Very High
██████████	██████████	



MF 410-HP



Operating Voltage
250VAC

Current Rating
1A to 30A

Operating Frequency
50/60Hz

Mounting
Chassis Mounting

Performance Indicator

Standard	High	Very High
	██████████	██████████



EMI Filters / Single Phase Filter / PCB Mount

PCB Filters – MF 530



Operating Voltage
250VAC

Current Rating
1A to 10A

Operating Frequency
50/60Hz

Mounting
PCB Mount

Performance Indicator

Standard	High	Very High
█		



EMI Filters / Chokes

Differential Mode Choke Coil (DMC)



Operating Voltage
250VAC

Current Rating
0.5A to 25A

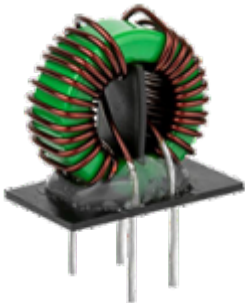
Operating Frequency
50/60Hz

Performance Indicator

Standard	High	Very High
█		



Common Mode Choke Coil (CMC)



Operating Voltage
250VAC

Current Rating
0.5A to 32A

Operating Frequency
50/60Hz

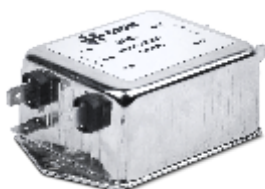
Performance Indicator

Standard	High	Very High
█		



EMI Filters / Two Phase Filter

MF 422



Operating Voltage
440VAC

Current Rating
1A to 100A

Operating Frequency
50/60Hz

Mounting
Chassis Mounting

Performance Indicator

Standard	High	Very High
█		



EMI Filters / Three Phase Filter / Single Stage



MF423-3W

Operating Voltage
440/520VAC

Current Rating
1A to 150A

Operating Frequency
50/60Hz

Mounting
Chassis Mounting

Performance Indicator

Standard	High	Very High
██████████		



MF 423-4W

Operating Voltage
440/520VAC

Current Rating
1A to 150A

Operating Frequency
50/60Hz

Mounting
Chassis Mounting

Performance Indicator

Standard	High	Very High
██████████		



EMI Filters / Three Phase Filter / Dual Stage



MF 423-3-2D

Operating Voltage
440/520VAC

Current Rating
3A to 250A

Operating Frequency
50/60Hz

Mounting
Chassis Mounting

Performance Indicator

Standard	High	Very High
██████████	██████████	



MF 423-3-2D-BS

Operating Voltage
440/520VAC

Current Rating
7A to 150A

Operating Frequency
50/60Hz

Mounting
Book Shelf

Performance Indicator

Standard	High	Very High
██████████	██████████	



EMI Filters / Three Phase Filter / Dual Stage

MF 423-4-2D



Operating Voltage
440/520VAC

Current Rating
6A to 250A

Operating Frequency
50/60Hz

Mounting
Chassis Mounting

Performance Indicator

Standard	High	Very High



MF 423-4-2D-BS



Operating Voltage
440/520VAC

Current Rating
7A to 150A

Operating Frequency
50/60Hz

Mounting
Book Shelf

Performance Indicator

Standard	High	Very High



EMI Filters / Three Phase Filter / Three Stage

MF423-3-3D



Operating Voltage
440/520VAC

Current Rating
6A to 250A

Operating Frequency
50/60Hz

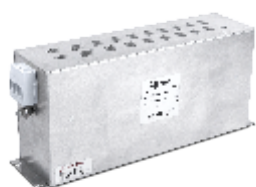
Mounting
Chassis Mounting

Performance Indicator

Standard	High	Very High



MF 423-3-3D-BS



Operating Voltage
440/520VAC

Current Rating
7A to 150A

Operating Frequency
50/60Hz

Mounting
Book Shelf

Performance Indicator

Standard	High	Very High



EMI Filters / Three Phase Filter / Three Stage

MF 423-4-3D



Operating Voltage
440/520VAC

Current Rating
6A to 250A

Operating Frequency
50/60Hz

Mounting
Chassis Mounting

Performance Indicator

Standard	High	Very High
	████████████████████	



MF 423-4-3D-BS



Operating Voltage
440/520VAC

Current Rating
7A to 150A

Operating Frequency
50/60Hz

Mounting
Book Shelf

Performance Indicator

Standard	High	Very High
	████████████████████	



MF 423-3-3D-BB



Operating Voltage
440/520VAC

Current Rating
300A to 1000A

Operating Frequency
50/60Hz

Mounting
Chassis Mounting

Performance Indicator

Standard	High	Very High
████████████████████		



MF 423-4-3DD



Operating Voltage
440/520VAC

Current Rating
6A to 100A

Operating Frequency
50/60Hz

Mounting
Chassis Mounting

Performance Indicator

Standard	High	Very High
	████████████████████	



EMI Filters / Three Phase Filter / Three Stage

MF 423-4-3DD-BS



Operating Voltage
440/520VAC

Current Rating
7A to 150A

Operating Frequency
50/60Hz

Mounting
Book Shelf

Performance Indicator

Standard	High	Very High
	████████████████████	



EMI Filters / DC Filter

MF 610



Operating Voltage
up to 1200VDC

Current Rating
25A to 2500A

Operating Frequency
-

Mounting
Chassis Mounting

Performance Indicator

Standard	High	Very High
████████████████████		



02 Feedthrough Components

Electromagnetic Feedthrough is one of the key sources of electrical noise in signal transmission. Specifically seen as a challenge in Si/ZnO Surface Acoustic Wave (SAW) devices, our Feedthrough components (Filters and Capacitors) attenuate the EM/RF noise by carrying high frequency/voltage electrical signals through enclosures.



Feedthrough Components / AC Feedthrough Capacitor

FTCAC



Operating Voltage 250VAC **Current Rating** 6A to 300A @ 60°C

Performance Indicator

Standard	High	Very High
	████████████████████	



Feedthrough Components / DC Feedthrough Capacitor

FTCDC



Operating Voltage 130VDC **Current Rating** 6A to 300A @ 60°C

Performance Indicator

Standard	High	Very High
	████████████████████	



Feedthrough Components / AC Feedthrough Filter

FTFAC



Operating Voltage 250VAC **Current Rating** 10A to 200A @ 60°C **Operating Frequency** 50/60Hz

Performance Indicator

Standard	High	Very High
	████████████████████	



Feedthrough Components / DC Feedthrough Filter

FTFDC



Operating Voltage 130VDC **Current Rating** 10A to 200A @ 60°C

Performance Indicator

Standard	High	Very High
	████████████████████	



03 Surge Protectors

Lightning and power system faults can cause high voltage surges subsequently causing enormous damage to electrical equipment. Our surge suppression and spark quencher solutions handle short duration over-voltages and protect electrical equipment from damage.



Surge Protectors / Single Phase Surge Protector



S-SP

Operating Voltage
250VAC

Surge Rating
20kA & 40kA @ 8/20 μ S

Surge Protectors / Single Phase RC Filter



S-RCF

Operating Voltage
250VAC

Surge Rating
6.5kA @ 8/20 μ S

Surge Protectors / RC Network / Single Phase



RCN

Operating Voltage
250VAC

Surge Protectors / Three Phase Surge Protector



T-SP

Operating Voltage
440VAC

Surge Rating
20kA & 40kA @ 8/20 μ S

Surge Protectors / Three Phase RC Filter



T-RCF

Operating Voltage
440VAC

Surge Rating
6.5kA @ 8/20 μ S

04 Power Quality Products

Power quality products provide uninterrupted power supply and manage Harmonics, maintaining consistent power quality. Our superior range of Line and Load Reactors and Harmonic filters ensure reliable and efficient quality power for industrial and home needs.



Power Quality / AC Single Phase Line Reactor



PQR

Operating Voltage
230VAC

Current Rating
2A to 1000A

Operating Frequency
50Hz

Impedance
2%, 3% and 4%

Power Quality / AC Three Phase Line Reactor



PQR

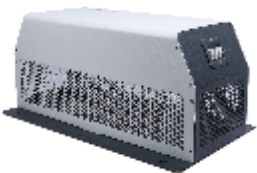
Operating Voltage
400VAC

Current Rating
2.4A to 1000A

Operating Frequency
50Hz

Impedance
2%, 3% and 4%

Power Quality / Passive Harmonic Filter / Three Phase



PQPH

Operating Voltage
380-415VAC

Current Rating
1.6A to 1000A

Operating Frequency
50Hz

Power Quality / Three Phase dv/dt Reactor



PQR

Operating Voltage
400VAC

Current Rating
4A to 1000A

Operating Frequency
50Hz

Impedance
0.8%

Power Quality / Three Phase dv/dt Filter



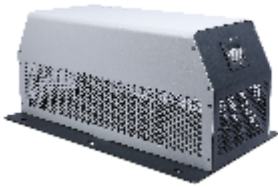
PQDT

Operating Voltage
400VAC

Current Rating
4A to 1100A

Operating Frequency
50Hz

Power Quality / Three Phase Sinewave Filter



PQSW

Operating Voltage
400VAC

Current Rating
2.3A to 1000A

Operating Frequency
50Hz

#237-A5, Bommasandra Industrial Area, Hosur Road, Bengaluru 560 099
Tel : 0091-80-2960 1335 / 2783 6838
Fax : 0091-80-2783 6880

www.emisindia.com