



Defence & Aerospace

Product Catalogue



Index

Military Grade Filters

Power Line Filter	Facility Power Line Filter	03
	HEMP Power Line Filter	03
Signal Line Filter	Telephone Line Filter	03
	Coaxial EMP Surge Protector	04
Data Line Filter	Serial Port-EMP Surge Protector	04
	Ethernet Filter	04
AC/DC Control Line HEMP Filter		05
Secondary Protector		05
Tempest Filter		05
EMI filter for MIL-STD-461E/F application		06

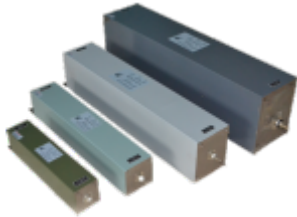
Military Grade Filters

Military standards are much more stringent when compared to commercial applications because of negligible room for error. Military Grade Filters are especially used for Point of Entry (POE) protection. They are broadly categorized as Power Line, Data Line and Signal Line Filters covering the power supply and telecommunication equipment in defence applications.



Military Grade Filters / Facility Power Line Filter

MF 420-1CF, 2CF, 3CF, 4CF



Operating Voltage
250VAC for Single Phase
440VAC for Three Phase

Current Rating
Up to 2000A

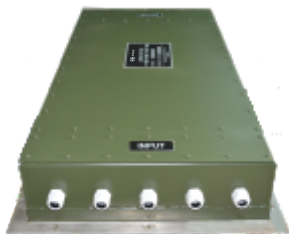
Operating Frequency
50/60Hz

Performance Indicator

Standard	High	Very High
	████████████████████	

Military Grade Filters / HEMP Power Line Filter

HEMP - PLF



Operating Voltage
230VAC for Single Phase
440VAC for Three Phase

Current Rating
Up to 2000A

Operating Frequency
50/60Hz

Performance Indicator

Standard	High	Very High
	████████████████████	

Tested as per MIL-STD-188-125-1/2

Military Grade Filters / Signal Line Filter / Telephone Line Filter

HEMP-TLF (Single Line)



Operating Voltage
± 150VDC

Current Rating
0.5A

Performance Indicator

Standard	High	Very High
	████████████████████	

Tested as per MIL-STD-188-125-1/2

HEMP-TLF (Multi Line)



Operating Voltage
95VAC / 125VDC

Current Rating
125mA

Performance Indicator

Standard	High	Very High
	████████████████████	

Tested as per MIL-STD-188-125-1/2



Military Grade Filters / Signal Line Filter / Coaxial EMP Surge Protector

EMISCOA200W



Input Power
200W

Surge Current
20kA, 8/20 μ s

Operating Frequency
DC / 2.5GHz

Tested as per MIL-STD-188-125-1/2

EMISCOA100W



Input Power
100W

Surge Current
20kA, 8/20 μ s

Operating Frequency
DC / 2.5GHz

Tested as per MIL-STD-188-125-1/2

Military Grade Filters / Data Line Filter / Serial Port - EMP Surge Protector

RS 422 EMP Surge Protector



Operating Voltage
 \pm 3VDC peak signal voltage

Current Rating
100mA

Data Rate
12Mbps

Tested as per MIL-STD-188-125-1/2

Military Grade Filters / Data Line Filter / Ethernet Filter

RJ 45



Operating Voltage
 \pm 3VDC peak signal voltage between Wire Pairs 1-2, 3-6, 4-5 and 7-8.

Current Rating
250mA

Data Rate
10/100/1000Mbps

Tested as per MIL-STD-188-125-1/2

Military Grade Filters / AC/DC Control Line HEMP Filter

HEMP-CLF (Single Pair)



Operating Voltage
± 48VDC / 32VAC

Current Rating
1A to 6A

Performance Indicator

Standard	High	Very High
	████████████████████	

Tested as per MIL-STD-188-125-1/2

HEMP-CLF (Multi Pair)



Operating Voltage
24VDC / 30VDC / 48VDC / 68VDC / 120VAC / 230VAC

Current Rating
1A to 6A

Performance Indicator

Standard	High	Very High
	████████████████████	

Tested as per MIL-STD-188-125-1/2

Military Grade Filters / Secondary Protector

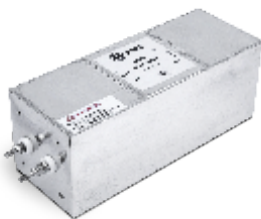


Lightning Connector with various terminations (BNC-BNC, TNC-TNC, BNC-TNC, N-BNC, N-TNC)

Surge Current
20kA, 8/20µs

Military Grade Filters / Tempest Filter

MF 710



Operating Voltage
250VAC

Current Rating
3A to 32A

Operating Frequency
50/60Hz

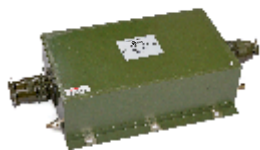
Mounting
Chassis Mounting

Performance Indicator

Standard	High	Very High
	████████████████████	



MF423-3-3D-M



Operating Voltage
440/520VAC

Current Rating
6A to 150A

Performance Indicator

Standard	High	Very High
	████████████████████	████████████████████



#237-A5, Bommasandra Industrial Area, Hosur Road, Bengaluru 560 099
Tel : 0091-80-2960 1335 / 2783 6838
Fax : 0091-80-2783 6880

www.emisindia.com