



# Automotive & Transit

Product Catalogue



# Index

## 01 EMI/EMC Products

Single Phase	Single Stage	03
	Dual Stage	03
	Chokes	04
	PCB Mount	04
DC Filter		04
Three Phase	Dual Stage	05
	Three Stage	06

## 02 Surge Protectors

Single Phase Surge Protector	08
Single Phase RC Filter	08
RC Network	08
Three Phase Surge Protector	08
Three Phase RC Filter	08

## 03 Power Quality Products

AC Three Phase Line Reactor	10
Three Phase Passive Harmonic Filter	10

---

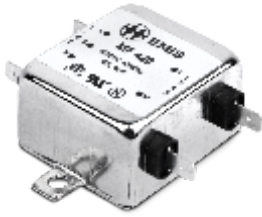
# 01 EMI/EMC Products

EMI can cause service interruption, data loss, permanent damage to equipment and failure when left unattended. Our sophisticated EMI/EMC products use high quality, grade A raw materials in an exhaustive range of specifications that meet customers' varied requirements.



## EMI Filters / Single Phase Filter / Single Stage

### MF 420-HP



**Operating Voltage**  
250VAC

**Current Rating**  
1A to 50A

**Operating Frequency**  
50/60Hz

**Mounting**  
Chassis Mounting

**Performance Indicator**

Standard	High	Very High
	████████████████████	



## EMI Filters / Single Phase Filter / Dual Stage

### MF 410



**Operating Voltage**  
250VAC

**Current Rating**  
1A to 100A

**Operating Frequency**  
50/60Hz

**Mounting**  
Chassis Mounting

**Performance Indicator**

Standard	High	Very High
████████████████████		



### MF 430



**Operating Voltage**  
250VAC

**Current Rating**  
1A to 60A

**Operating Frequency**  
50/60Hz

**Mounting**  
Chassis Mounting

**Performance Indicator**

Standard	High	Very High
████████████████████		



### MF 410-HP



**Operating Voltage**  
250VAC

**Current Rating**  
1A to 30A

**Operating Frequency**  
50/60Hz

**Mounting**  
Chassis Mounting

**Performance Indicator**

Standard	High	Very High
	████████████████████	



## EMI Filters / Single Phase Filter / PCB Mount

### PCB Filters – MF 530



**Operating Voltage**  
250VAC

**Current Rating**  
1A to 10A

**Operating Frequency**  
50/60Hz

**Mounting**  
PCB Mount

**Performance Indicator**

Standard	High	Very High
█		



## EMI Filters / Chokes

### Differential Mode Choke Coil (DMC)



**Operating Voltage**  
250VAC

**Current Rating**  
0.5A to 25A

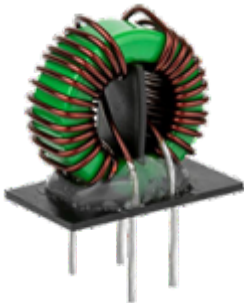
**Operating Frequency**  
50/60Hz

**Performance Indicator**

Standard	High	Very High
█		



### Common Mode Choke Coil (CMC)



**Operating Voltage**  
250VAC

**Current Rating**  
0.5A to 32A

**Operating Frequency**  
50/60Hz

**Performance Indicator**

Standard	High	Very High
█		



## EMI Filters / DC Filter

### MF 620



**Operating Voltage**  
up to 1500VDC

**Current Rating**  
150A to 1600A

**Operating Frequency**  
-

**Mounting**  
Chassis Mounting

**Performance Indicator**

Standard	High	Very High
█	█	



# EMI Filters / Three Phase Filter / Dual Stage

## MF 423-3-2D



**Operating Voltage**  
440/520VAC

**Current Rating**  
3A to 250A

**Operating Frequency**  
50/60Hz

**Mounting**  
Chassis Mounting

**Performance Indicator**

Standard	High	Very High
████████████████████		



## MF 423-3-2D-BS



**Operating Voltage**  
440/520VAC

**Current Rating**  
7A to 150A

**Operating Frequency**  
50/60Hz

**Mounting**  
Book Shelf

**Performance Indicator**

Standard	High	Very High
████████████████████		



## MF 423-4-2D



**Operating Voltage**  
440/520VAC

**Current Rating**  
6A to 250A

**Operating Frequency**  
50/60Hz

**Mounting**  
Chassis Mounting

**Performance Indicator**

Standard	High	Very High
████████████████████		



## MF 423-4-2D-BS



**Operating Voltage**  
440/520VAC

**Current Rating**  
7A to 150A

**Operating Frequency**  
50/60Hz

**Mounting**  
Book Shelf

**Performance Indicator**

Standard	High	Very High
████████████████████		





# EMI Filters / Three Phase Filter / Three Stage

## MF423-3-3D



**Operating Voltage**  
440/520VAC

**Current Rating**  
6A to 250A

**Operating Frequency**  
50/60Hz

**Mounting**  
Chassis Mounting

**Performance Indicator**

Standard	High	Very High
	████████████████████	



## MF 423-3-3D-BS



**Operating Voltage**  
440/520VAC

**Current Rating**  
7A to 150A

**Operating Frequency**  
50/60Hz

**Mounting**  
Book Shelf

**Performance Indicator**

Standard	High	Very High
	████████████████████	



## MF 423-4-3D



**Operating Voltage**  
440/520VAC

**Current Rating**  
6A to 250A

**Operating Frequency**  
50/60Hz

**Mounting**  
Chassis Mounting

**Performance Indicator**

Standard	High	Very High
	████████████████████	



## MF 423-4-3D-BS



**Operating Voltage**  
440/520VAC

**Current Rating**  
7A to 150A

**Operating Frequency**  
50/60Hz

**Mounting**  
Book Shelf

**Performance Indicator**

Standard	High	Very High
	████████████████████	



---

## 02 Surge Protectors

Lightning and power system faults can cause high voltage surges subsequently causing enormous damage to electrical equipment. Our surge suppression and spark quencher solutions handle short duration over-voltages and protect electrical equipment from damage.





## Surge Protectors / Single Phase Surge Protector

---



### S-SP

**Operating Voltage**  
250VAC

**Surge Rating**  
20kA & 40kA @ 8/20µS

## Surge Protectors / Single Phase RC Filter

---



### S-RCF

**Operating Voltage**  
250VAC

**Surge Rating**  
6.5kA @ 8/20µS

## Surge Protectors / RC Network / Single Phase

---



### RCN

**Operating Voltage**  
250VAC

## Surge Protectors / Three Phase Surge Protector

---



### T-SP

**Operating Voltage**  
440VAC

**Surge Rating**  
20kA & 40kA @ 8/20µS

## Surge Protectors / Three Phase RC Filter

---



### T-RCF

**Operating Voltage**  
440VAC

**Surge Rating**  
6.5kA @ 8/20µS

---

## 03 Power Quality Products

Power quality products provide uninterrupted power supply and manage Harmonics, maintaining consistent power quality. Our superior range of Line and Load Reactors and Harmonic filters ensure reliable and efficient quality power for industrial and home needs.



## Power Quality / AC Three Phase Line Reactor

---



### PQR

**Operating Voltage**  
400VAC

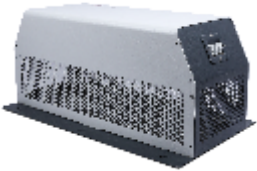
**Current Rating**  
2.4A to 1000A

**Operating Frequency**  
50Hz

**Impedance**  
2%, 3% and 4%

## Power Quality / Passive Harmonic Filter / Three Phase

---



### PQPH

**Operating Voltage**  
380-415VAC

**Current Rating**  
1.6A to 1000A

**Operating Frequency**  
50Hz

#237-A5, Bommasandra Industrial Area, Hosur Road, Bengaluru 560 099  
Tel : 0091-80-2960 1335 / 2783 6838  
Fax : 0091-80-2783 6880

[www.emisindia.com](http://www.emisindia.com)