


DATASHEET

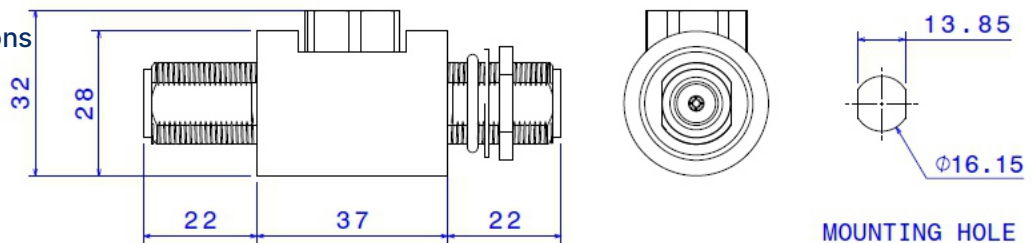
COAXIAL EMP SURGE PROTECTOR

Ordering Code Information

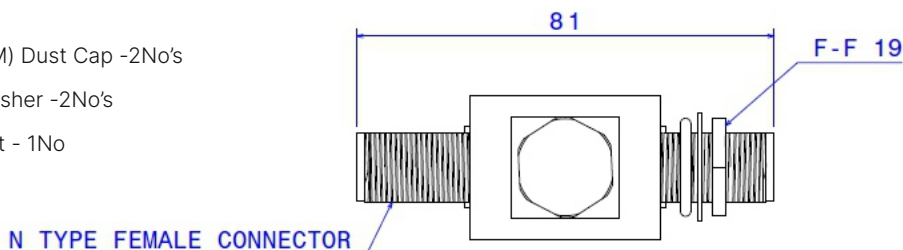
Model Number	Ordering code
EMISCOA200W	EMP200NCA025G

Technical Specifications

Frequency	DC-2.5GHz
Impedance	50Ω
Connector (Input & Output)	N(F)
Input Power	200 Watt
Insertion loss	≤0.5dB
Return loss	≥20 dB
Maximum Surge Current	18 kA, 8/20μs, Single Pulse
EMP Compliance	As per MIL STD 188-125-1 (Charge Line Method)
Enclosure/Finish	Brass/Plated
Weight	Approx.300g

Mechanical Dimensions

Accessories

1. N(M) Dust Cap -2No's
2. Washer -2No's
3. Nut - 1No



N TYPE FEMALE CONNECTOR