

## POWER QUALITY PRODUCTS

### INDUSTRIAL



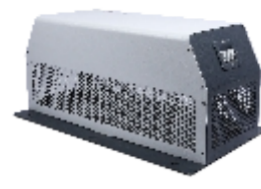
**SINGLE PHASE LINE REACTOR - PQR**  
230VAC | 2A to 1000A | 2% to 4% Impedance | 50Hz



**THREE PHASE LINE REACTOR - PQR**  
400VAC | 2A to 1000A | 2% to 4% Impedance | 50Hz



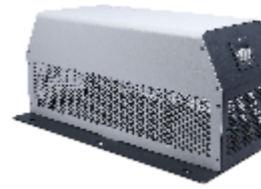
**THREE PHASE DV/DT REACTOR - PQR**  
400VAC | 4A to 1000A | 0.8% Impedance | 50Hz



**THREE PHASE PASSIVE HARMONIC FILTER - PQPH**  
380 to 415VAC | 1.6A to 1000A | 50Hz



**THREE PHASE DV/DT FILTER - PQDT**  
400VAC | 4A to 1100A | 50Hz



**THREE PHASE SINEWAVE FILTER - PQSW**  
400VAC | 2.3A to 1000A | 50Hz

## EMI/EMC Products

### IEC INLET

### INDUSTRIAL



**MF300**  
250VAC | 1A to 16A | 50/60Hz  
IEC Inlet Mounting

Standard	High	Very High
----------	------	-----------

UL, CE, RoHS



**MF310**  
250VAC | 1A to 10A | 50/60Hz  
IEC Inlet Mounting with Fuse

Standard	High	Very High
----------	------	-----------

UL, CE, RoHS



**MF310S**  
250VAC | 1A to 10A | 50/60Hz  
IEC Inlet Mounting with Switch

Standard	High	Very High
----------	------	-----------

UL, CE, RoHS



**MF320**  
250VAC | 1A to 10A | 50/60Hz  
IEC Inlet Mounting with Fuse and Switch

Standard	High	Very High
----------	------	-----------

UL, CE, RoHS



**MF320-2D**  
250VAC | 1A to 10A | 50/60Hz  
IEC Inlet Mounting with Fuse and Switch

Standard	High	Very High
----------	------	-----------

UL, CE, RoHS

### MEDICAL



**MF140**  
250VAC | 1A to 16A | 50/60Hz  
IEC Inlet Mounting

Standard	High	Very High
----------	------	-----------

UL, CE, RoHS



**MF150**  
250VAC | 1A to 10A | 50/60Hz  
IEC Inlet Mounting with Fuse

Standard	High	Very High
----------	------	-----------

UL, CE, RoHS



**MF160**  
250VAC | 1A to 10A | 50/60Hz  
IEC Inlet Mounting with Fuse and Switch

Standard	High	Very High
----------	------	-----------

UL, CE, RoHS

### SINGLE PHASE

### INDUSTRIAL



**MF420**  
250VAC | 1A to 125A | 50/60Hz  
Chassis Mount

Standard	High	Very High
----------	------	-----------

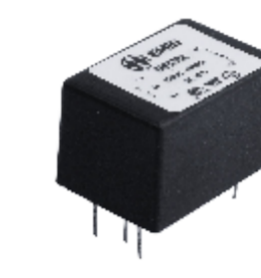
UL, CE, RoHS



**MF510**  
250VAC | 1A to 6A | 50/60Hz  
Clamp Mount

Standard	High	Very High
----------	------	-----------

UL, CE, RoHS



**MF530**  
250VAC | 1A to 10A | 50/60Hz  
PCB Mount

Standard	High	Very High
----------	------	-----------

UL, CE, RoHS



**MF210P**  
250VAC | 1A to 16A | 50/60Hz  
Cylindrical Filter

Standard	High	Very High
----------	------	-----------

UL, CE, RoHS



**MF430**  
250VAC | 1A to 60A | 50/60Hz  
Chassis Mount

Standard	High	Very High
----------	------	-----------

UL, CE, RoHS



**MF410**  
250VAC | 1A to 100A | 50/60Hz  
Chassis Mount

Standard	High	Very High
----------	------	-----------

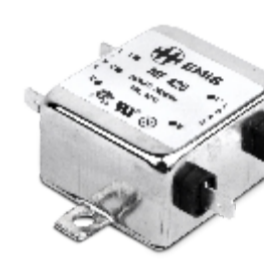
UL, CE, RoHS



**MF420VF**  
250VAC | 1A to 50A | 50/60Hz  
Chassis Mount

Standard	High	Very High
----------	------	-----------

UL, CE, RoHS



**MF420HP**  
250VAC | 1A to 50A | 50/60Hz  
Chassis Mount

Standard	High	Very High
----------	------	-----------

UL, CE, RoHS



**MF410HP**  
250VAC | 1A to 30A | 50/60Hz  
Chassis Mount

Standard	High	Very High
----------	------	-----------

UL, CE, RoHS

### MEDICAL



**MF120**  
250VAC | 1A to 125A | 50/60Hz  
Chassis Mount

Standard	High	Very High
----------	------	-----------

UL, CE, RoHS



**MF110**  
250VAC | 1A to 100A | 50/60Hz  
Chassis Mount

Standard	High	Very High
----------	------	-----------

UL, CE, RoHS



**MF130**  
250VAC | 1A to 60A | 50/60Hz  
Chassis Mount

Standard	High	Very High
----------	------	-----------

UL, CE, RoHS

### TWO PHASE

### INDUSTRIAL



**MF422**  
440VAC | 1A to 100A | 50/60Hz  
Chassis Mount

Standard	High	Very High
----------	------	-----------

UL, CE, RoHS

### THREE PHASE

### INDUSTRIAL



**MF 423-3W**  
440/520VAC | 1A to 150A | 50/60Hz  
Chassis Mount

Standard	High	Very High
----------	------	-----------

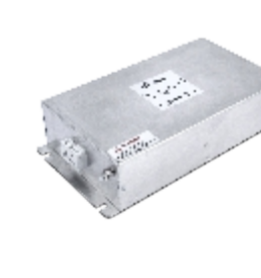
UL, CE, RoHS



**MF 423-4W**  
440/520VAC | 1A to 150A | 50/60Hz  
Chassis Mount

Standard	High	Very High
----------	------	-----------

UL, CE, RoHS



**MF 423-3-2D**  
440/520VAC | 3A to 250A | 50/60Hz  
Chassis Mount

Standard	High	Very High
----------	------	-----------

UL, CE, RoHS



**MF 423-4-2D**  
440/520VAC | 6A to 250A | 50/60Hz  
Chassis Mount

Standard	High	Very High
----------	------	-----------

UL, CE, RoHS



**MF 423-3-2D-BS**  
440/520VAC | 7A to 150A | 50/60Hz  
Book Shelf

Standard	High	Very High
----------	------	-----------

UL, CE, RoHS



**MF 423-4-2D-BS**  
440/520VAC | 7A to 150A | 50/60Hz  
Book Shelf

Standard	High	Very High
----------	------	-----------

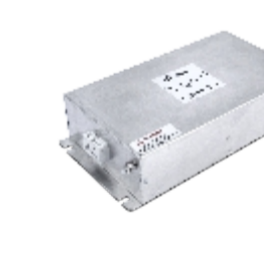
UL, CE, RoHS



**MF 423-3-3D-BB**  
440/520VAC | 300A to 1000A | 50/60Hz  
Chassis Mount

Standard	High	Very High
----------	------	-----------

UL, CE, RoHS



**MF 423-3-3D**  
440/520VAC | 6A to 250A | 50/60Hz  
Chassis Mount

Standard	High	Very High
----------	------	-----------

UL, CE, RoHS



**MF 423-4-3D**  
440/520VAC | 6A to 250A | 50/60Hz  
Chassis Mount

Standard	High	Very High
----------	------	-----------

UL, CE, RoHS



**MF 423-3-3D-BS**  
440/520VAC | 7A to 150A | 50/60Hz  
Book Shelf

Standard	High	Very High
----------	------	-----------

UL, CE, RoHS



**MF 423-4-3D-BS**  
440/520VAC | 7A to 150A | 50/60Hz  
Book Shelf

Standard	High	Very High
----------	------	-----------

UL, CE, RoHS



**MF 423-4-3DD**  
440/520VAC | 6A to 100A | 50/60Hz  
Chassis Mount

Standard	High	Very High
----------	------	-----------

UL, CE, RoHS



**MF 423-4-3DD-BS**  
440/520VAC | 7A to 150A | 50/60Hz  
Book Shelf

Standard	High	Very High
----------	------	-----------

UL, CE, RoHS

### CHOKES

### INDUSTRIAL



**DMC**  
250VAC | 0.5A to 25A | 50/60Hz

Standard	High	Very High
----------	------	-----------

UL, CE, RoHS



**CMC**  
250VAC | 0.5A to 32A | 50/60Hz

Standard	High	Very High
----------	------	-----------

UL, CE, RoHS

### DC FILTER

### INDUSTRIAL



**MF610**  
Up to 1200VDC | 25A to 2500A  
Chassis Mount

Standard	High	Very High
----------	------	-----------

UL, CE, RoHS

## FEEDTHROUGH COMPONENTS

### INDUSTRIAL



**FTFDC**  
130VDC | 10A to 200A @ 60°C

Standard	High	Very High
----------	------	-----------

UL, RoHS



**FTCDC**  
130VDC | 6A to 300A @ 60°C

Standard	High	Very High
----------	------	-----------

UL, RoHS



**FTFAC**  
250VAC | 10A to 200A @ 60°C | 50/60Hz

Standard	High	Very High
----------	------	-----------

UL, RoHS



**FTCAC**  
250VAC | 6A to 300A @ 60°C

Standard	High	Very High
----------	------	-----------

UL, RoHS

## SURGE PROTECTORS

### INDUSTRIAL



**SINGLE PHASE SURGE SUPPRESSOR - S-SP**  
250VAC  
Surge current: 20kA, 40kA @ 8/20µs



**THREE PHASE SURGE SUPPRESSOR - T-SP**  
440VAC  
Surge current: 20kA, 40kA @ 8/20µs



**SINGLE PHASE RC FILTER - S-RCF**  
230VAC  
Surge current: 6.5kA @ 8/20µs



**THREE PHASE RC FILTER - T-RCF**  
440VAC  
Surge current: 6.5kA @ 8/20µs