
DATASHEET

DC EMI FILTER FOR PHOTO VOLTAIC INVERTERS

Description

Filter with additional differential mode rejection in low frequency. For use with switched mode power supplies to reduce noise from power supply back into the mains. Filter also provides good attenuation of incoming interference

Technical Specifications

Maximum Continuous Operating Voltage	1200 VDC Max
Current ratings	25A to 2500A @ 55°C
High Potential test voltage	+ , - to PE 3600VDC for 2 sec + to - 3000VDC for 2 sec
Overload Capability	135% of Rated current for 15 minutes
Design Corresponding to	UL1283, CSA 22.2 No.8-13 and IEC 60939
Flammability corresponding to	UL 94 V-0
Temperature range	-25°C to +100°C
Climatic Category	40/100/21

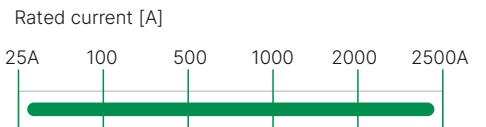
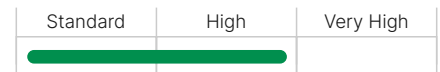
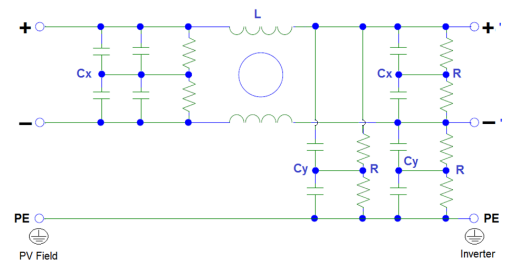
Compliance

Features


- Double stage filter
- Low leakage version available
- High conducted attenuation performance
- Superior Performance
- Chassis mounting

Applications

- PV Inverters
- UPS
- DC Motor Drives
- DC Quick Chargers
- Energy / Battery storage systems
- DC Charger Installations

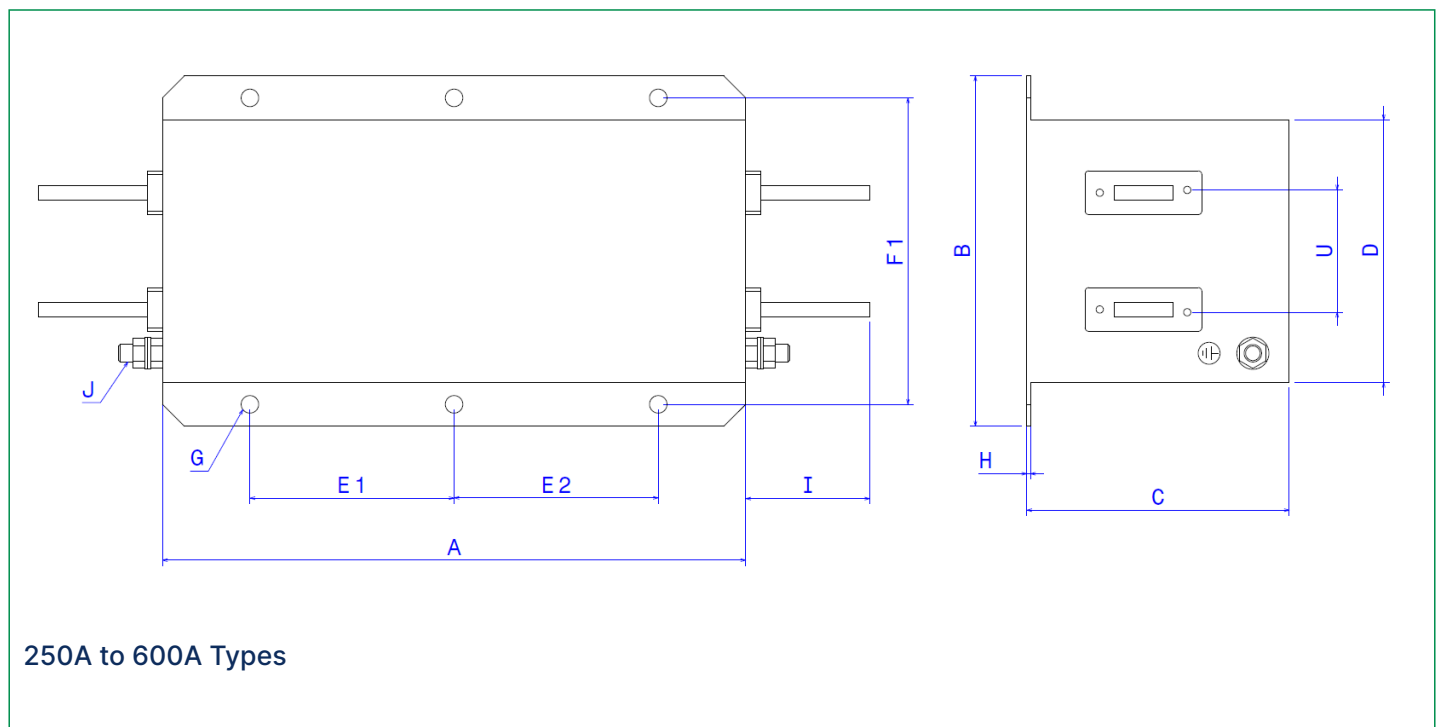
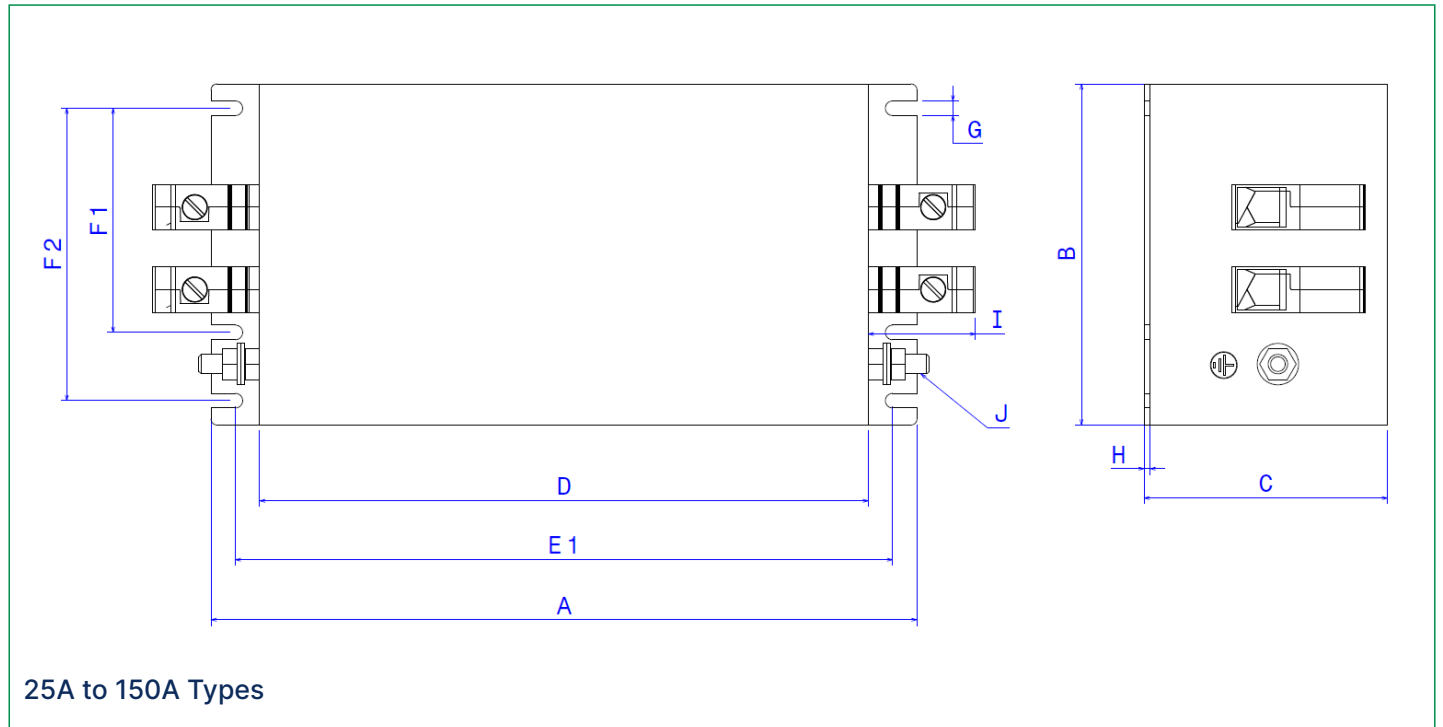
Performance Indicator

Typical circuit Diagram


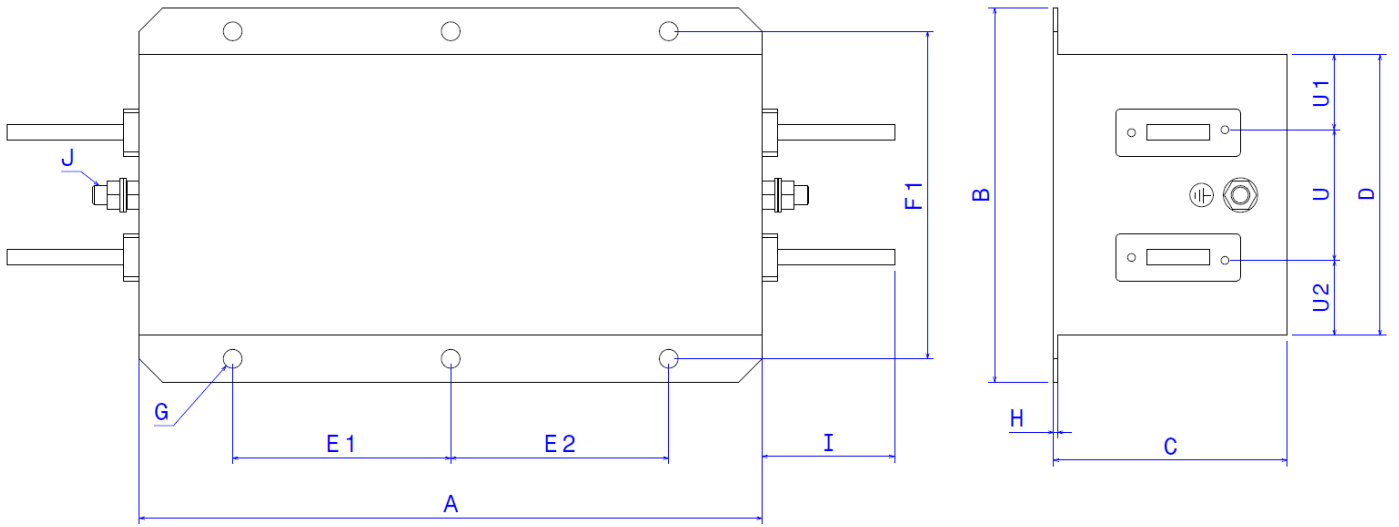
Ordering Code Information

Part Number	Ordering Code	Rated Current @55°C	Input / Output Connections		Max. Weight (Kilo Grams)
					
MF610S-25	E101732-1	25A	16		1.2
MF610S-50	E103382-1	50A	35		1.8
MF610S-75	E104946-1	75A	35		2
MF610S-100	E104947-1	100A	50		3
MF610S-150	E104948-1	150A	95		5
MF610S-250	E103346-1	250A		BB	5.2
MF610S-400	E104949-1	400A		BB	6.5
MF610S-600	E104950-1	600A		BB	7
MF610S-800	E104951-1	800A		BB	9.5
MF610S-1000	E104952-1	1000A		BB	9.8
MF610S-1500	E101553-1	1500A		BB	17
MF610S-2500	E104953-1	2500A		BB	28
MF610SL-25	E104954-1	25A	16		1.2
MF610SL-50	E104955-1	50A	35		1.8
MF610SL-75	E104956-1	75A	35		2
MF610SL-100	E104957-1	100A	50		3
MF610SL-150	E104958-1	150A	95		5
MF610SL-250	E104959-1	250A		BB	5.2
MF610SL-400	E104960-1	400A		BB	6.5
MF610SL-600	E104961-1	600A		BB	7
MF610SL-800	E104962-1	800A		BB	9.5
MF610SL-1000	E104963-1	1000A		BB	9.8
MF610SL-1500	E104964-1	1500A		BB	17
MF610SL – 2500	E104965-1	2500A		BB	28

Note: *L – Low leakage type without Y capacitors versions

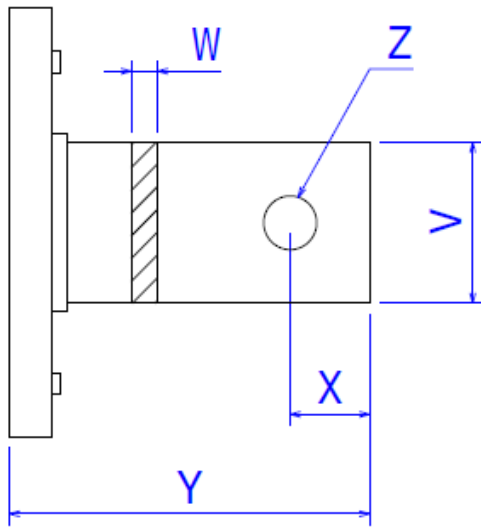
Mechanical Drawing



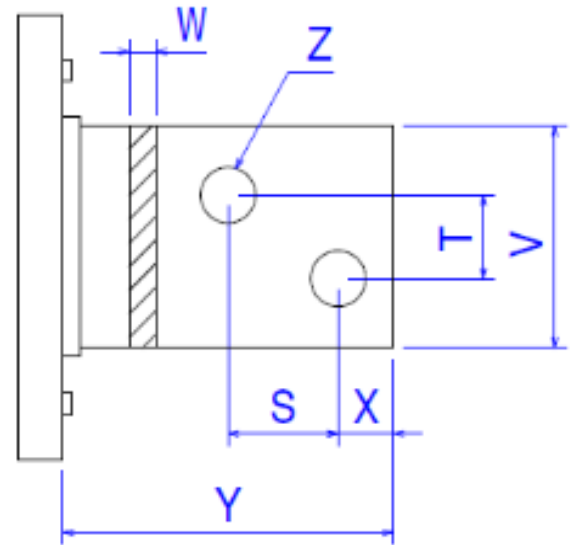


800A to 2500A Types

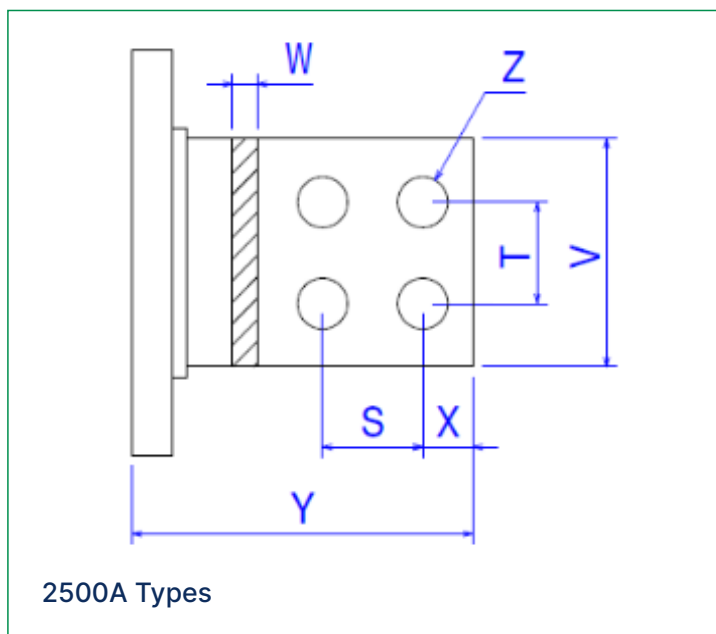
Bus bar Details



250A to 1000A Types



1500A Types




Note: All dimensions in mm; Tolerances according: ISO2768-m

Dimensions

	25A	50A	75A	100A	150A	250A	400A	600A	800A	1000A	1500A	2500A
A	170	200	200	220	250	300	300	300	300	300	300	400
B	80	95	95	125	140	180	190	190	200	200	200	250
C	65	80	80	95	115	110	110	110	140	140	150	180
D	140	170	170	190	220	130	140	140	150	150	150	195
E1	152.5	182.5	182.5	202.5	232.5	130	130	130	130	130	130	190
E2						110	110	110	110	110	110	150
F1	45	60	60	80	100	155	165	165	175	175	175	225
F2	60	75	75	100	120							
G	5.5	5.5	5.5	5.5	5.5	Ø12	Ø12	Ø12	Ø12	Ø12	Ø12	Ø12
H	1	1.5	1.5	1.5	2	2	2	2	3	3	3	3
I	25	39	39	45	51	58	58	58	65	65	110	100
J	M5	M6	M6	M8	M10	M10	M10	M10	M12	M12	M12	M16
S											43	35
T											26	35
U						70	70	70	70	70	70	100
U1									45	45	45	61
U2									35	35	35	34
V						20	25	25	40	40	60	70
W						5	6	8	8	8	10	15
X						15	15	15	20	20	17	20
Y						58	58	58	65	65	110	100
Z						Ø9	Ø10.5	Ø10.5	Ø14	Ø14	Ø14	Ø14

Connector Cross Sections

	16	35	50	95
Solid Wire	16mm ²	35mm ²	50mm ²	95mm ²
Flex wire	10mm ²	25mm ²	50mm ²	95mm ²
AWG type wire	AWG 6	AWG 2	AWG 1/0	AWG 4/0
Recommended torque	1.5-1.8 NM	4.0-4.5 NM	7-8 NM	17-20 NM

Typical Insertion Loss

Frequency (MHz)	0.15	0.5	1	10	30
Common Mode in dB	65	75	55	45	40
Differential Mode in dB	65	70	50	35	30