
DATASHEET

HIGH CURRENT DC EMI/RFI FILTER – MF620

Description

These series range of EMI/RFI filters are designed to suppress undesirable electrical disturbances in Power lines for EV DC fast charging. Fulfill the requirements in IEC/EN 61851-23 Electric vehicle conductive charging system & UL 2202.

Technical Specifications

Maximum Continuous Operating Voltage	500VDC /1000VDC /1500VDC
Operating Frequency	DC
Rated Current	150A to 1600A @55°C
High Potential test voltage	
500VDC	DC +,-> DC 2000 VDC for 2 Sec DC +,- to E > DC 2500 VDC for 2 Sec
1000VDC	DC +,-> DC 3600 VDC for 2 Sec DC +,- to E > DC 6000 VDC for 2 Sec
1600VDC	DC +,-> DC 3600 VDC for 2 Sec DC +,- to E > DC 6000 VDC for 2 Sec
Overload Capability	135% of Rated current for 15minutes
Design Corresponding to	UL60939-3, CSA 22.2 No.8-13 and IEC 60939
Flammability corresponding to	UL 94 V-0 or better
Temperature range	-40°C to +100°C
Climatic Category	40/100/21

Compliance

Features

Rated current up to 1600A

High voltage filters

Three voltage levels (500V, 1000V, 1600V)

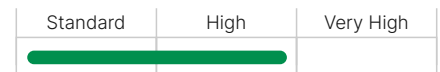
Compact - Space saving-Nickel plated Busbar.

Applications

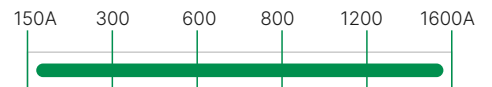
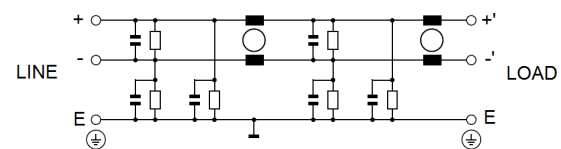
EV DC Fast charger

Industrial charger

UPS/Inverters

Performance Indicator


Rated current [A]

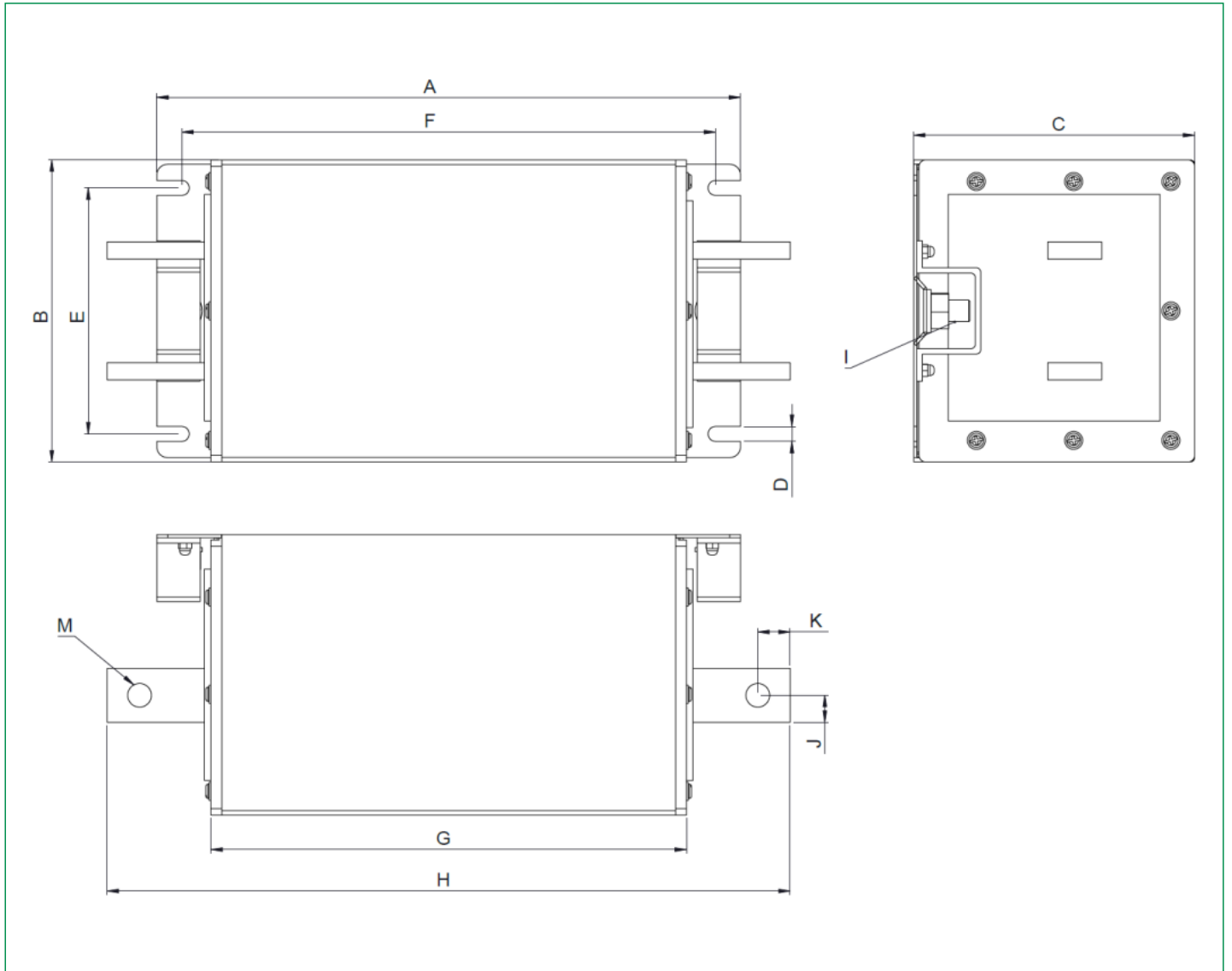

Typical circuit Diagram


Ordering Code Information

Part Number (500VDC)	Part Number (1000VDC)	Part Number (1500VDC)	Rated Current @55°C	Total Capacitance to E (nF)	Termination
MF620-150AX	MF620-150BX	MF620-150CX	150A	0	25x3
MF620-150AA	MF620-150BA	MF620-150CA	150A	100	
MF620-150AB	MF620-150BB	MF620-150CB	150A	1000	
MF620-150AC	MF620-150BC	MF620-150CC	150A	2000	
MF620-300AX	MF620-300BX	MF620-300CX	300A	0	25x5
MF620-300AA	MF620-300BA	MF620-300CA	300A	100	
MF620-300AB	MF620-300BB	MF620-300CB	300A	1000	
MF620-300AC	MF620-300BC	MF620-300CC	300A	2000	
MF620-450AX	MF620-450BX	MF620-450CX	450A	0	25x10
MF620-450AA	MF620-450BA	MF620-450CA	450A	100	
MF620-450AB	MF620-450BB	MF620-450CB	450A	1000	
MF620-450AC	MF620-450BC	MF620-450CC	450A	2000	
MF620-600AX	MF620-600BX	MF620-600CX	600A	0	25x12
MF620-600AA	MF620-600BA	MF620-600CA	600A	100	
MF620-600AB	MF620-600BB	MF620-600CB	600A	1000	
MF620-600AC	MF620-600BC	MF620-600CC	600A	2000	
MF620-1000AX	MF620-1000BX	MF620-1000CX	1000A	0	40x12
MF620-1000AA	MF620-1000BA	MF620-1000CA	1000A	100	
MF620-1000AB	MF620-1000BB	MF620-1000CB	1000A	1000	
MF620-1000AC	MF620-1000BC	MF620-1000CC	1000A	2000	
MF620-1600AX	MF620-1600BX	MF620-1600CX	1600A	0	60x12
MF620-1600AA	MF620-1600BA	MF620-1600CA	1600A	100	
MF620-1600AB	MF620-1600BB	MF620-1600BB	1600A	1000	
MF620-1600AC	MF620-1600BC	MF620-1600CC	1600A	2000	

Note: Customized filters are provided on request.
Protective cover will be provided along with filter.

Dimensions [mm]



Current Rating	A	B	C	D	E	F	G	H	I	J	K	M
150A	200	122	128	7	95	187	145	245	M10	12.5	15	9
300A	200	122	128	7	95	187	145	245	M10	12.5	15	11
450A	200	122	128	7	95	187	150	250	M10	12.5	15	11
600A	200	122	128	7	95	187	150	250	M10	12.5	15	11
1000A	250	140	150	7	114	227	200	300	M10	20	15	11
1600A	270	140	150	7	114	247	220	320	M10	30	15	11(2)