

Single Phase EMI Filter – MF300 IEC Inlet Type

Description

These series range of filters with IEC Inlet are designed to suppress undesirable electrical disturbances in Power Lines. They limit the amplitude of interfering voltages on AC power lines and prevent them from propagating into or out of the filtered equipment.

Features

- Rated Current up to 16A
- Medical Version available
- High Conducted attenuation performance
- Excellent performance/size ratio

Applications

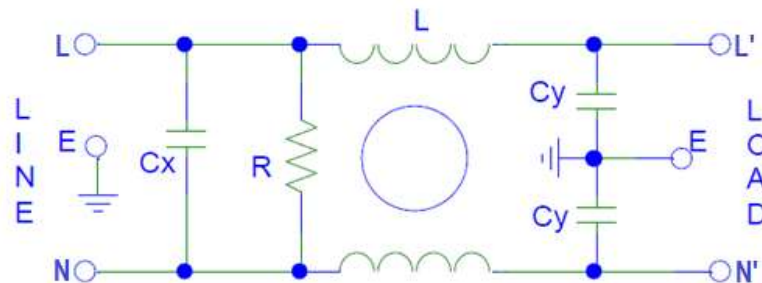
- Power Systems
- Electronic Equipment
- Frequency convertors
- Stepper motor drives
- UPS/Inverters



Approvals & Compliance



Typical circuit Diagram



Technical Specifications

Maximum Continuous Operating Voltage	: 250VAC
Operating Frequency	: 50/60Hz
Current ratings	: 1A to 16A @40°C
High Potential test voltage	: L to G 2250VDC for 1 Minute L to L 1450VDC for 1 Minute
Overload Capability	: 135% of Rated current for 15 minutes
Design Corresponding to	: UL1283, CSA 22.2 No.8-13 and IEC 60939
Flammability corresponding to	: UL 94 V-0
Temperature range	: -25°C to +85°C
Climatic Category	: 25/85/21
Enclosure Material	: Aluminium

Images shown above are just for reference

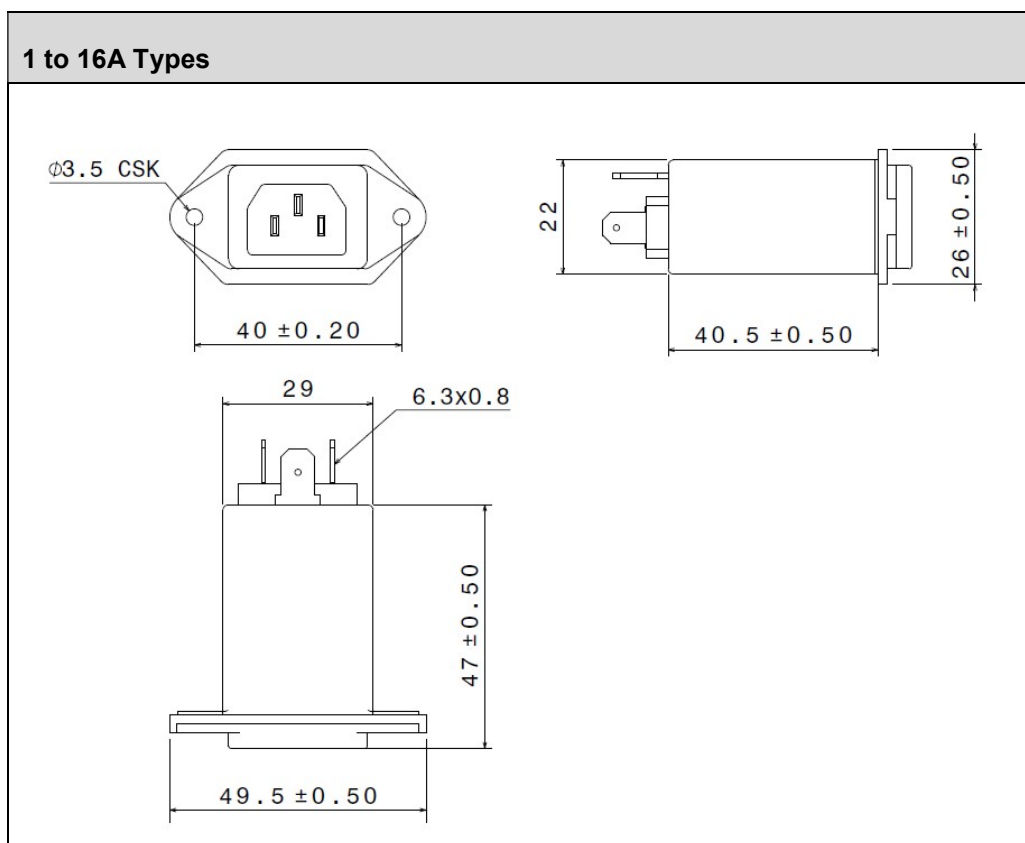
Selection Table

Part Number	Ordering Code	Rated Current @40°C	Leakage Current @250VAC (mA)	Termination	Weight (Grams)
MF300 - 01	S300000001S	1A	0.34	Fastons - 6.3x0.8	60
MF300 - 02	S300000002S	2A*	0.34	Fastons - 6.3x0.8	60
MF300 - 03	S300000003S	3A	0.34	Fastons - 6.3x0.8	60
MF300 - 06	S300000006S	6A	0.34	Fastons - 6.3x0.8	60
MF300 - 10	S300000010S	10A	0.34	Fastons - 6.3x0.8	60
MF300 - 15	S300000015S	15A	0.34	Fastons - 6.3x0.8	60
MF300 - 16	S300000016S	16A**	0.34	Fastons - 6.3x0.8	60

Note: * not covered under NEMKO; ** not covered under CSA

Customized filters are provided on request.

Mechanical Drawing



All dimensions in mm; Tolerances according to ISO2768-m

Insertion Loss – (Common Mode)

